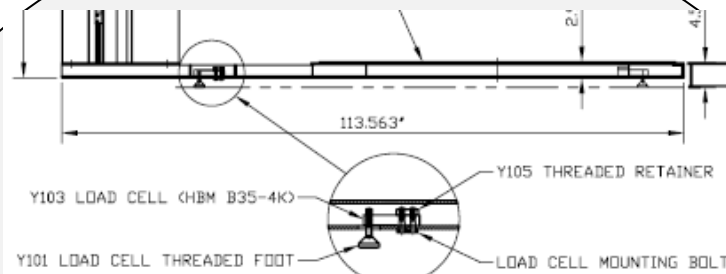


AVAILABLE OPTIONS



All our machines and systems can be equipped with either a platform scale or a load cell package

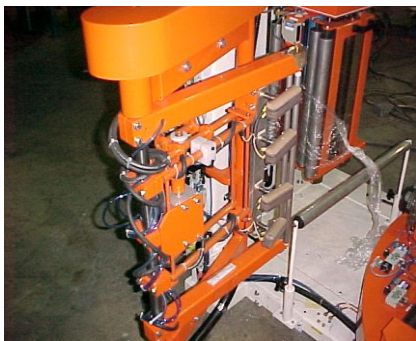


Top platens help stabilize the load during the wrap cycle

A roping device provides additional load containment and can be used to lock the load to the pallet. Cousins offers both manual or fully automatic versions.



Heat seals "weld" the film tail to prevent unraveling.



We can add gravity or powered conveyors to all our models.



- ❖ Affordable and simple machines with more standard features than any other pallet wrapper in this price range
- ❖ A quality machine built with quality components and supported by a local qualified distributor

We invite you to go on line at
www.cousinpackaging.com
 For more information or call your local distributor

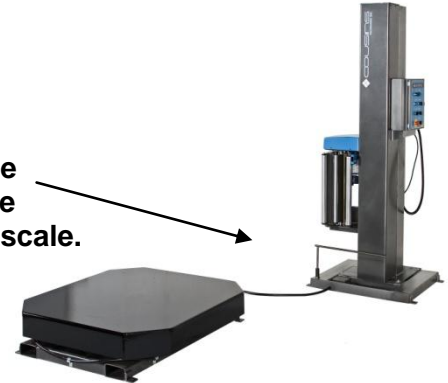
1-888-209-4344

Ask About The Patented A-Arm Full Automation Technology Only Available From Cousins Packaging



We can retrofit a new Super Rapid Thread II powered pre-stretch film carriage to most Cousins and competitive machines.

The split base on high profile turntable models can be used to wrap very large loads or to accommodate an existing scale.



ADDITIONAL STANDARD OPTIONS

Auto Film Start Option is designed for applications where the fork-lift truck driver is also the stretch wrap machine operator, and it is desirable to reduce the number of times that the lift truck operator has to get off the fork-lift truck. This option is designed as a superior solution to the Auto Film Cut feature offered on some competitor's equipment and can be installed on most semi-automatic stretch wrap machines.

Base Extensions are needed when load sizes are larger than the standard machine can accommodate.

Ramps are needed if the machine is to be loaded with a manual pallet jack or powered walkie.

Porches or ramp extensions are needed for pallet jacks with longer than normal forks or powered walkies.

Tower Extension is needed when the load height is higher than the standard machine can accommodate.

Heavier Turntable Capacity options are needed when the load weight is heavier than the standard weight capacity,

Dusty option is needed in dusty or dirty environments.

Cold Weather Package is needed when the machine is operating in a cold environment (down to 32° F).

Freezer Package is needed when the machine is operating in a freezer (32° to -20° F).

Wet/Moisture Environment Package is needed for a wet environment. Not applicable for complete washdown.
NOTE: A complete machine washdown package requires a factory quote.

30" Super Rapid Thread II Film Carriage option is needed when the customer wants to use 30" wide film rolls.

Platform Scale or Load Cell options can be integrated into all our models for "wrap & Weigh".

PLUS

WE CAN DESIGN AN OPTION FOR YOUR SPECIAL REQUIREMENT.