



Q3 2025 IN THIS ISSUE:

Messages from Chapter
President & Regent
PAGES 1 - 2

Welcome New Members
PAGES 3

New Fellows
PAGE 4

Event Highlights &
Snapshots
PAGE 5-8

Upcoming Events
PAGE 9

Member Feature
PAGE 10-11

Get Involved
PAGE 12-14

Sponsors & Social Media
PAGES 15-17

Message from the ACHE MN President

DAVID VOLLER, FACHE | PRESIDENT

Members,

Wow! Hard to believe it is already September... Boats are getting pulled, kids have gone back to school and gardens will soon be readied for winter. Oh, and Pumpkin Spice is the crave again for many.

To date, I know for certain that ACHE MN has been extremely busy with many educational offerings both in person and virtual. We have offered a number of networking events and the board remains busy running things behind the scenes. Thank you to everyone who has joined us for these offerings and especially to all who help bring things together!

But wait, there is more... Hopefully some of you will have joined our friends with MHA in Brainerd, attend the gathering with ACHE and HLA for the student event on October 14 and registration is open for our Annual Conference on November 11th. As always, we have an excellent lineup of speaker panels and topics. All of our event details are on our web page where you can register as well.

As always, a huge thank you to all of you for being members of our organization! Healthcare leadership is tough but extremely rewarding. Each of you work tirelessly to prove this, for which your staff and colleagues are grateful. Hopefully you have been inspired by being a member and can continue to promote others to be a member as well. Imagine, if each one of us (almost 700) recruited just one person to join us this year... Wow!

With kindness,
David

David J. Voller, MBA, FACHE
President, ACHE MN





Message From Your ACHE MN Regent

DAVID WALZ, RN, FACHE | REGENT FOR MINNESOTA

Hello ACHE-MN

I have exciting news on the personal side; I became a grandpa. My wife, Dena and I are proud to have Tatum Gray, born August 28th, 2025, in our lives. Congrats to our daughter Baily, an ACHE member, and her husband Ben!

Please take a moment to review ACHE’s 2024–2025 [Annual Report](#). You can access the annual letter from ACHE leadership, the financial statement, committee roster listings, award winners and much more. With our [2024–2025 Annual Report](#) which is documenting our progress from the past year and reflecting on how our community of leaders is transcending the ordinary and shaping the future of healthcare.

You can also share your thoughts with leadership by [sending us your ideas](#) for an upcoming Healthcare Executive article or a timely topic for a webinar. Healthcare leaders who have current, actionable knowledge and experience can share their content with the ACHE community by writing an article for Healthcare Executive or presenting a webinar.

Upcoming National Events & Opportunities:

[Orlando Cluster](#) | Monday, Dec. 15–Wednesday, Dec. 17 | Renaissance Orlando Resort
Earn up to 24 ACHE In-Person Education credits

[San Diego Cluster](#) | Monday, Feb. 9–Tuesday, Feb. 10 | Hilton San Diego Bayfront
Earn up to 12 ACHE In-Person Education credits

Virtual Interactive Course | Begins Tuesday, Sept. 2 | [Workplace Transformation: How to Promote Clinician Wellness and Create a Roadmap for Organizational Change](#)
Earn 3 ACHE Virtual Interactive Education credits

Examine the impact of burnout internally and develop a roadmap toward building the necessary strategies to prioritize and support clinician wellness. [View All Virtual Interactive Courses](#)

I thank you for your support and the opportunity to serve and represent our Chapter/State.

Warmest regards,

Dave

David F. Walz
Regent for Minnesota
CEO Madelia Health





WELCOME NEW MEMBERS

Welcome to our 29 new members and 10 transfer members! We are thrilled you have decided to join the Minnesota Chapter of ACHE in our commitment to healthcare leadership excellence. We're here to help you achieve your personal best while making healthcare safer, more accessible, and affordable to all.

NAME	ROLE	ORGANIZATION
Todd Anderson, MAOL		
Joseph Aziz		JA PLLC
Sam Barney	Administrator	Essentia Health
Clayton Barr		Rainy Lake Medical Center
Kelly Blair, MPA		
Benoit Blondeau, MD, MBA		Health Partners
Adam Brown		
Patricia Burg-Carver		
Tamara Bush		Mayo Clinic
Molly Clark, PharmD, MHA		
Amina K. Dada, MHSA*		
Boluwatife Gbadebo*		
Tanner Goodrich*		
Ammar Hashemi		
Matt Krause, MBA*		Cuyuna Regional Medical Center
Grace Mages		
Isaac Marquardt*		
Ross A. Matlack, III, FACHE*		
Clara Matson*		
Robert D. McBane, III	Lead Desk Operations Specialist	Mayo Clinic
Alexander Mogren	Patient Care Coordinator	Park Dental
Amy S. Ninham	Chief Financial Officer	Mille Lacs Health System
Kiza Olson		
Steven Palmer, PA-C		
Tess Pridal		
Kimberley L. Radtke, PhD	Assistant Professor; Undergraduate Program Director	Winona State University
Abdikhaliq Sahal	Quality Improvement Specialist	UCare
Kristen Schreiner		
Jeffon L. Seely	COO	United Hospital District
Gurjot Singh		
Kristine Swan		
Erez Talshahar, MHA, PMP, LSSMBB		
Claudia Thomas		
Krista Thomas, MBA, BA		
Francia Togba*		
Christie Traczyk		Allina Health
Dennis W. Walker, FACHE*		
Oliver Zaugg*		

* Transfer to MN Chapter

New members 7/1/25 thru 9/30/25



NEW FELLOWS

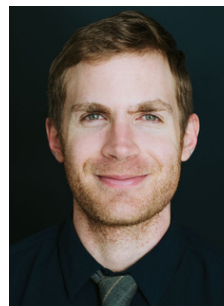
WHAT IS FACHE?

The FACHE credential is the gold standard for board certification in health management. According to ACHE, healthcare leaders who obtain the FACHE credential signify their competency, commitment to service, and recognition as an esteemed leader.

CONGRATS!



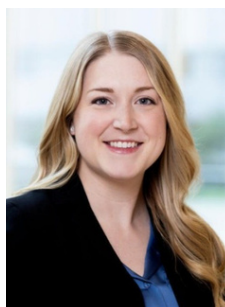
**Jennifer Grob,
FACHE**



**Samuel Popham,
FACHE**



**Michael Johnston,
DM, FACHE**



**Lindsey Asher,
DHA, FACHE**



**Theresa Morton,
MPH, FACHE**

FACHE

Fellow of the American College of Healthcare Executives
The Distinction of Board Certification

Event Highlight

CREATING CONNECTIONS - ACHE MN NETWORKING

September 10, 2025 | Concordia College, Moorhead, MN

The Concordia College - Moorhead hosted a successful "Creating Connections: ACHE MN Networking" event, welcoming twenty attendees including students, healthcare leaders, and ACHE members. School of Health Professions Dean, Gwen Halaas, opened the event, followed by a warm welcome from Shannon Pitre, Administrative Fellow. The spirited program featuring an introduction to ACHE and structured networking activities to foster connections among students, healthcare leaders, and ACHE members was facilitated by Jen Moebius. The interactive format encouraged rich discussion, with Brenda Schleske, FACHE, sharing her experience and other attendees sharing career wisdom from past ACHE Congress events. These insights were then shared with the entire group, creating a dynamic learning environment. We hope to collaborate with Concordia College - Moorhead again on future events.



Event Highlight

2025 Minnesota Hospital Association Annual Meeting Building the Hospital of Tomorrow and The Role of Data and Advanced Analytics in Transforming Health Care

September 17, 2025 | Madden's On Gull Lake, Brainerd, MN

The Minnesota Hospital Association's 2025 Annual Meeting kicked off with an ACHE MN panel discussions led by hospital leaders from across the state. Attendees heard from Lisa Bjerga (CEO, Lakewood Health System), Dr. David Ingham (VP, Allina Health), Brandi Lunneborg (President, Lakeview Hospital), and moderator Ben Nielsen (COO, Ridgeview) on building the hospital of tomorrow. Their panel was followed by Dr. Cathy Cantor (Chief Medical Officer, Essentia Health), Dr. Susan Pleasants (SVP, Fairview Health Services) Rachelle Schultz (CEO, Winona Health), and moderator Amy Hart's (CEO, Cuyuna Regional Medical Center) discussion on the role of data and analytics in transforming health care.



Event Highlight

Congratulations to the 2025 Minnesota ACHE and Minnesota Hospital Foundation scholarship winners, aimed to help health care professionals complete their graduate education. From left: Minnesota Hospital Association CEO Rahul Koranne, American College of Healthcare Executives Minnesota chapter past president Nick Nehman and David Walz congratulated Shannon Pitre, Nate Meyer, Haley Cichos and Rob Davenport. (Not pictured: scholarship winner Madeline Warner).



Rob Davenport (CSS MHA '26); Nate Meyer (CSS MHA '25); Dr. Sue McClernon (CSS MHA Program Director); Shannon Pitre (CSS MHA '25)

LouAnn Olson (MHA) announces winners!

Event Highlight

ACHE MN Journal Club

September 19, 2025 | Virtual Event

Article Topic: Leadership in a Remote Environment

ACHE MN's September Journal Club brought together healthcare leaders for a thoughtful discussion on the challenges and opportunities of leading in today's hybrid workplace. Participants explored how leadership must adapt to support distributed teams, emphasizing the importance of trust, intentional communication, and flexibility.

The conversation highlighted practical strategies such as:

- Establishing consistent routines to prevent burnout.
- Using tools like Teams for quick check-ins and informal connection.
- Creating inclusive environments where remote voices are heard and valued.

The discussion also offered guidance on building high-performing virtual teams and fostering a culture of appreciation and responsiveness. Attendees left with actionable takeaways and a renewed sense of purpose in navigating the hybrid landscape. The event reinforced that while the way we work continues to evolve, strong leadership and intentional connection remain at the heart of successful teams.

Professional Networking Event

September 25, 2025 | Tap House, Rochester, MN

We had ~30 individuals in attendance for the professional networking event at the Tap House in Rochester in September! This event was a great opportunity for current ACHE members to connect and for those interested in ACHE membership to learn more about the benefits of joining ACHE-MN. Light appetizers were served and the event was sponsored by the ACHE-MN Southern Local Program Council (SLPC). Thanks to all who joined and hosted!

Interested in becoming a member?

[CLICK HERE FOR
MEMBERSHIP INFO](#)



Event Snapshot



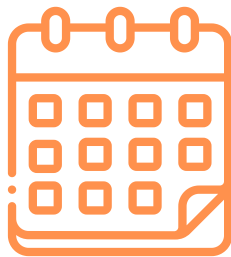
ACHE-MN JOURNAL CLUB

July 18, 2025 | Virtual Event

Article Topic: Languages of Appreciation in the Workplace
Thank you to all those who attended virtually!



UPCOMING EVENTS *Save the Date!*

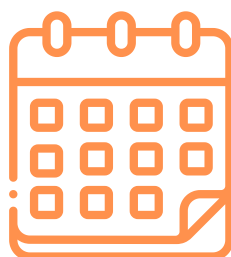


DIGITAL HEALTH IN THE HEALTHCARE DELIVERY SYSTEM

When: Friday, October 10, 2025

Where: Virtual Event

How do I register: [Click here!](#)

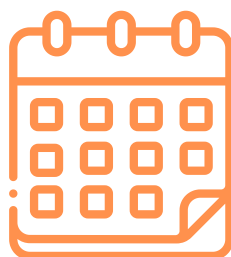


HLA MN & ACHE MN STUDENT NETWORKING

When: Tuesday, October 14, 2025

Where: University of MN-Twin Cities, Coffman Union, Campus Club

How do I register: [Click here!](#)



ACHE MN ANNUAL CONFERENCE

When: November 11, 2025

Where: Allina Commons in Minneapolis

How do I register: [Click here!](#)

Join Us!

ACHE MN 2025 ANNUAL CONFERENCE

Reimagining Healthcare Together: The Crossroads of Technology, Talent, and Trust

November 11, 2025 8:00am-4:30pm | Allina Commons, Minneapolis

Keynote	Disruptive Innovation in Healthcare Delivery		Responding to a Dynamic Governmental Landscape		Maintaining & Regaining Trust in the Age of Cyber Threats	
 Hannah Ubi Co-Founder Good Company Consulting	 Jennifer Olson BlueInno Advisors, LLC	 David Vidal Mayo Clinic	 Dr. Jakub Tolar University of Minnesota	 Santo Cruz CentraCare Health	 Stig Ravdal Ravdal Consulting	 Steven Kellerhals Arctic Wolf
	 Thompson Aderinkomi Nice Healthcare	 Dr. Sameer Badlani M Health Fairview	 Kerri Gordon Allina Health	 Bob Hume Minnesota Hospital Association	 Melissa Fors Shackelford Shackelford Strategies	

Gold Sponsors

ACHE OF MINNESOTA American College of Healthcare Executives
Children's MINNESOTA Mortenson construction MedCraft Healthcare Real Estate Wold ARCHITECTS & ENGINEERS Salix GSK

Premier Sponsors



We connected with member Charles Henderson to learn about his role as a Program Analyst, his journey to healthcare administration, and why he is an ACHE MN member.



Charles Henderson

Program Analyst
Veteran Health Administration

BACKGROUND:

Q: Tell us about your current role and what it entails:

A: I am currently the program analyst and lead for patient generated health data (PGHD). PGHD is health-related data created, recorded, or gathered by or for patients (or family members or other caregivers) to promote health and wellness or to help address health concerns. My role involves strategizing and implementing innovative solutions to leverage health-related data created by or for patients in order to promote health and wellness. For instance, I successfully led a project that improved enhancing the way Veterans share data from keeping a journal to utilizing an app to provide their data and allowing the clinical staff to view it in a dashboard whenever they found that information to be relevant to the Veteran's care.

Q: Tell us about your journey into healthcare administration.

A: I was an Air Force Veteran that worked in medical logistics in 2008. From there, I knew that I wanted to be in healthcare administration. I started my journey by going back to school. I deployed to Iraq in 2010 and was injured, unfortunately this led to a medical discharge from the military in 2012. Following, I moved to Pine Ridge reservation with my wife and began working for the VA as a medical support assistant. I activated my GI Bill immediately to finish my bachelor's and master's degree in health care administration. From there I continued to work hard, learn, and pursue ways to improve health care. Ultimately, I was able to lead several projects at the medical center, regional, and national level to improve care for Veterans around the world and I am still doing this every day.

Q. What prompted you to pursue a career in healthcare?

A: It was my exposure in the military that introduced me to the healthcare industry. I was hooked on contributing anyway I could to the healthcare missions for Veterans. As I got more educated, I wanted to focus more on the preventative side of care. Healthcare is one of the most important elements to a great life.

CONNECTION TO ACHE:

Q. How long have you been a member of ACHE?

A: I have been a member of ACHE for 8 years, during which I have built invaluable connections and insight into the evolving landscape of healthcare administration.

Q: Why did you decide to join ACHE MN?

A: My regional CEO encouraged me to join ACHE MN, and it has been one of the best decisions for my career. Through ACHE, I have met numerous leaders and gained mentors who have guided me through pivotal moments in my career.

Q: Do you sit on any ACHE MN committees?

A: I actively participate in the Mentoring and Communication subcommittees, where I have contributed to developing new mentorship programs and enhancing communication strategies within the organization.

Q: Any advice for those thinking about joining ACHE?

A: Joining ACHE is an excellent opportunity to network with healthcare leaders and learn from their experiences. Personally, the connections and lessons I've gained have been instrumental in my professional growth. It truly is one of the best networking organizations in the world.

Q: What do you gain most from your ACHE membership/participation?

A: I stay current on what is occurring in healthcare. I am into technology, so it is always important for me to understand what others in the industry are doing.

MENTORSHIP:

Q: Did you (or do you) have a mentor that played a role in your navigating your career?

A: I have too many to mention. Mentors have and are important to me and my career decisions. My mentors of the past have helped me navigate from being a clerk to working for VA Central Office leading technology projects. Today, my mentors are who I bounce ideas and career opportunities off. It is important to have many different mentors with different backgrounds that can give you different perspectives.

Q: What stands out as some of the most important lessons your mentors have taught you?

A: One of the lessons my mentors taught me was hard work and preparation gives you the best chance at taking advantage of opportunities. Another lesson is to learn from everyone in an organization when you have time, regardless of their position. Lastly, networking is a key to opportunity.

PERSONAL:

Q: What do you do to recharge to avoid burnout?

A: I spend time with my family and stay involved in my children's sports and activities. I also love to watch captivating shows.

Q: What are some of your hobbies?

A: When time permits, I enjoy playing golf and basketball, which helps me stay active and clear my mind.

Q: Name something on your bucket list.

A: One of my dreams is to travel extensively and experience the diverse cultures around the world. Each new country offers a unique perspective that enriches my understanding of the world.

Q: What makes you the person you are?

A: My family and friends are my foundation and driving force. Their unwavering support and joy push me to strive for excellence in everything I do.

ROLE SPECIFIC:

Q: What motivated you to become a health care leader?

A: I always wanted to make a positive difference in the lives of many, especially Veterans. That is what has continued to push me to do more.

Q: Any advice that you can provide to someone else pursuing that pathway?

A: Network, study, get a mentor, and enjoy the journey. If one does the work, studies the industry, and makes the most of their opportunities, then it is likely that they will end up contributing at a high level.

Q: What have you enjoyed most about this role?

A: Being able to innovate the way VA delivers care to Veterans. As a Veteran, I also enjoy the success stories from my fellow Veterans.

Q: Anything unexpected?

A: There are always unexpected challenges in my line of work, which is creating apps that support patients and decision support tools that support staff. This is one of the reasons that I love what I do, because when those challenges present themselves, I get to find the solution.

Our **Member Feature** aims to highlight individual members and their diverse backgrounds, as well as celebrate the amazing work you do. Please share your story today or nominate a colleague who you think should be featured. Email us at contact@achemn.org

Interested?

EMAIL
CONTACT@ACHEMN.ORG



JOIN OUR COMMITTEES



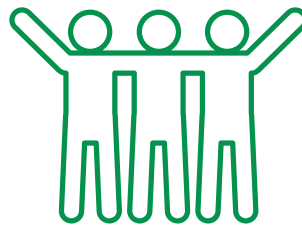
Whether you're a seasoned leader or just starting out, volunteering with ACHE MN is a great way to connect with peers, contribute to meaningful initiatives, and shape the future of healthcare leadership in our region.

Are you looking to grow your leadership skills, expand your network, and give back to the healthcare community? Our chapter is actively seeking passionate and committed members to join our committees!

We currently have openings in the following areas:

- Northern Local Program Council
- Finance Committee
- Membership and Advancement Committee
- Communications Committee

MEMBERS NEEDED



**NORTHERN LOCAL
PROGRAM COUNCIL**

MEMBERS NEEDED



**MEMBERSHIP &
ADVANCEMENT COMMITTEE**

MEMBERS NEEDED



**FINANCE
COMMITTEE**

MEMBERS NEEDED



**COMMUNICATIONS
COMMITTEE**

THANK YOU SPONSORS

THANK YOU TO OUR ANNUAL CORPORATE SPONSORS!

Chapter sponsorships are critical to helping us achieve our vision to be the premier professional society for healthcare executives. We're dedicated to providing our members with valuable resources, management insights, education, and tools to enable leaders in healthcare to achieve success. Visit www.achemn.org/sponsorships.



THANK YOU SPONSORS



ADDITIONAL OPPORTUNITIES TO SUPPORT OUR CHAPTER!

FUND-A-NEED



The **Chapter Development "Fund-A-Need" Program** is a platform designed to secure individual contributions that will be used to fund chapter activities and support the development of individual members and students.

You can find this feature on our website which allows for an easy one-time transaction. Click the "[Fund-A-Need](#)" button to access this feature or visit www.achemn.org/donate.

For those interested, we have sponsorship levels designed to meet any budget. We also have new benefits for our sponsors that include digital and social media coverage. Visit www.achemn.org/sponsorships.



More Than **600** Local Members Dedicated to Improving Healthcare

The Minnesota Chapter of the American College of Healthcare Executives is comprised of healthcare leaders from across the state. We are committed to advancement and excellence in healthcare leadership and we would like you to consider joining us.

The ACHE MN Chapter provides opportunities for professional development, networking, mentorship, collaboration and more.



OUR MISSION

To advance our members in healthcare management.

Healthcare Leaders, Join Us!



OUR VISION

To be the premier professional society for healthcare leaders dedicated to improving the delivery of care.



OUR VALUES

As members of the American College of Healthcare Executives, we are committed to:

Integrity: We advocate and demonstrate high ethical conduct in all we do.

Lifelong Learning: We recognize lifelong learning is essential to our ability to innovate and continually improve our organizations, our profession, and ourselves.

Leadership: We lead through example and mentoring and recognize caring must be a cornerstone of our professional interactions.

Diversity: We advocate inclusion and embrace the differences of those with whom we work and the communities we serve.



ACHE OF MINNESOTA

AmericanCollege of
HealthcareExecutives
for leaders who care®

FOLLOW US ON SOCIAL MEDIA



Visit us at
ACHEMN.ORG



FOLLOW, LIKE & SHARE ACHE MN ON SOCIAL MEDIA



[LinkedIn](#)



[Instagram](#)



[Facebook](#)

ACHE of Minnesota

an independent chapter of



AmericanCollege of
HealthcareExecutives®

Communications Committee
CONTACT@ACHEMN.ORG