

QUICK INSTALLATION GUIDE

SMILE-BAT-10.1P/10.3P



Packing List

SMILE-BAT-10.1P



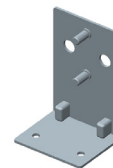
6 x ST4.8*60
Wall Anchor



6 x M5*10 Screw



Battery Communication Cable



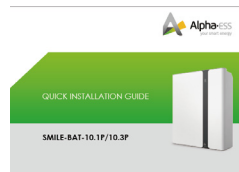
2 x Mounting Panel



4 x M6 Washer



2 x Power Cable (1 black, 1 red)

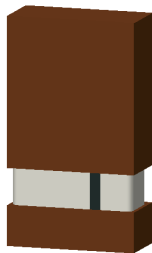


1 x Documentation

Mount brackets on the battery

Step1

Take out the battery from the packaging.

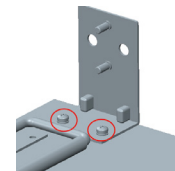
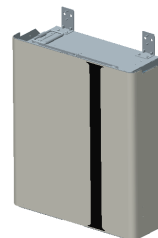


Step2

Assemble the mounting panels on the battery.

4 x M5*10 Screws

2 x Mounting Panels



Fix the battery

Step3

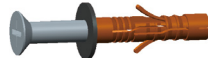
Push the battery against the wall, cover the top of the battery with cardboard provided in the accessory and drill 4 holes on the wall with drill $\Phi 8$. Remove the cardboard and secure the battery to the wall with screws.



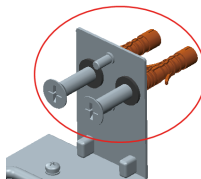
6 x ST4.8*60



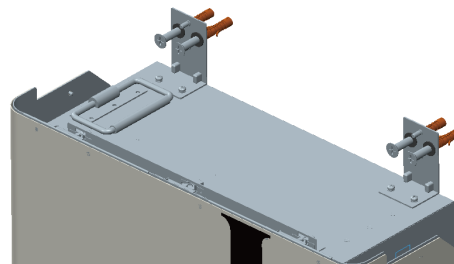
4 x Washer



Drill holes ($\Phi 8 \times 70\text{mm}$)



Tool: Cross 3#




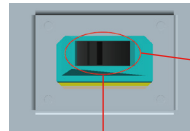
Cover the top of the battery to avoid the dirt.

Open maintenance window

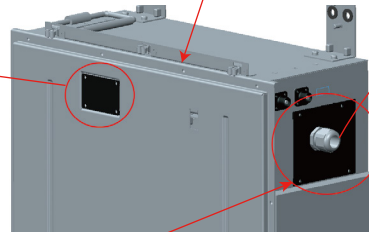
Step4

Open the front panel and remove the right side communication panel. Open the front panel of the **farthest** battery from the inverter and remove DIP baffle. Set the DIP switch 2 to "on" mode.

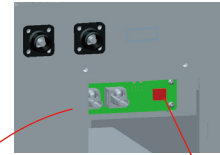
 **Turn off the battery circuit breaker**




Battery circuit breaker maintenance window



DIP baffle maintenance window

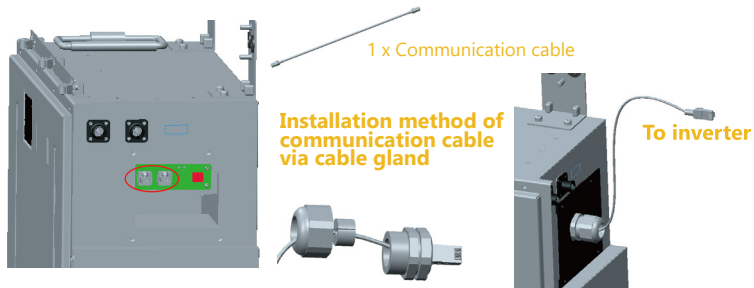


 **Only the farthest battery from the inverter needs to set DIP.**

Installation & Wiring

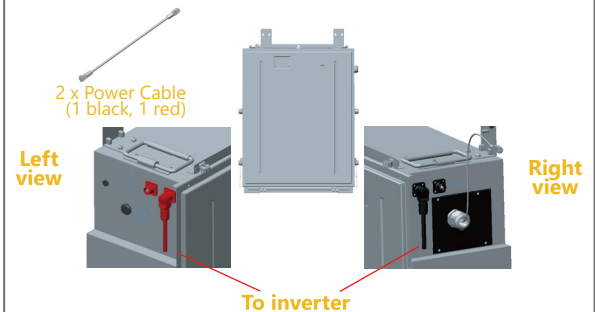
Step5

Connect the communication cable from the battery to the inverter.



Step6

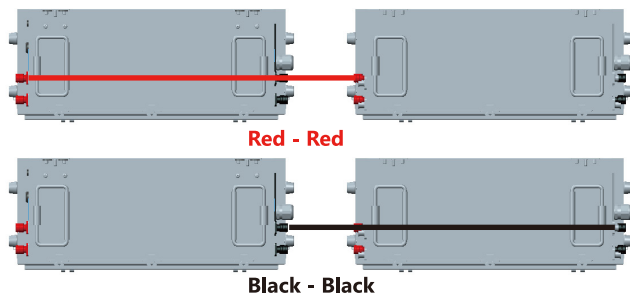
Connect the power cable from the battery 1 to the inverter.



Expansion cable

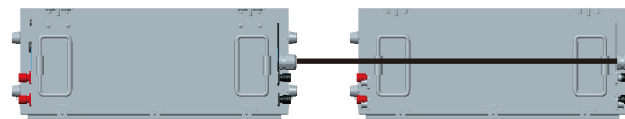
Step7

Connect the power cables from BAT2 to BAT1.



Step8

Connect the communication cables from BAT2 to BAT1.



Connect batteries first if more batteries are to be added.

Close maintenance window

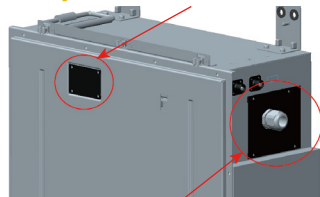
Step9

Close the DIP baffle and battery front panel.



Turn ON the battery circuit breaker.

Battery circuit breaker maintenance window



DIP baffle maintenance window



Add extra batteries

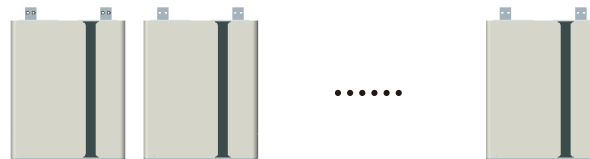
Step10

To install another battery repeat Steps 1~9

Please install extra batteries only by the side if more are to be added.



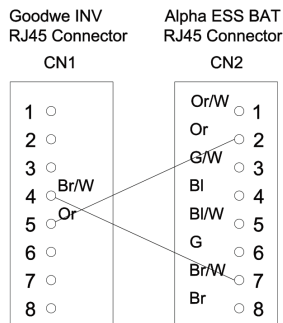
You can add up to 6 extra batteries with maximum one in a string.



Configuration with GoodWe Inverter

GoodWe (EM, ES series)

The communication cable between INV and BAT is not regular net cable, it should be as below:



1. If there is **only one** BAT, DIP switch of BAT should be set as below:

Battery Position	DIP 1	DIP 2	DIP 3	DIP Switch
one BAT	OFF	ON	ON	

2. If there are **two or more than two** BAT, DIP switch of BAT should be set as below:

Battery Position	DIP 1	DIP 2	DIP 3	DIP 4	DIP Switch
other BAT	OFF	OFF	ON	OFF	
Farthest BAT	OFF	ON	ON	OFF	



If there are **two or more than two** BAT, after connecting the power cables, please refer to the following steps:

- A** Only connect the communication cable between batteries at the first, and turn on the batteries.
- B** Wait until batteries get to work mode (The green light flashes every 10 seconds) and then connect the communication cable between BAT and INV.

Configuration with Inverter

GoodWe SBP /AlphaESS SMILE 5 series

The communication cable between INV and BAT is regular net cable.

1. If there is **only one** BAT, DIP switch of BAT should be set as below:

Battery Position	DIP 1	DIP 2	DIP 3	DIP 4	DIP Switch
one BAT	OFF	ON	OFF	OFF	

2. If there are **two or more than two** BAT, DIP switch of BAT should be set as below:

Battery Position	DIP 1	DIP 2	DIP 3	DIP 4	DIP Switch
other BAT	OFF	OFF	OFF	OFF	
Farthest BAT	OFF	ON	OFF	OFF	

Headquarter: Alpha ESS Co., Ltd.

☎ +86 513 806 068 91
✉ info@alpha-ess.com
🌐 www.alpha-ess.com
🏢 JiuHua Road 888, Nantong High-Tech
Industrial Development Zone, Nantong City,
226300

Germany: Alpha ESS Europe GmbH

☎ +49 610 3459 1601
✉ europe@alpha-ess.de
🌐 www.alpha-ess.de
🏢 Paul-Ehrlich-Straße 1a, 63225 Langen, Hessen

Suzhou: Alpha ESS Suzhou Co., Ltd.

☎ +86 512 6828 7609
✉ info@alpha-ess.com
🌐 www.alpha-ess.com
🏢 Level 15,SIPC 158 Wangdun Road SIP
Suzhou, 215028

Italy: Alpha ESS Italy S.r.l.

☎ +39 599 239 50
✉ info@alpha-ess.it
🌐 www.alpha-ess.it
🏢 Via Loda,17-41013 Castelfranco Emilia (MO)

Australia: Alpha ESS Australia Pty. Ltd.

☎ +61 402 500 520 (Sales)
+61 1300 968 933 (Technical Support)
✉ australia@alpha-ess.com
🌐 www.alpha-ess.com.au
🏢 Suite 1, Level 1, 530 Botany Road, Alexandria,
NSW, 2015

Korea: Alpha ESS Korea Co., Ltd

☎ +39 599 239 50
✉ info@alpha-ess.it
🌐 www.alpha-ess.it
🏢 Via Loda,17-41013 Castelfranco Emilia (MO)

UK: Alpha ESS UK Co., Ltd

✉ uk@alpha-ess.com
🏢 Drake House, Long Street, Dursley, gl11 4hh