

## LGES-5048 QUICK INSTALLATION INSTRUCTIONS

### PART 1

QUICK  
INSTALLATION

### PART 2

BATTERY  
CONNECTION

### PART 3

WiFi  
CONFIGURATION

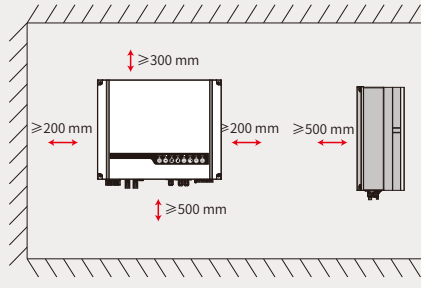


340-00567-00

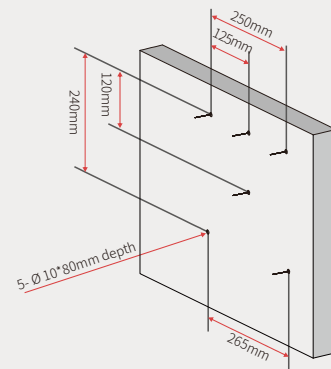
## Step 1. Instructions For Quick Installation

## A Installation Space

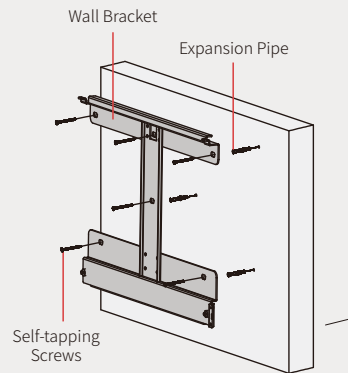
Upward ..... 300 mm  
Downward ..... 500 mm  
Front ..... 300 mm  
Left and right side ..... 200 mm



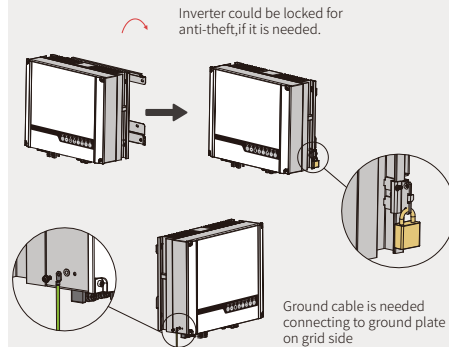
## B Dimensions For Drilling Holes



## C Fix the Wall Bracket



## D Installation

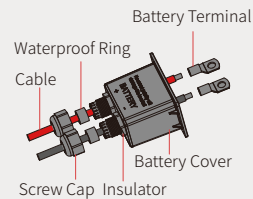


## E Battery wire Assembly and Connection

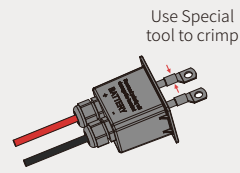


Description	Size
A External diameter of the wire	10~12mm
B Sectional area of conducting materials	35mm <sup>2</sup>
C Length of bare wire	Approx.10mm

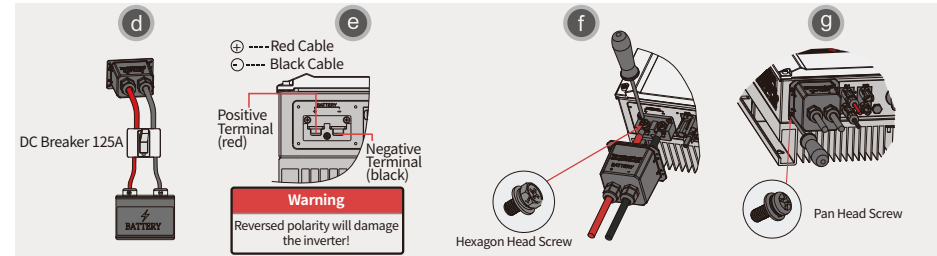
a



b

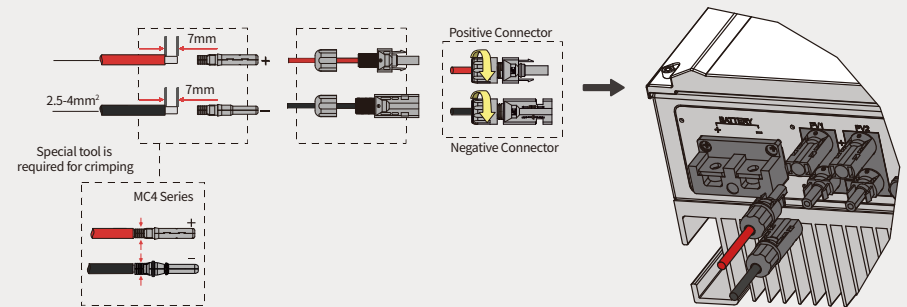


c

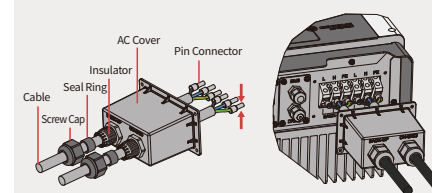


## F DC Cable Assembly and Connection

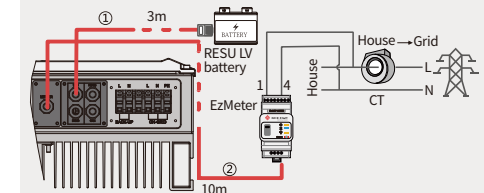
⚠ DC cable should be dedicated PV cable (suggest using 4mm<sup>2</sup> PV1-F cable)



## G AC Cable Assembly and Connection



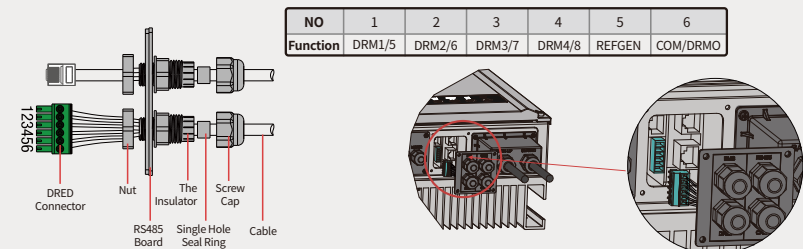
## H Communication Cable Connection



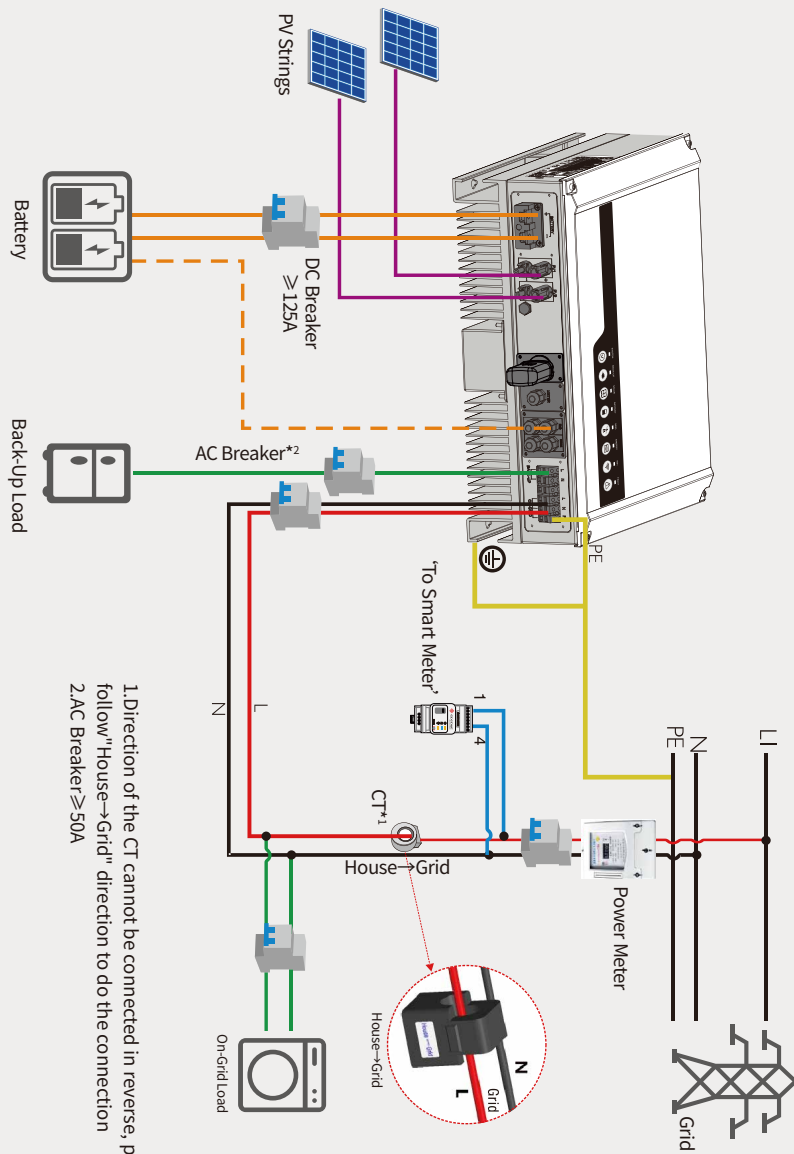
Note: 1 To Battery communication cable  
2 To Smart meter communication cable (could be extended to max 100m)

## I DRED Cable Assembly

⚠ DRED connection is only available for Australia and New Zealand.



NO	1	2	3	4	5	6
Function	DRM1/5	DRM2/6	DRM3/7	DRM4/8	REFGEN	COM/DRMO



## Step 2. SOP of Battery Connection with LG Energy Solution RESU

## LG RESU

Please refer to LG RESU Installation Manual for full battery installation instructions.

**A** Make sure that the inverter and the battery pack is turned off before connecting the battery pack to the inverter (Refer to Pic.1)

**B** Remove the top cover. Hold both sides of the top cover and pull it upwards (Refer to Pic.2)

**C** Connect the 35mm<sup>2</sup> power cables...  
 (a) Pass power cables through grommets and connect M8 lug  
 (b) Remove clear plastic terminal cover and connect cables - torque 6Nm. Be sure not to reverse polarity.  
 (c) Replace terminal cover  
 (d) connect grounding wire through grommet with 6mm eyelet (see RESU LV battery installation manual)  
 (e) apply silicone sealant or putty to all grommets.  
 Pic.3

**D** (a) Cut off the plastic skin of the cable.  
 (b) Put the cable through the terminal cover plate.  
 (c) Plug the metal part into the M8 terminal lug which in inverter accessories box, then crimp the terminal tightly.  
 (d) Connect the power cable to the terminal block of the hybrid inverter and restore the inverter terminal cover plate. (Refer to Pic.4)  
 Pic.4

**E** The communication cable for battery is attached on the inverter (Refer to Pic.5)  
 Please use this cable as battery communication cable.  
 Pic.5

**F** The other side of "To Battery" cable should be connected CAN port on the top side of LG battery (Refer to Pic.6)  
 Pic.6

**H** On LGES PV Master, should choose the right battery type used in your system by "Battery Model" selection (Pic. 8) or battery communication will fail.  
 Pic.8

**I** After all connection and settings done, please check if battery communication is OK on LGES PV Master  $\rightarrow$  Param  $\rightarrow$  Battery Model selection (Pic. 8) or battery communication will fail (Pic. 9)  
 Pic.9

**G** There are three DIP switches and three rotary switches on battery, which should be set as below (Refer to Pic.7):  
 for DIP switch settings for 2 batteries using RESU Plus, see RESU Installation Manual  
 Pic.7

## Step 3.Wi-Fi Conguration Instruction

Note:WiFi Configuration could also be done on LGES PV Master App, for details, please download "LGES PV Master Operation Introduction" at <https://www.lgessbattery.com/au/home-battery/product-info.lg>

### A Preparation

1. Power Wi-Fi inverter (or Power on Inverter) on.
2. Power router on.

### C Preparation

- 1.Click 'Start Setup'

#### Please select you current wireless network

Firmware version	1.6.9.3.38-2.1.38
MAC address	60:C5:A8:60:33:E1
Wireless AP mode	Enable
SSID	Solar-WiFi
IP address	10.10.100.253
Wireless STA mode	Disable
Router SSID	WiFi_Burn-in
Encryption method	WPA/WPA2-PSK
Encryption algorithm	AES
Router Password	WiFi_Burn-in

Please select you current wireless network  
router doesn't exist, or signal is too weak, or password is incorrect.

★ Help: Wizard will help you to complete setting within one minute.

Start Setup

The Wi-Fi module parameters please refer to 'Device information' column above.

#### Please select you current wireless network

SSID	Sec mode	Enc type	Channel	RSSI
WiFi-Test	WPA2-PSK	AES	06	54%

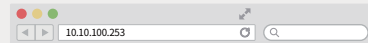
★ Note: When RSSI of the selected Wi-Fi network is lower than 15%, the connection may be unstable, please select other available network or shorten the distance between the device and router. If your wireless router does not broadcast SSID, please click 'Next' and add a wireless network manually.

Back Next

If the router is not in the site list, please refer to No.4 in 'Troubleshooting'.

### B Connect to 'Solar-WiFi'

- 1.Wi-Fi name: Solar-WiFi>(\* means the last 8 characters of inverter serial NO.)Password: 12345678
- 2.Browse website: 10.10.100.253



B-3: Enter User name:admin, Password:admin, click OK

Admin(U) :

Password :

☒ Remember the password(R)

### D Connect to 'Solar-WiFi'

- 1.Fill in router password and click 'Next'

#### Add wireless network manually:

Network name (SSID)

Encryption method

Encryption algorithm

#### Please enter the wireless network password:

Password (8-63 bytes)

☒ Remember the password(R)

★Note: case sensitive for SSID and Password.  
Please make sure all parameters of wireless network are matched with router, including password.

Back Next

Please make sure all parameters of wireless network are matched with the router's, including password.

#### Save success!

Click 'Complete', the current configuration will take effect after restart.

If you still need to configure the other pages of information, please go to complete your required configuration.

Configuration is completed, you can log on the Management page to restart device by click on 'OK' button.

Confirm or complete?

Back Complete

Note:  
The 'Solar-WiFi' signal will disappear after inverter connects to WiFi router. Turn off router or do WiFi reload operation via button on inverter if you need connect to 'Solar-WiFi' once again.

### E Troubleshooting

No.	Problem	Checking Items
1	Cannot Find Solar-WiFi Signal	1.Make sure inverter is powered on; 2.Move your smart device closer to inverter; 3.Restart inverter; 4.Do "WiFi Reload" operation refer to user manual.
2	Cannot connect to Solar-WiFiSignal	1.Try password: 12345678; 2.Restart inverter; 3.Make sure there is no other device connected to Solar-WiFi; 4.Do "WiFi Reload" operation and try again.
3	Cannot login website 10.10.100.253	1.Make sure user name and password you use are both admin; 2.Do "WiFi Reload" operation and try again; 3.Try another browser (suggest use Google, Firefox, IE, Safari etc.); 4.Make sure website you log in is 10.10.100.253
4	Cannot find router SSID	1.Move router closer to inverter or use a Wi-Fi repeater device; 2.Connect to router and login the setting page to check the channel it uses. Please make sure the channel is not bigger than 13. Otherwise, modify it.

No.	Problem	Checking Items
5	Cannot Find Solar-WiFi Signal	1.Restart inverter 2.Connect to Solar-WiFi and login again, check the 'SSID', 'Security Mode', 'Encryption Type' and 'Pass Phrase' is matching with that of router or not; 3.Connect to router and login to check if the connection reaches the maximum amount or not, and to check the channel of it uses. Please make sure the channel is not bigger than 13. Otherwise, modify it; 4.Restart router; 5.Move router closer to inverter or use a WiFi repeater device.
6	After configuration, WiFi Led on inverter blink four times repeatedly	1.Connect to the router and visit the portal <a href="http://www.lgreshomemonitor.com">www.lgreshomemonitor.com</a> Check the portal is available or not; 2.Restart router and inverter; 3.Make sure the inverter is registered on the platform.