



No. 57 Jintong Road,  
Binhai (Sea front) Industrial Park,  
Xiangshan, Ningbo, Zhejiang, 315712, P.R.China  
Tel: (+86) 574 6578 1806 Fax: (+86) 574 6578 1606  
E-Mail: [info@Ginlong.com](mailto:info@Ginlong.com)

---

## Upgrade SOP for Solis Inverter Compliance to AS/NZS 4777.2:2020

### 1. Scope

From 18th Dec 2021, all newly installed inverters in Australia need to comply with AS/NZS 4777.2:2020 standard and have grid code parameters set per Australia A/B/C requirements during commissioning.

The following Solis inverter models with AS/NZE 4777.2:2015 compliance can achieve AS/NZS 4777.2:2020 compliance after firmware upgrade.

- Solis-mini-(1000-3600)-4G
- Solis-1P(3-6)K-4G
- Solis-1P(7-8)K-5G
- Solis-3P(5-20)K-4G
- Solis-(25-50K)K-5G

*Note:*

- *More models may be added. Please contact [service@solisinverters.com.au](mailto:service@solisinverters.com.au) or 03 8555 9516 for confirmation*
- *-MX models can be upgraded with the firmware of same series inverter of equivalent capacity.*
- *All S5 series products are AS/NZS 4777.2:2020 compliant and no require firmware upgrade.*

### 2. Registration Process

So that regulatory inspection and confirmation requirements to manage the upgrade details and confirm the compliance of upgraded inverters, the installer is required to register the inverter details on the following website before performing inverter upgrade. All inverters being upgraded without the registration details will void the inverter warranty and potentially fail inspections or audits.

<https://www.solisinverters.com.au/inverter-upgrade/>

### 3. Upgrade Process - Onsite upgrade with Solis Wi-Fi dongle

**Important:** Upgrade the inverter to AS4777:2:2020 firmware before connecting to the Solis Wi-Fi monitoring system. It will not be possible to upgrade the firmware once the Wi-Fi monitoring has been activated. Please don't take calls or make calls on this device during upgrade process.

After the registration process, please contact [service@solisinverters.com.au](mailto:service@solisinverters.com.au) or 03 8555 9516 to obtain the corresponding firmware files (HMI Firmware File and API Firmware File).

**Step 1.** Power up the inverter by PV.

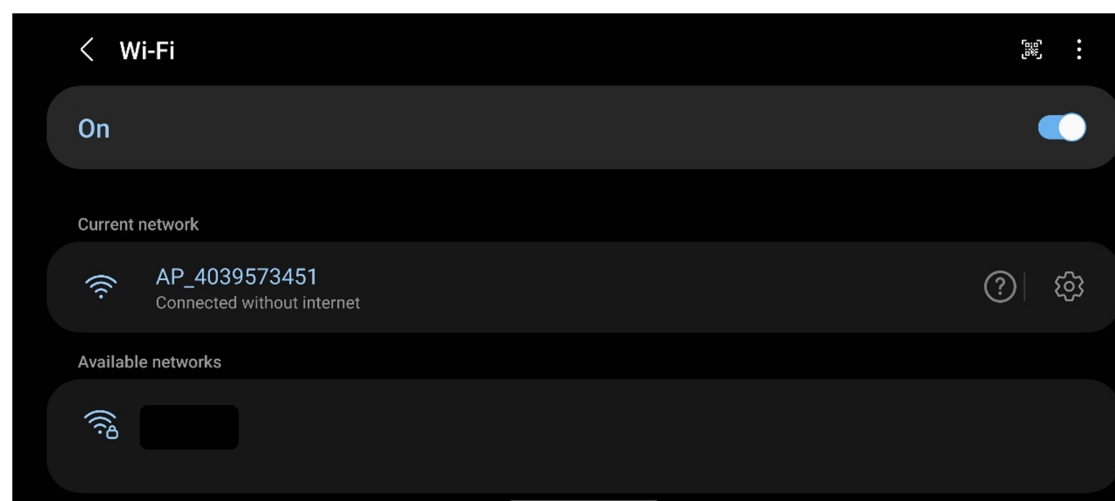
**Step 2.** Connect the Solis Wi-Fi dongle to the inverter 4pin round COM port



**Step 3.** Turn off the Mobile data on your phone/laptop

**Step 4.** Forget any existing Wi-Fi connections on your phone/laptop

**Step 5.** Use your mobile phone or laptop to connect the Wi-Fi signal from the Solis Wi-Fi dongle (Wi-Fi Signal Name: **AP\_XXXXXXXXXX**)



**Step 6.** Open your browser and enter “10.10.100.254” web address

**Step 7.** Username: admin (Password: admin)

**Step 8.** Click the “**Status**” tab please check if your inverter serial number is visible. (If information is blank, please wait 5mins and refresh to check again or unplug the Wi-Fi dongle and plug it back IN).

No internet connection

中文 | English

Status

Wizard

Quick Set

Advanced

Upgrade

Restart

Reset

- Inverter information

Inverter serial number	030AC018C140153
Firmware version (main)	0018
Firmware version (slave)	001B
Inverter model	00AC
Rated power	--- W
Current power	--- W
Yield today	0.0 kWh
Total yield	5736.0 kWh
Alerts	F10
Last updated	0

+ Device information

+ Remote server information

Help

The device can be used as a wireless access point (AP mode) to facilitate users to configure the device, or it can also be used as a wireless information terminal (STA mode) to connect the remote server via wireless router.

Status of remote server  
◆Not connected:  
Connection to server failed last time.  
If under such status, please check the issues as follows:  
(1) check the device information to see whether IP address is obtained or not;  
(2) check if the router is connected to internet or not;  
(3) check if a firewall is set on the router or not;

Web Ver:1.0.23

**Step 9.** Click “**Upgrade**” tab and then Click “**Upgrade Inverter**” tab

中文 | English

Status

Wizard

Quick Set

Advanced

Upgrade

Upgrade firmware

Upgrade inverter

Restart

Reset

Upgrade inverter software

Current version:  

Choose file

 HML\_WIFI.bin  

Upload

Help

The firmware of inverter can be updated by uploading the update files from your local computer.

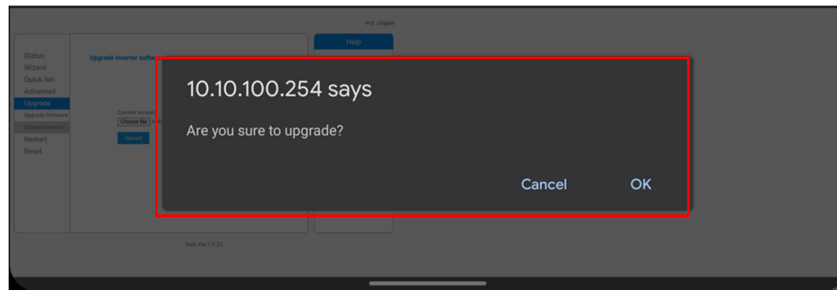
★Note: After upgrade, the device will automatically restart.

After restart, you will need to re-login the configuration interface. It is recommended to restart after completing all configurations.

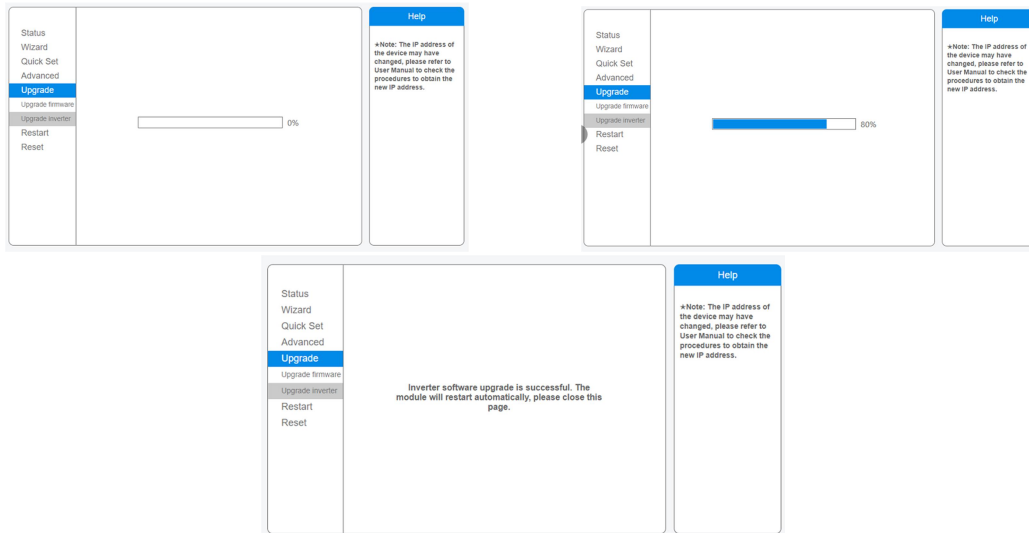
Web Ver:1.0.23

**Step 10.** Select one of the firmware files that Solis service team sent you.

**Step 11.** Press “**Upload**” and wait for “confirmation popup window” Click OK to start the upgrade. (Do Not refresh the page or do not click again)



**Step 12.** Wait for the upgrade to end. See the status bar with percentage complete.



**Step 13.** Repeat **Steps 10, 11,12** with second firmware file provided

**Step 14.** After both upgrades, your inverter is now with AS/NZS 4777.2:2020 compliant firmware

**Note:** If you found the webpage pop up a window **“The inverter software upgrade failed, please try again!”** Please try to restart the inverter and then try the upgrade steps again

**Note:** Please contact [service@solisinverters.com.au](mailto:service@solisinverters.com.au) or 03 8555 9516 for assistance if the upgrade fails or any unexpected events happen.

## 4. Grid Code Configuration

After firmware upgrade, please enter the following setting path on inverter LCD to configure the corresponding grid code.

**Setting Path:** Advanced Setting -> Password: 0010 -> Select Standard -> Press “up” or “down” to find the “4777-A”/“4777-B”/“4777-C” grid code. Choose according to your requirement.



Press “Enter” to view the grid code parameters.



Press ESC to see "Save & Send" option, press enter to select "Save &Send"



Press ESC to see "Save & Send" option, press enter to select "Save &Send"



Press ESC to see "Save & Send" option, press enter to select "Save &Send"



After 3 times, you will see "Done!"



Now your inverter is set with corresponding AS/NZS4777.2:2020 compliant regional settings  
Australia A/ Australia B/ Australia C

**Note:** If you are not able to find the "4777-A" / "4777-B" / "4777-C", it means the firmware is not AS/NZS4777.2:2020 compliant, Please contact [service@solisinverters.com.au](mailto:service@solisinverters.com.au) or 03 8555 9516 for assistance.

**Disclaimer:** Ginlong Solis have offered this AS4777:2:2020 firmware upgrade process to assist customers to utilize their otherwise obsolete and redundant AS4777:2:2015 compliant inventory. Ginlong Solis cannot warrant nor guarantee that any specific customer will be successful when using this upgrade process on any specific inverter. Ginlong Solis offer to assist customers to the limited extent that is possible through our skilled technical support staff.

