

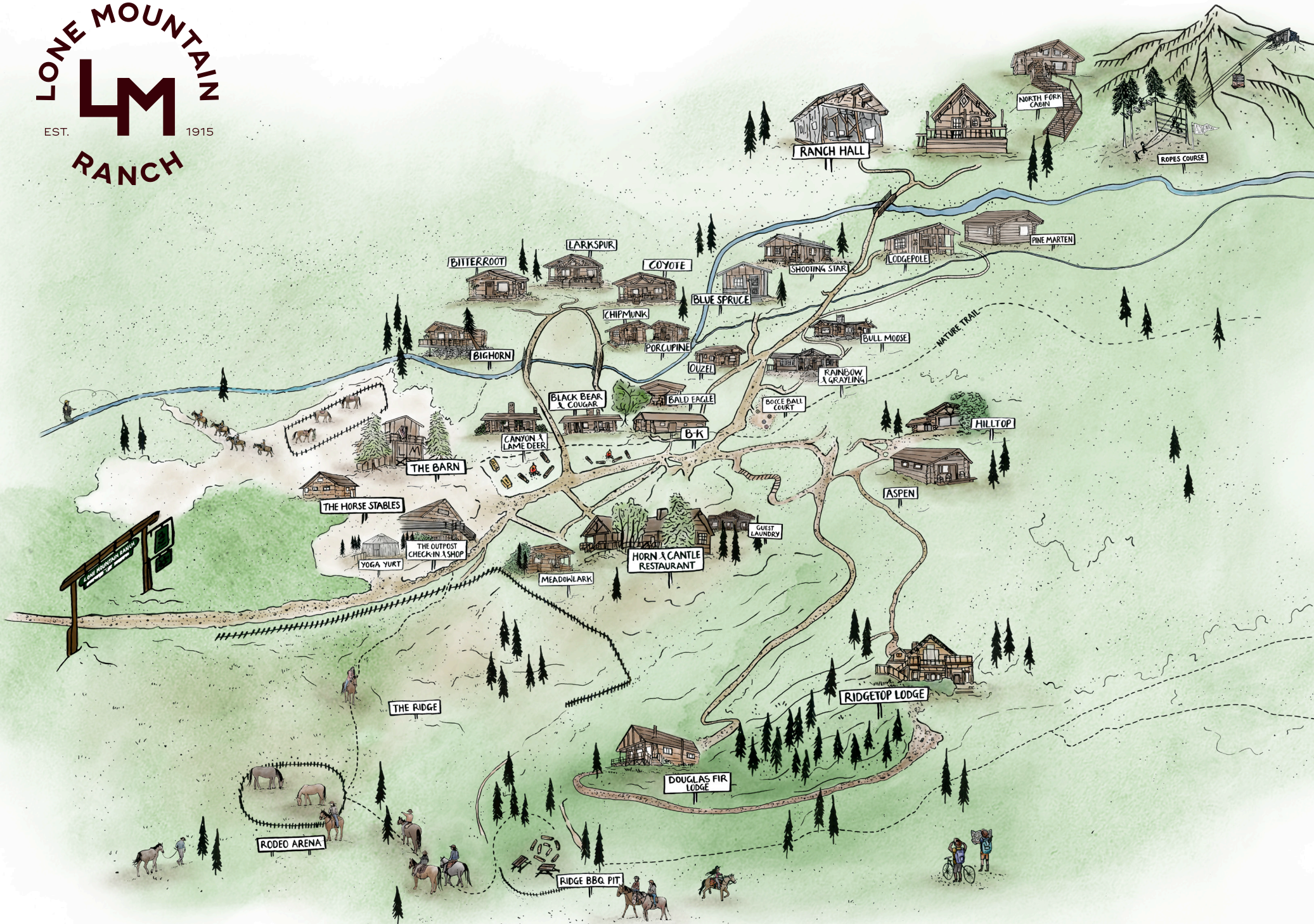
EST. **LM** 1915

## LONE MOUNTAIN RANCH

BIG SKY, MONTANA

**Our Cabins**







# One Bedrooms

OUZEL

PINE MARTEN

BALD EAGLE

MEADOWLARK

PORCUPINE

LODGEPOLE

CHIPMUNK

BLUE SPRUCE

RAINBOW

GRAYLING

BITTERROOT

BLACK BEAR

COUGAR

LAME DEER

CANYON

BULL MOOSE



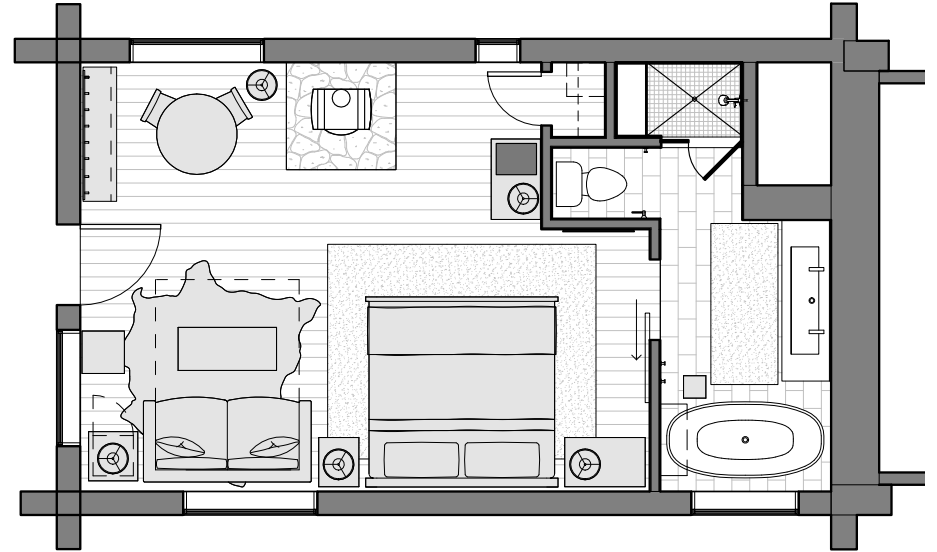
[LONEMOUNTAINRANCH.COM/CABINS](http://LONEMOUNTAINRANCH.COM/CABINS)



# Ouzel

1 BEDROOM | 1 BATHROOM | SLEEPS 2

Named for North America's only aquatic songbird, this one-bedroom cabin is perfect for nesting. Unwind in style in the claw-foot tub or by the wood stove. Enjoy the luxury of the king-sized bed, queen sleeper sofa, sitting area, or full bath with walk-in tile shower. You'll be singing this cabin's praises for years to come!



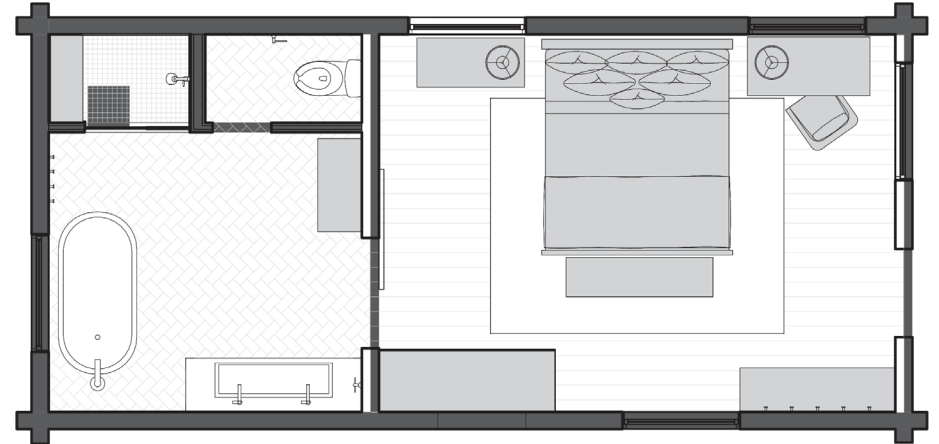
[LONEMOUNTAINRANCH.COM/CABINS](http://lonemountainranch.com/cabins)



# Pine Marten

1 BEDROOM | 1 BATHROOM | SLEEPS 2

This large one-bedroom cabin, tucked just between the lodgepole pines, is the perfect home for your treasured time in Big Sky. Named after the agile and playful Pine Marten, the cabin features a king-sized bed, wood stove, sitting area, expansive bath with walk-in tile shower, and front porch with views of North Fork creek.



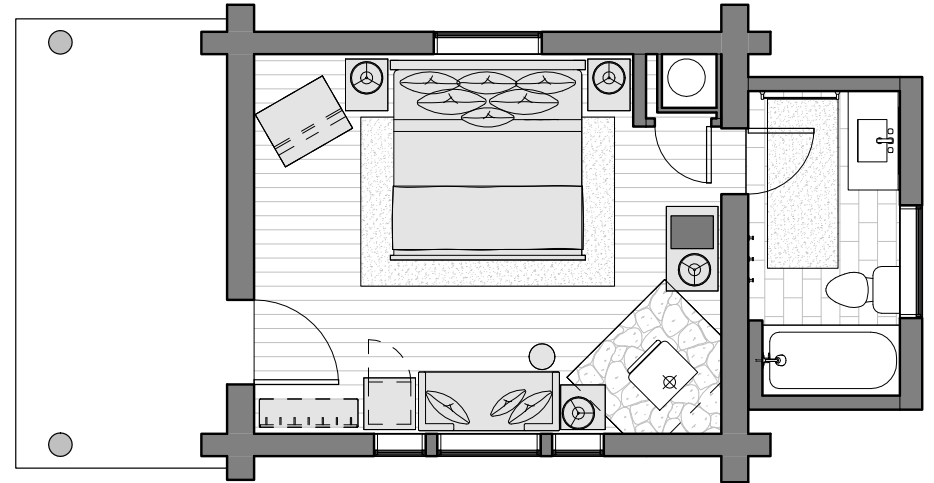
[LONEMOUNTAINRANCH.COM/CABINS](https://lonemountainranch.com/cabins)



# Bald Eagle

1 BEDROOM | 1 BATHROOM | SLEEPS 2

Relax and take in the ranch life with this breezy, one-room bedroom log cabin with a king-sized bed, sitting area, wood stove, and full bath. Originally known as the “Bath House,” the Bald Eagle rests on the shore of the North Fork Creek — an ideal location to feel the soft breeze through the windows or get lost in the sound of the nearby running waters all year long.



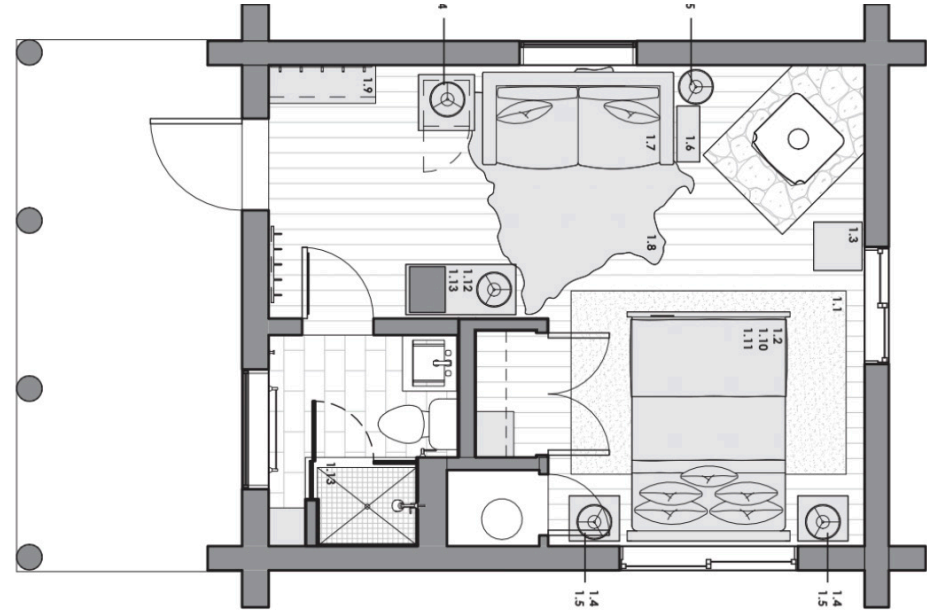
[LONEMOUNTAINRANCH.COM/CABINS](https://lonemountainranch.com/cabins)



# Meadowlark

1 BEDROOM | 1 BATHROOM | SLEEPS 2

Nearly a century old, Meadowlark was the original “Gatekeeper’s Cabin” for the ranch’s first caretakers. Its secluded location is perfect for those seeking a cozy, private experience and its décor strikes a balance between modern comfort and authentic ranch surroundings (featuring a porch with a wooden swing, queen bed, wood stove, and full bath with walk-in tile shower).



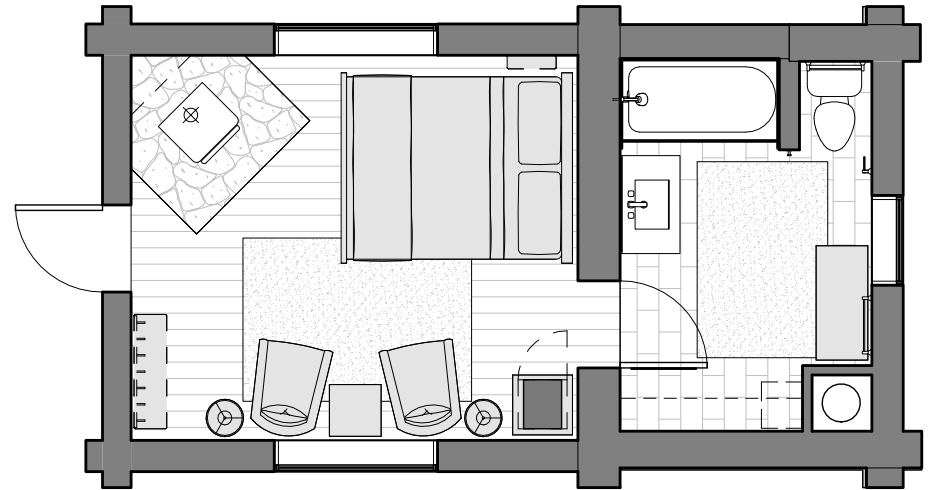
[LONEMOUNTAINRANCH.COM/CABINS](https://lonemountainranch.com/cabins)



# Porcupine

1 BEDROOM | 1 BATHROOM | SLEEPS 2

Known originally as the ranch's "Ice House," Porcupine was built in 1920s. Its rustic floors, rich fabrics, queen bed, sitting area, wood stove, and full bath deliver enough warmth to melt its former reputation. Admire the North Fork Creek from the Porcupine's shared deck.



[LONEMOUNTAINRANCH.COM/CABINS](https://lonemountainranch.com/cabins)



# Lodgepole

1 BEDROOM | 1 BATHROOM | SLEEPS 2

Whether you're on a romantic getaway or on a solo journey, enjoy views of the eastern mountains or the ranch property from the porch of Lodgepole. This cabin features the essentials you need to relax and unwind, including a King bed, a wood stove, a desk for journaling, and full bath including a separate soaking tub and shower.



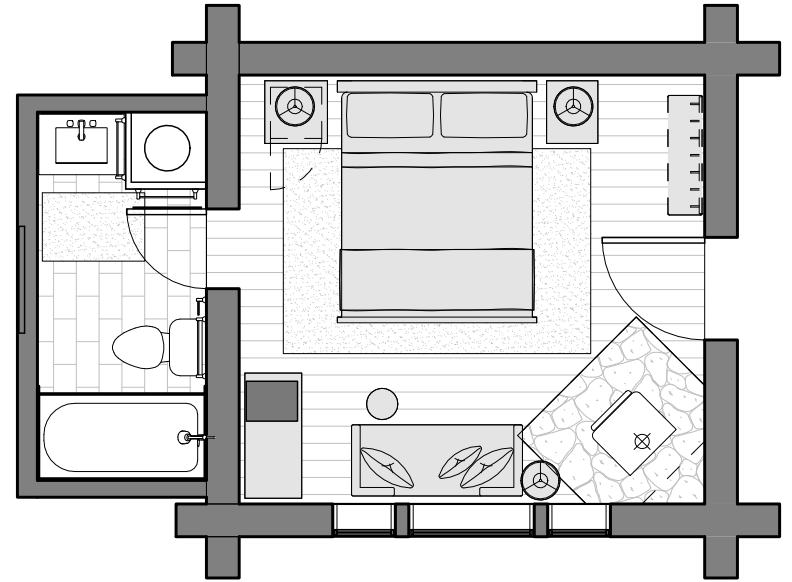
[LONEMOUNTAINRANCH.COM/CABINS](https://lonemountainranch.com/cabins)



# Chipmunk

1 BEDROOM | 1 BATHROOM | SLEEPS 2

Built from lodgepole pine in 1927, Chipmunk was the ranch's original "Cook's Cabin." Though no longer the chef's hub, this cabin's shared deck is ideal for curling up with your favorite snack and listening to the nearby North Fork Creek. Chipmunk features a queen bed, sitting area, wood stove, and full bath.



[LONEMOUNTAINRANCH.COM/CABINS](https://lonemountainranch.com/cabins)



# Blue Spruce

1 BEDROOM | 1 BATHROOM | SLEEPS 2

Tucked away in the trees beside the North Fork creek, this one-room cabin features a king bed, a lovely desk, a wood stove, and a full bath including claw foot tub. The Blue Spruce is ideal for a single guest, or a couple. The shaded front porch offers the perfect place to relax throughout the day.



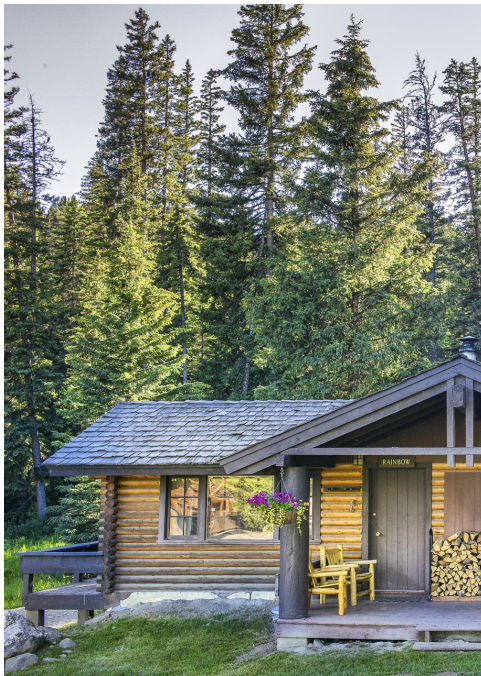
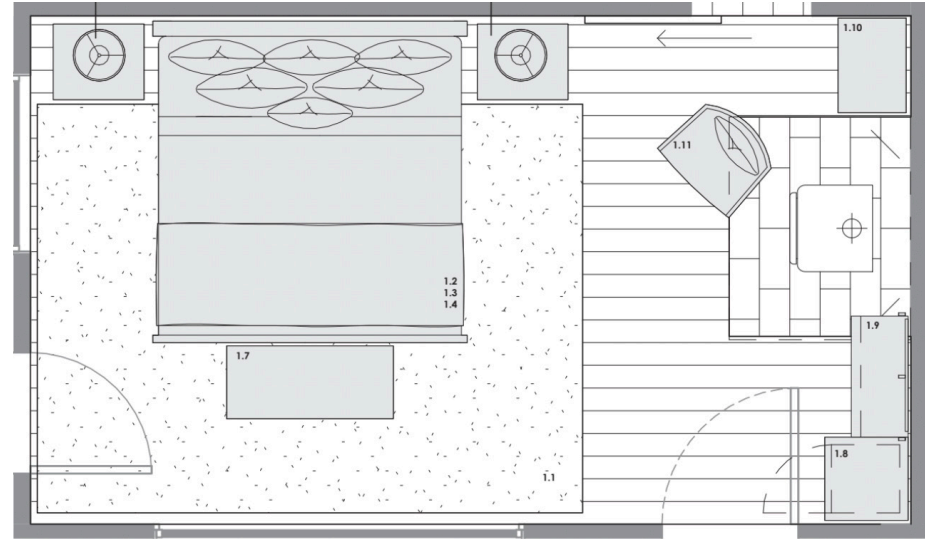
[LONEMOUNTAINRANCH.COM/CABINS](http://lonemountainranch.com/cabins)



# Rainbow

1 BEDROOM | 1 BATHROOM | SLEEPS 2

This cabin combines a convenient location with a breathtaking view. Admire Yellow Mountain from the shared patio. Relax and cozy up in this Rainbow Cabin which features a king bed, full bath, wood stove, and private side patio.



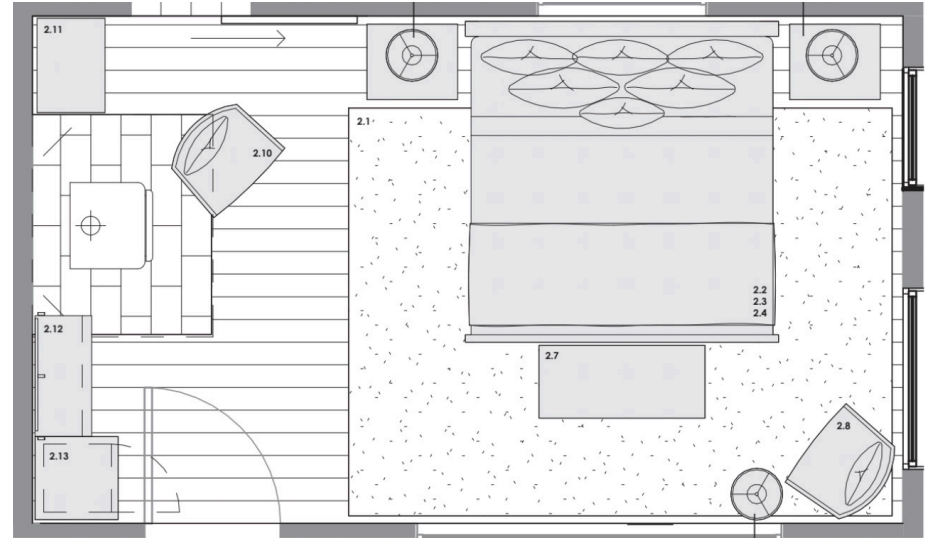
[LONEMOUNTAINRANCH.COM/CABINS](https://lonemountainranch.com/cabins)



# Grayling

1 BEDROOM | 1 BATHROOM | SLEEPS 2

This cabin combines a convenient location with a breathtaking view. Admire Yellow Mountain from the shared, covered porch or grab a local brew at the nearby Lodge or Saloon. This cabin features a king bed, full bath, and wood stove.



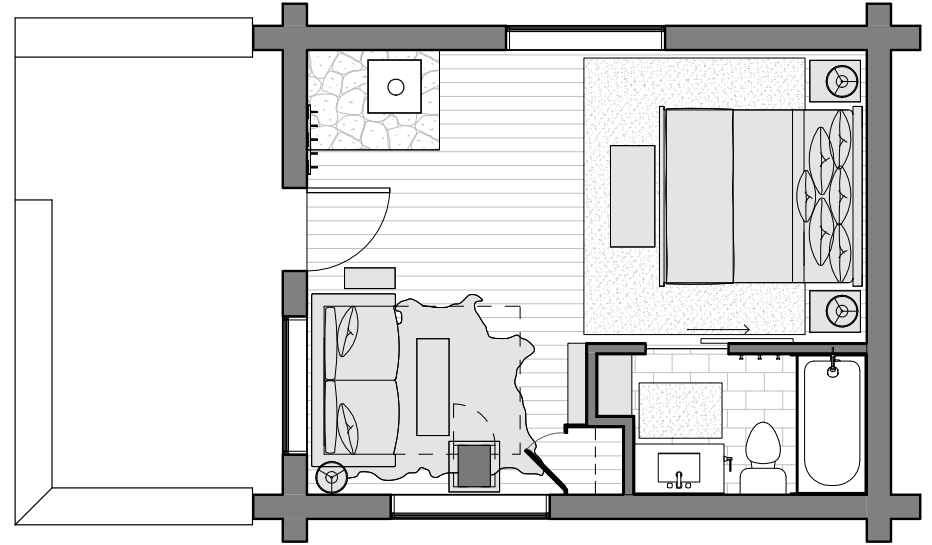
[LONEMOUNTAINRANCH.COM/CABINS](https://lonemountainranch.com/cabins)



# Bitterroot

1 BEDROOM | 1 BATHROOM | SLEEPS 3

This large one-bedroom cabin, tucked just behind the North Fork Creek between the lodgepole pines, will inspire your sense of adventure. Named after Lewis and Clark's favorite wildflowers, the Bitterroot cabin features a spacious front porch, king-sized bed, queen sleeper sofa, wood stove, sitting area, and full bath with walk-in tile shower. This rooms is ADA accessible.



[LONEMOUNTAINRANCH.COM/CABINS](http://lonemountainranch.com/cabins)

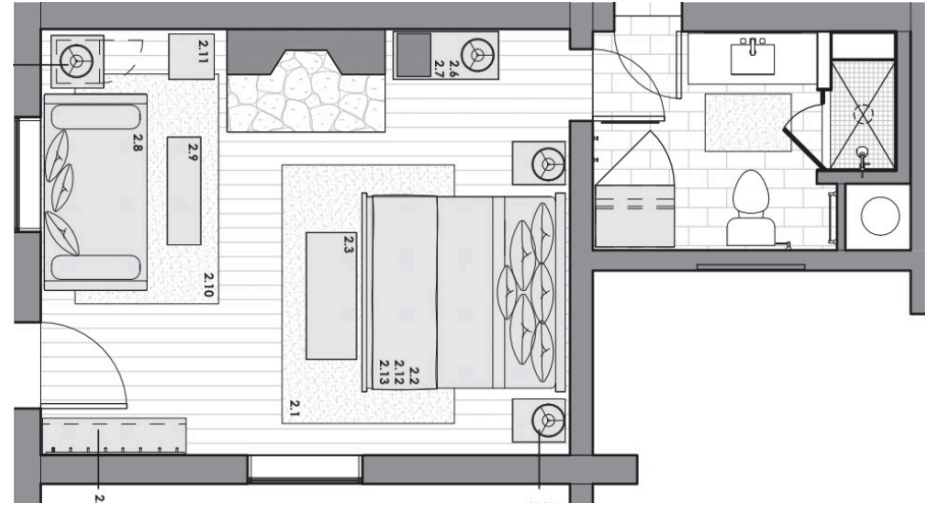


# Black Bear

1 BEDROOM | 1 BATHROOM | SLEEPS 3

A guest favorite, because of close proximity to Horn and Cattle this century-old cabin is perfect for a couple or family of three. Black bear features a king-sized bed, twin daybed, and full bath, and an original-stone fireplace.

*Can be connected to Cougar cabin to create a duplex for a larger family, additional charge.*



[LONEMOUNTAINRANCH.COM/CABINS](https://lonemountainranch.com/cabins)

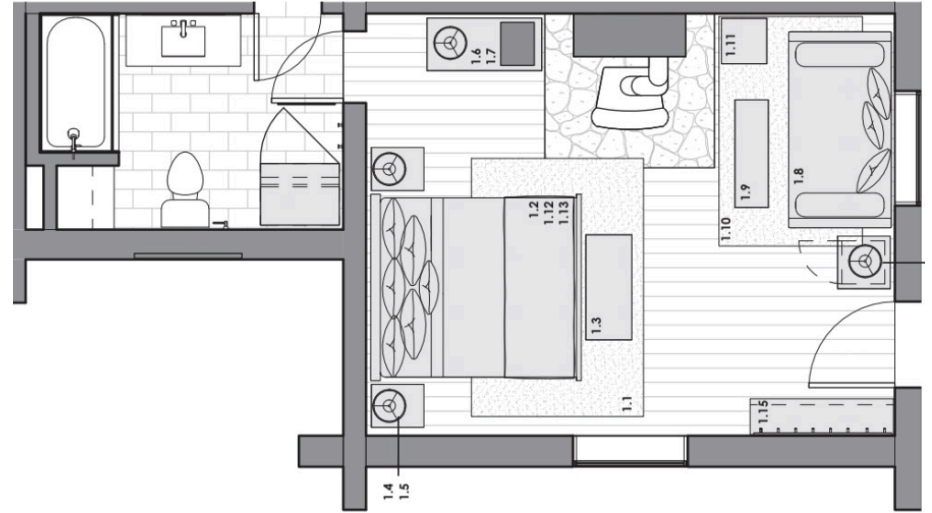


# Cougar

1 BEDROOM | 1 BATHROOM | SLEEPS 3

A guest favorite, because of close proximity to Horn and Cattle this century-old cabin is perfect for a couple or family of three. Cougar cabin features a king-sized bed, twin daybed, and full bath, and an pot belly stove.

*Can be connected to Black Bear cabin to create a duplex for a larger family, additional charge.*



[LONEMOUNTAINRANCH.COM/CABINS](http://lonemountainranch.com/cabins)

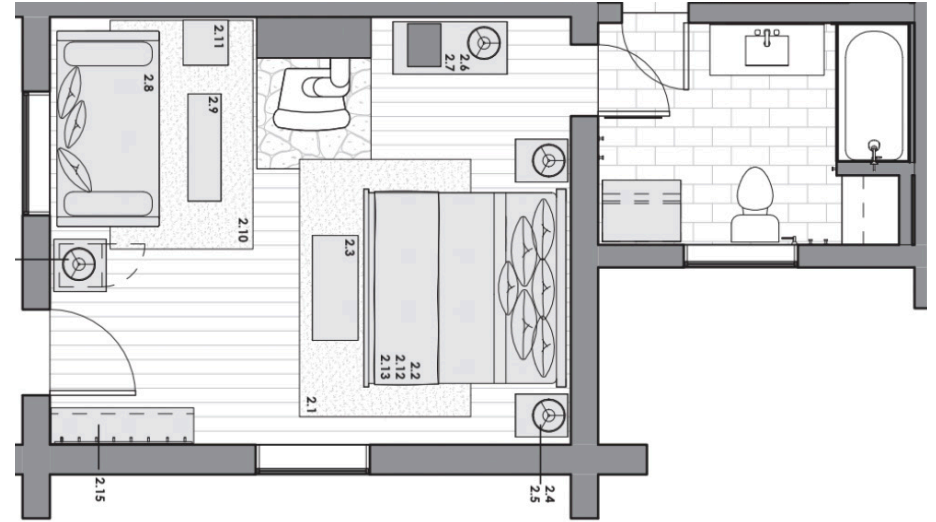


# Lame Deer

1 BEDROOM | 1 BATHROOM | SLEEPS 3

Built in 1927 from Lone-Pine-harvested pine, the Lame Deer is the definition of authentic mountain aesthetic, featuring a king-sized bed, twin daybed, full bath, and rustic wood floors. Canyon features its original stone fireplace, king-sized bed, twin daybed, and full bath with walk-in tile shower.

*Can be connected to Canyon cabin to create a duplex for a larger family, additional charge.*



[LONEMOUNTAINRANCH.COM/CABINS](https://lonemountainranch.com/cabins)

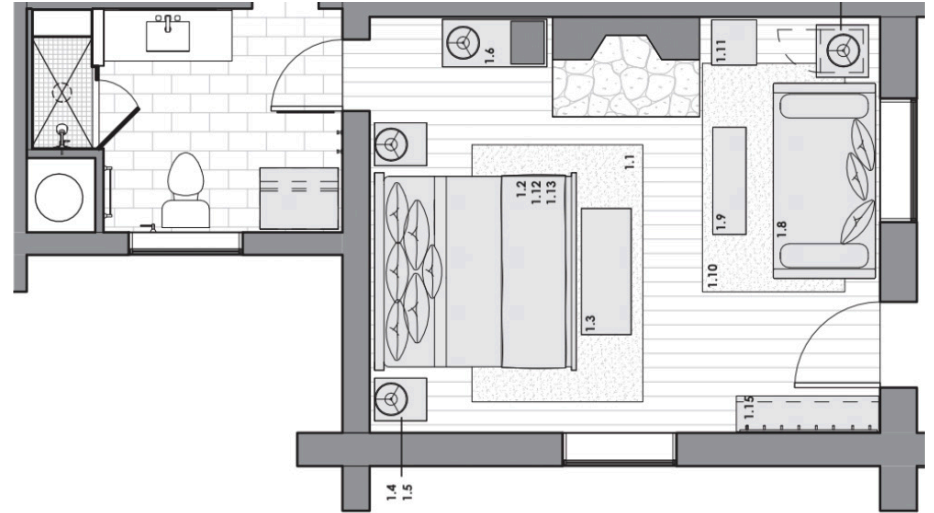


# Canyon

1 BEDROOM | 1 BATHROOM | SLEEPS 3

Built in 1927 from Lone-Pine harvested pine, the Canyon is the definition of authentic mountain aesthetic, featuring a king-sized bed, twin daybed, full bath, and rustic wood floors. Canyon features its original stone fireplace, king-sized bed, twin daybed, and full bath with walk-in tile shower.

*Can be connected to Lame Deer cabin to create a duplex for a larger family, additional charge.*



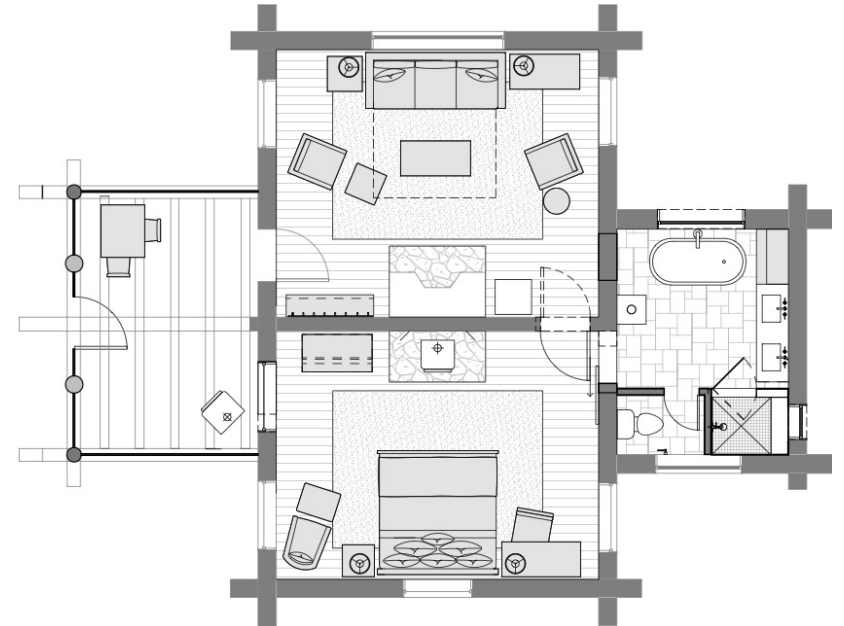
[LONEMOUNTAINRANCH.COM/CABINS](https://lonemountainranch.com/cabins)



# Bull Moose

1 BEDROOM | 1 BATHROOM | SLEEPS 4

Bull Moose is the perfect cabin for a small family, or a couple. This cabin features a large living room (including its original stone fireplace) and sitting area as well as a large bedroom with a king bed and a large patio with a wood stove. Enjoy the view by watching the sunrise over the mountains!



[LONEMOUNTAINRANCH.COM/CABINS](https://lonemountainranch.com/cabins)



# Two Bedrooms

HILLTOP  
ASPEN  
SHOOTING STAR  
BIGHORN  
COYOTE  
LARKSPUR  
B-K



[LONEMOUNTAINRANCH.COM/CABINS](https://lonemountainranch.com/cabins)

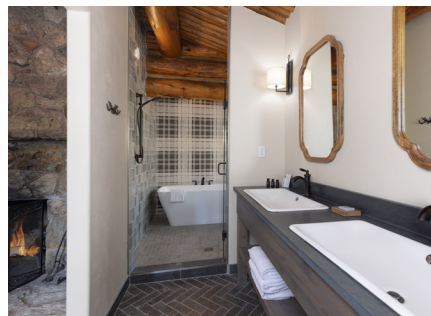
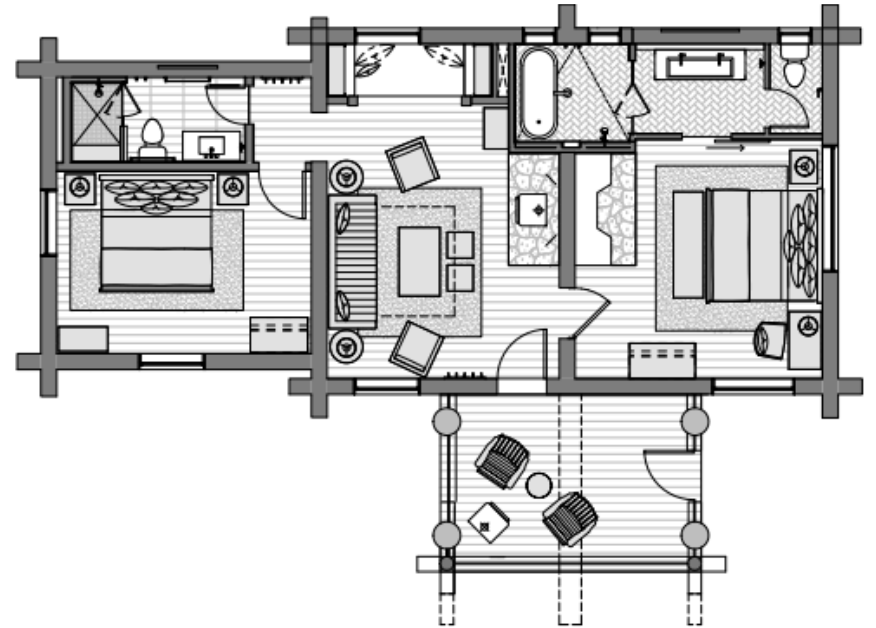




# Hilltop

2 BEDROOMS | 2 BATHROOMS | SLEEPS 5

The Hilltop cabin has one of the most unique histories of any place on the ranch. Custom-built for one of the ranch's original owners, all of its building materials were sourced from the ranch itself. With its gorgeous view of the ranch and surrounding mountains and screened-in porch, it's no wonder that the Hilltop is a guest favorite! Inside the cabin, there is a spacious living room with wood burning stove and a single daybed. One bedroom features a king bed, rock fireplace, and full bath. The second bedroom includes a king bed and a soaking tub.



[LONEMOUNTAINRANCH.COM/CABINS](http://lonemountainranch.com/cabins)

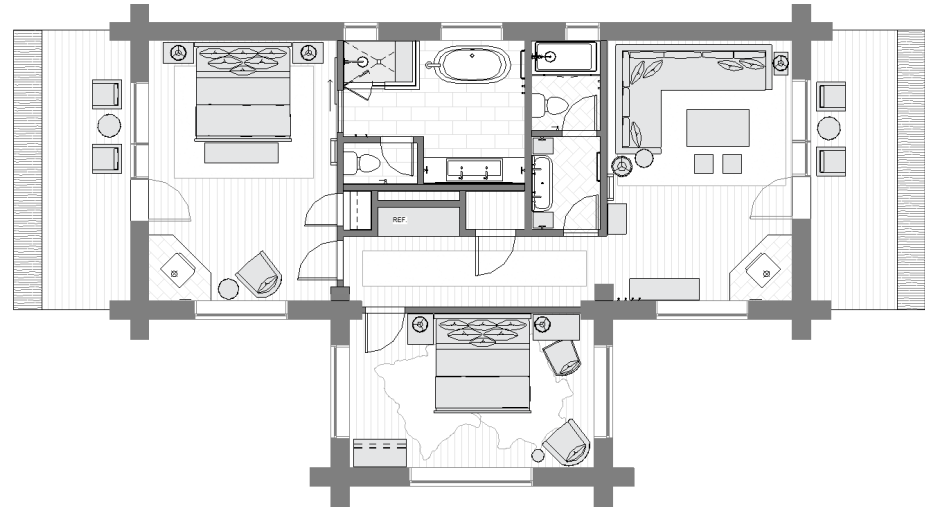


# Aspen

2 BEDROOMS | 2 BATHROOMS | SLEEPS 6

This cozy cabin nestled on the knoll overlooking the ranch is a guest favorite! A master bedroom features a king bed, potbelly stove and master bath with a clawfoot tub and separate shower. A second bedroom includes a king bed and sweeping ranch views. A second full bathroom features tub/shower combination.

A generous living room includes a large sectional couch featuring a king pullout bed, potbelly stove and views of swaying colorful Aspen trees.



[LONEMOUNTAINRANCH.COM/CABINS](http://lonemountainranch.com/cabins)



# Shooting Star

2 BEDROOMS | 2 BATHROOMS | SLEEPS 6

Shooting Star is the perfect cabin for a small family. This cabin features a master bedroom with a king bed and potbelly stove with en suite bathroom including soaking tub and separate shower. The master bedroom also includes a private porch overlooking the North Fork Creek. Cozy twin bunkbeds and full guest bath just outside the master are perfect for children of any age. A well-appointed cozy living room includes a comfortable pull out couch , pot belly stove, and porch with ranch views.



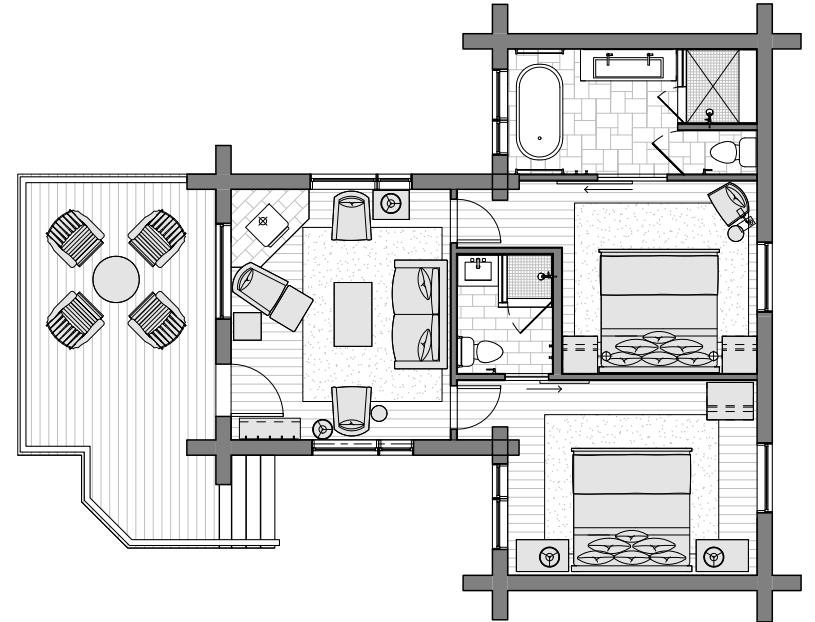
[LONEMOUNTAINRANCH.COM/CABINS](http://LONEMOUNTAINRANCH.COM/CABINS)



# Bighorn

2 BEDROOMS | 2 BATHROOMS | SLEEPS 6

Located above the North Fork Creek, The Bighorn cabin is a rustic dream come true. Guests can relax on the wooden deck or in the living room beside the authentic wood stove. This cabin features two bedrooms — each with a king bed and one room with a full bath and the other with a soaking tub.



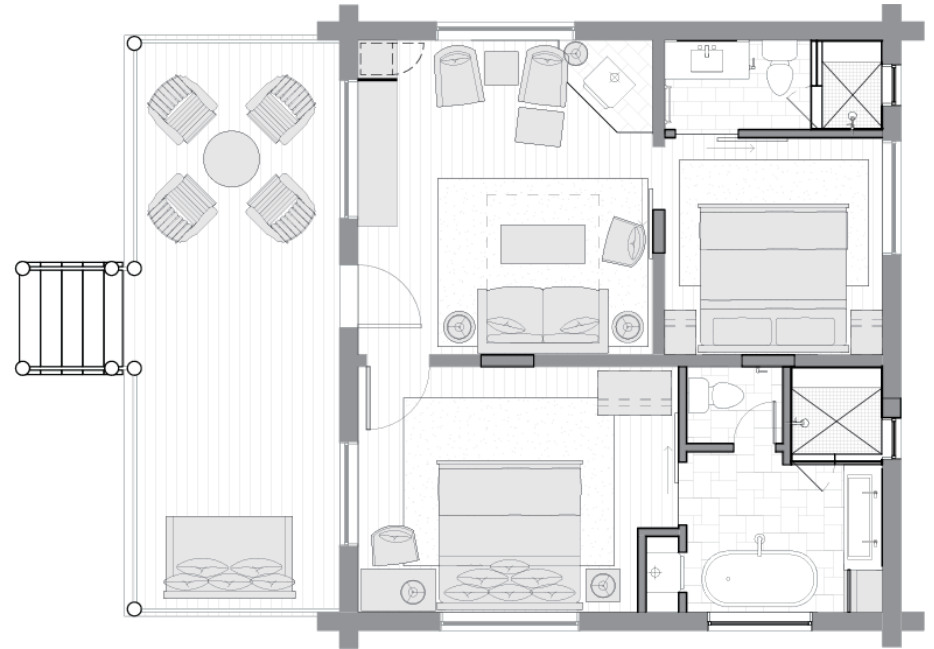
[LONEMOUNTAINRANCH.COM/CABINS](https://lonemountainranch.com/cabins)



# Coyote

2 BEDROOMS | 2 BATHROOMS | SLEEPS 6

The Coyote's two bedrooms (each with a king bed and bathroom) and living room are perfect for a family or small group outing. Coyote also offers a pull out sofa sleeper. Admire the mountains and stream from the covered porch or spend quality time in the sitting area in the natural light, beside the wood stove.



[LONEMOUNTAINRANCH.COM/CABINS](http://lonemountainranch.com/cabins)

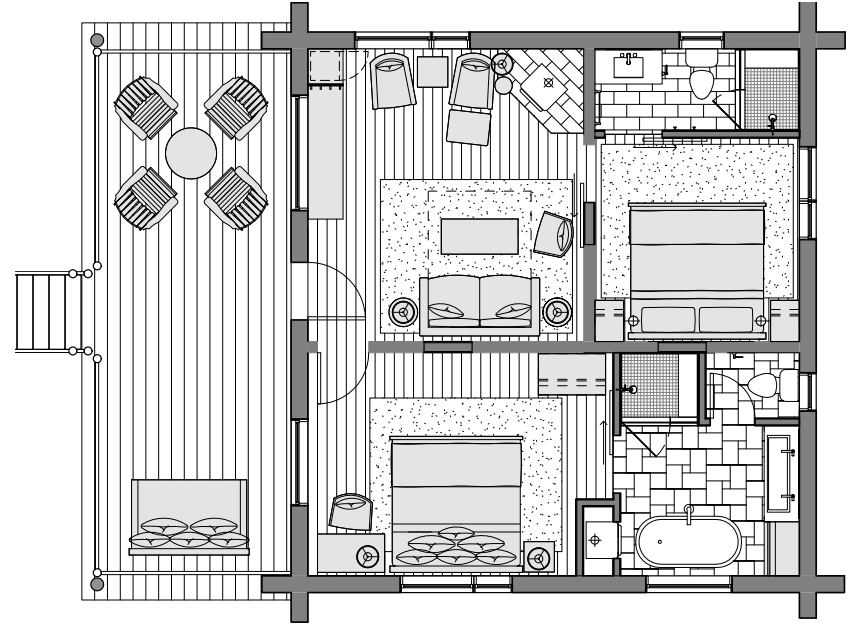


# Larkspur

2 BEDROOMS | 2 BATHROOMS | SLEEPS 6

Larkspur cabin (named after a summer-blooming wildflower) features an expansive porch that's perfect for quality family time or cozying up alone with a good book and a blanket. Inside, guests can unwind in the spacious living room nestled aside the wood stove. This cabin features two bedrooms each with a king bed and full bathroom.

*The living room sofa can be made up to a bed.*



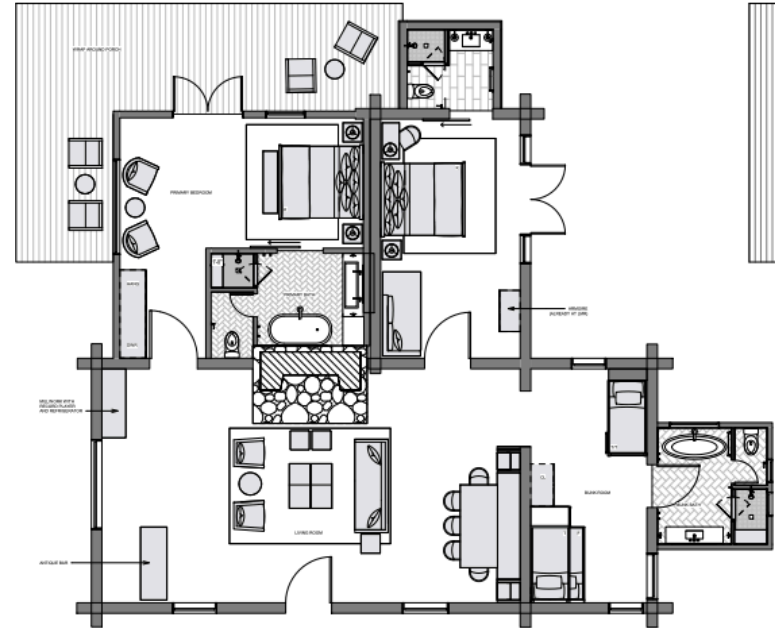
[LONEMOUNTAINRANCH.COM/CABINS](https://lonemountainranch.com/cabins)



# B-K

2 BEDROOMS | 1 BUNK ROOM | 2 BATHROOMS | SLEEPS 6

B-K (pronounced B-Bar-K) Built in 1936, B-K is one of our most historic cabins and has served many functions over the last century including use as a schoolhouse, central ranch dining room and a wellness center. This re-imagined luxurious lodge includes two private suites with king-sized beds and en-suite bathrooms, bunk room with three twin beds and a full-size bed in addition to a private bath with bathtub as well. Guests will enter into an expansive open living space with an oversized fireplace and a large dining table. Enjoy scenic views from your private wrap around porch overlooking North Fork Creek. Centrally located on the property, it is just a short walk from our restaurant and activity center.



[LONEMOUNTAINRANCH.COM/CABINS](http://lonemountainranch.com/cabins)



# Houses

DOUGLAS FIR HOUSE  
RIDGETOP LODGE



[LONEMOUNTAINRANCH.COM/CABINS](http://LONEMOUNTAINRANCH.COM/CABINS)

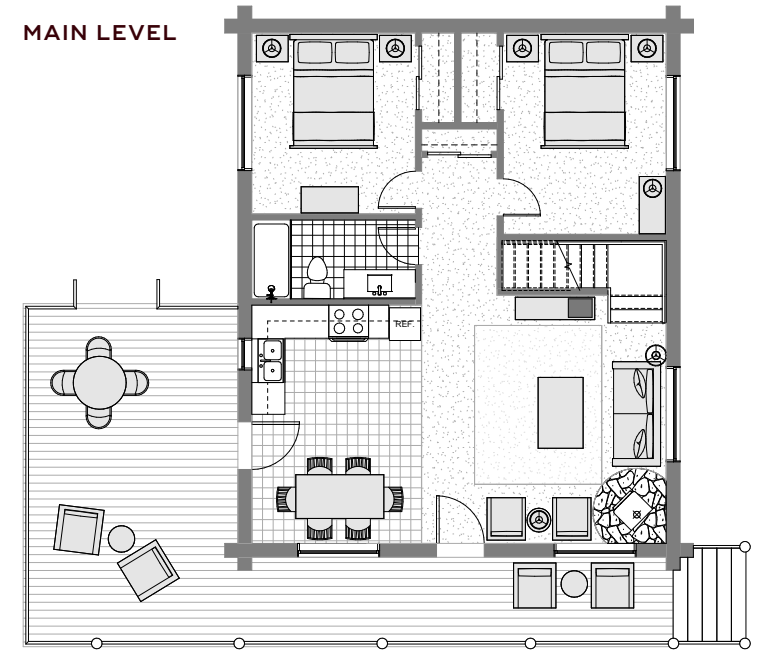




# Douglas Fir House

3 BEDROOMS | 2 BATHROOMS | SLEEPS 8

The spacious Douglas Fir House features expansive views of Lone Peak and the surrounding mountains. This lodge is a guest favorite due to its balance of convenience, function, and comfort. This cozy cabin can sleep a large family or group with 2 rooms with queen beds, a family suite downstairs with a queen and 2 twin beds, and an open loft with 2 twin beds.



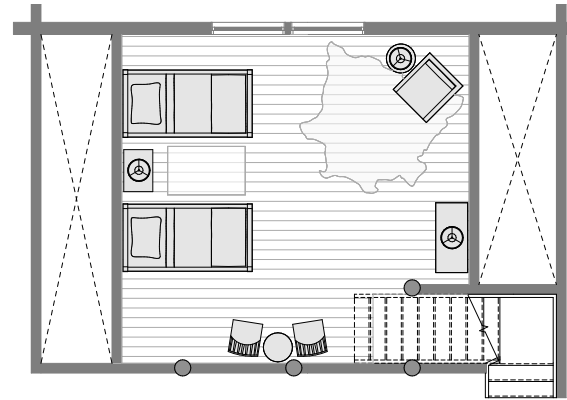
[LONEMOUNTAINRANCH.COM/CABINS](https://lonemountainranch.com/cabins)



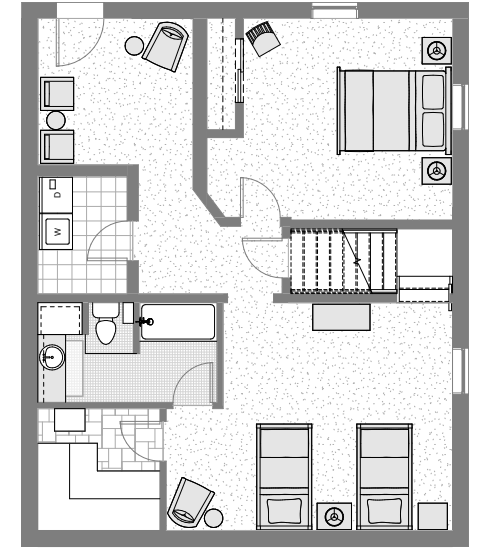
# Douglas Fir House

3 BEDROOMS | 2 BATHROOMS | SLEEPS 8

The spacious Douglas Fir House features expansive views of Lone Peak and the surrounding mountains. This lodge is a guest favorite due to its balance of convenience, function, and comfort. This cozy cabin can sleep a large family or group with 2 rooms with queen beds, a family suite downstairs with a queen and 2 twin beds, and an open loft with 2 twin beds.



LOFT



BASEMENT



[LONEMOUNTAINRANCH.COM/CABINS](http://lonemountainranch.com/cabins)

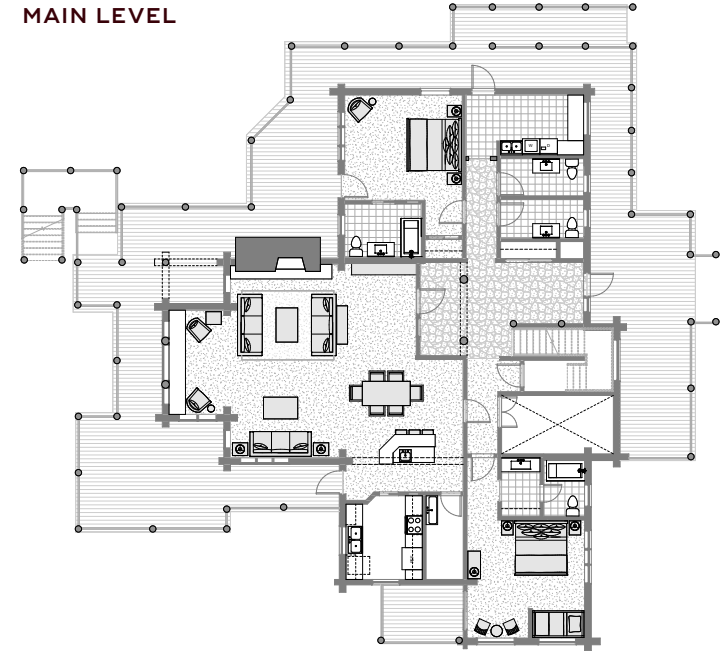


# Ridgetop Lodge

6 BEDROOMS | 6 BATHROOMS | SLEEPS 18

Ridgetop Lodge has six private bedrooms, each of which sleep up to three guests. The great room boasts a coveted view of Lone Peak, making Ridgetop ideal for corporate groups, small meetings, or family reunions. The Ridgetop Lodge also features two fireplaces, an outdoor deck, hot tub, pool table, cable tv, wifi, full kitchen, laundry, and a host of other amenities.

MAIN LEVEL



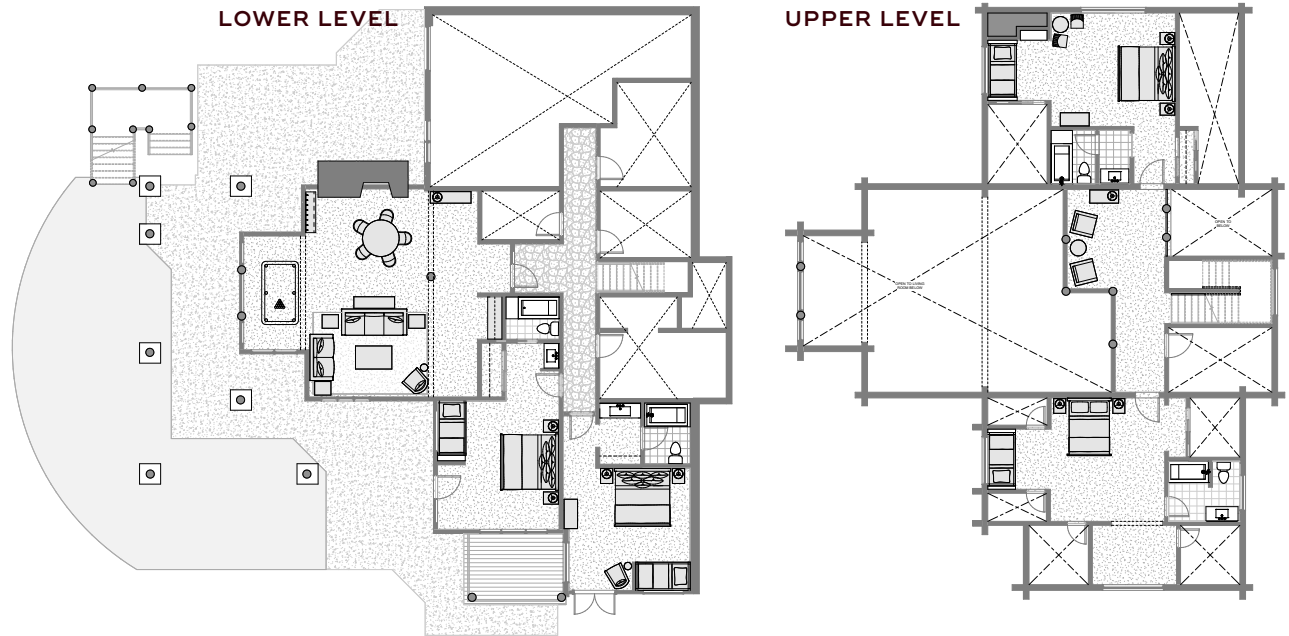
[LONEMOUNTAINRANCH.COM/CABINS](http://lonemountainranch.com/cabins)



# Ridgetop Lodge

6 BEDROOMS | 6 BATHROOMS | SLEEPS 18

Ridgetop Lodge has six private bedrooms, each of which sleep up to three guests. The great room boasts a coveted view of Lone Peak, making Ridgetop ideal for corporate groups, small meetings, or family reunions. The Ridgetop Lodge also features two fireplaces, an outdoor deck, hot tub, pool table, cable tv, wifi, full kitchen, laundry, and a host of other amenities.



[LONEMOUNTAINRANCH.COM/CABINS](http://lonemountainranch.com/cabins)