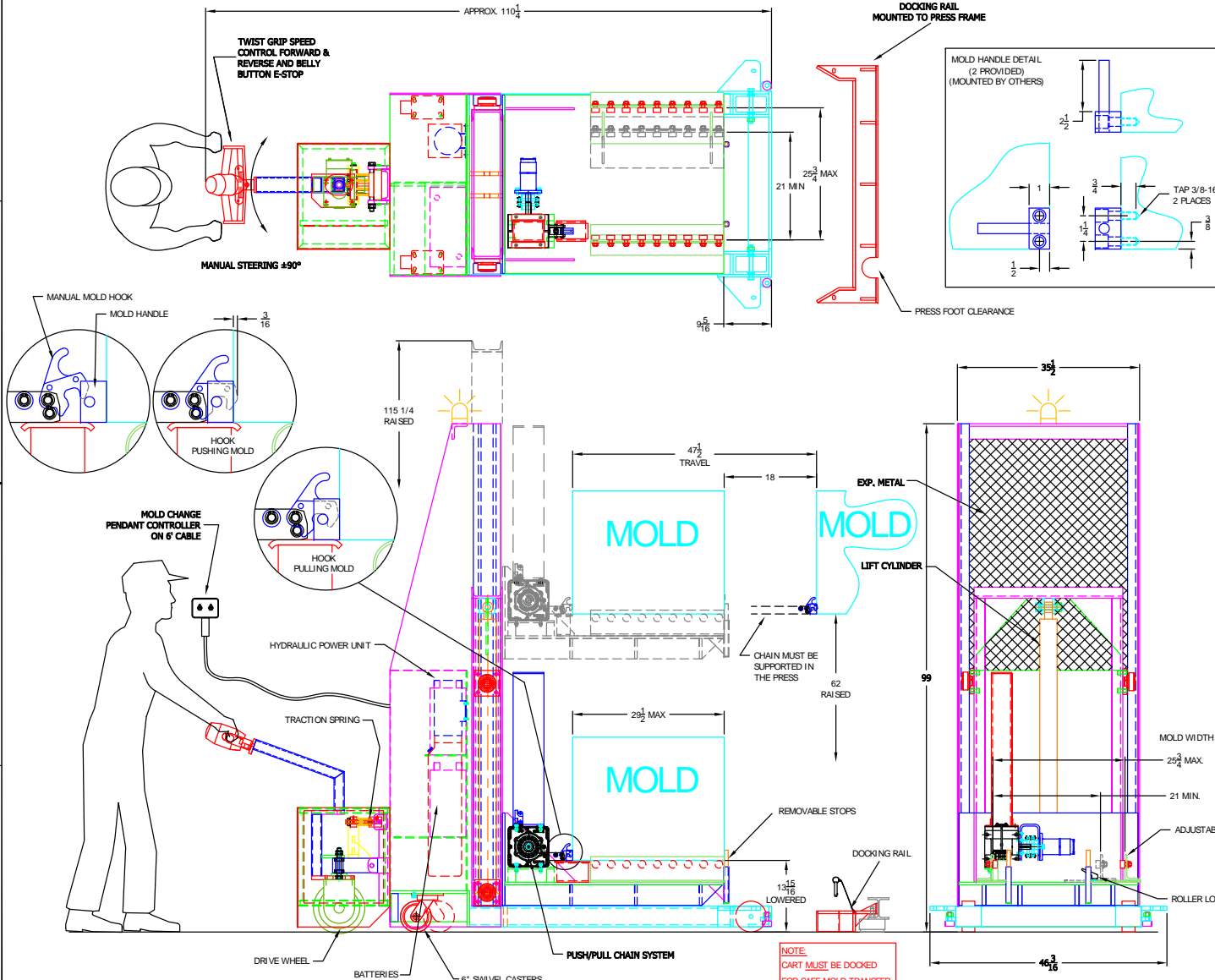
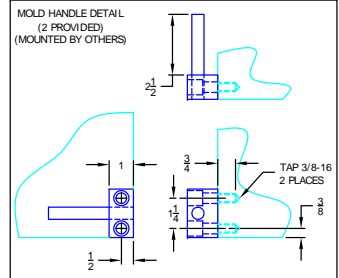


ZONE	REV.	DESCRIPTION	DATE	REV. BY	APP. BY
XX	A	CHANGE DOCKING RAIL DESIGN	02/12	NH	NH



NOTE:
CART MUST BE DOCKED
FOR SAFE MOLD TRANSFER.

DOCKING RAIL
MOUNTED TO PRESS FRAME



OPERATOR SIDE MOLD CHANGE CART

- 4000 lb. Titan Mold/Die Cart Features:**
- configuration: single station mold/die cart with variable height deck, and optional powered tiller drive and push/pull systems
 - frame: structural steel weldments
 - capacity: 4000 lb.
 - vehicle drive: GVMI electric tiller drive
 - load wheels: rigid casters at transfer end, swivel casters at push handle end
 - load deck: gravity rollers for low friction tool transfers
 - load deck size: 21" L-R X 28" F-B
 - overall cart size: 48 3-16" wide X 101-3/4" long
 - transfer height range: 12" to 60" above the floor
 - transfer system: powered rigid chain system for mold transfers
 - tool stop: barrier with pins to engage sockets at transfer end of deck
 - cart retention at press/rack: floor mounted docking rail (one supplied)
 - lift system: mast driven by hydraulic cylinder
 - lift control: pendant
 - lift speed: 2" per second raise and lower
 - power: 24 VDC via 185 amp-hr battery
 - battery charge gauge: analog meter showing charge level

ITEM	QTY	PART NO.	DESCRIPTION	MATERIAL	LOTR.	WT.
BILL OF MATERIALS						
FIRST MADE FOR MILACRON		DATE 02/02/12	SCALE 1=10	SIZE D	UNLESS OTHERWISE SPECIFIED DIMENSIONS ARE IN INCHES TOLERANCES ARE: FRACTIONS DECIMALS ANGLES XXX .0005 .0005 .010	
Part REGAL YELLOW			4000 lb MOLD CART APPROVAL DRAWING			
Job Number 2898			DWG. NO. APR2898A		REV. A	
DO NOT SCALE DRAWING			TYP. WT. XXX LBS. CONT. WT.			