

Model M-STLK & M-ATLK - Trim Line, Adjustable Angle, Steel or Aluminum

Steel Frame flat-to-Incline, Cleated Belt Conveyor - *M-STLK Model*

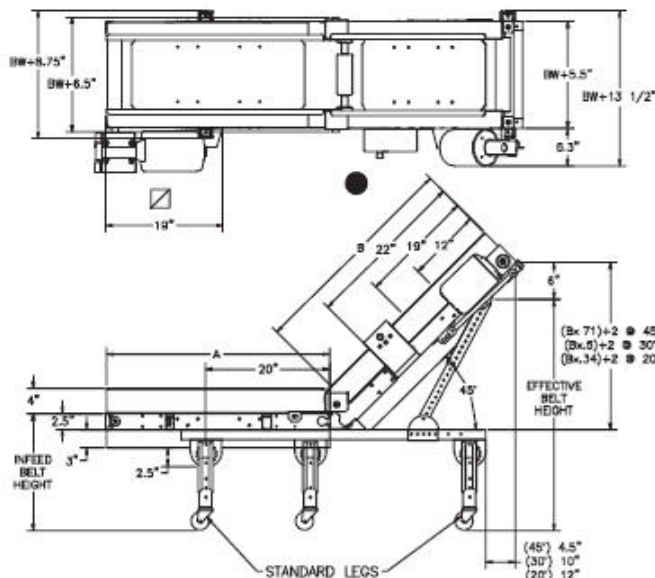
Aluminum Frame flat-to-Incline, Cleated Belt Conveyor - *M-ATLK Model*

Standard Features

- Direct Drive ¼ hp 90V DC Variable Speed Drive package.
- No roller chain or sprockets.
- Sealed gear reducer.
- 50 lbs. maximum load.
- 12 gauge steel construction.
- 2" high side rails, lapped over conveyor belt.
- Double V-guided, FDA approved, white PVC belt with 1½" high cleats on 18" centers.
- Leg sets (legs supplied are set at a 45° incline from floor - specify belt height) and swivel castors included.
- 15' power cord included. Pre-wired ready-to-run (except polyphase systems which require some customer wiring).
- Control wiring contained in liquid-tight conduit and connectors.
- Units up to 10' length ship fully assembled.

Lengths:

Minimum infeed length 2 ft.
 Minimum discharge length 2 ft.
 Infeed plus discharge lengths can not exceed 15 ft.
 Additional lengths available in 1ft. increments.



- BW = Belt width.
- Standard starter position (specify if other location).
 - ☒ Drive location for 24' & 30' models is on infeed end. 11' min. infeed belt height w/standard legs and castors.

Combined Length - up to 15'

Belt Width				
6'	9'	12'	18'	24'