

Model M-ADK - Merit Line, Aluminum Frame, Flat to Incline Conveyor

Standard Features

- Angle adjustment - 20° to 45°.
- **Direct Drive** 1/3 HP 110/60/1 C-Faced Drive package (80 FPM uses 1/2 HP Drive Pak).
- **No roller chain or sprockets.**
- **Sealed gear reducer.**
- 50 lbs. maximum load.
- 1/8" anodized aluminum sheet.
- Double V-guided, FDA approved, white PVC belt with 1 1/2" high cleats on 18" centers.
- 4" high side rails, lapped over conveyor belt.
- **Leg sets** (Adjustable up to 34" infeed belt height - specify infeed and discharge belt heights) **and swivel castors included.**
- 15' power cord included. Pre-wired ready-to-run (except polyphase systems which require some customer wiring).
- Control wiring contained in liquid-tight conduit and connectors.
- All units ship fully assembled.

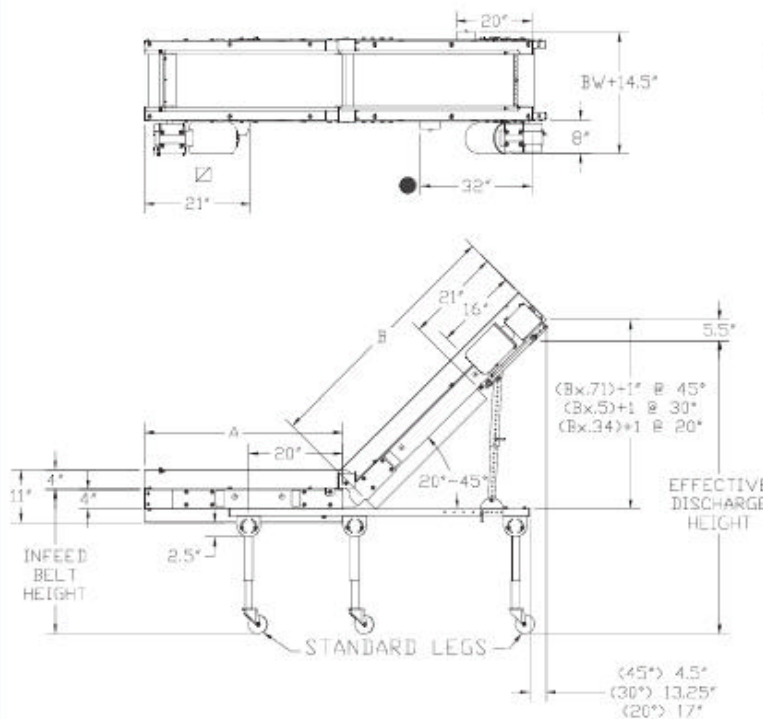
Weights up to 48% less than comparable models of steel frame conveyors.



M-ADK shown with standard leg sets and swivel castors.

Combined Lengths - 5' to 15'

Belt Widths					
6"	9"	12"	18"	24"	30"



- BW = Belt width.
- Standard starter position (specify if other location).
- ☑ Drive location for 24" & 30" models is on infeed end. 11" min. infeed belt height w/standard legs and castors. Horsepower charts are on page 18.

