



VERTICAL INSERT INJECTION MOLDING MACHINES

28 mm SPECIFICATIONS

MAGNA V80

Injection Unit Specifications

Injection Capacity Max.	English	a	b	c	Metric	a	b	c
Screw diameter	in	1.10	1.26	1.42	mm	28	32	36
GP Styrene	ozs	2.27	2.97	3.76	g.	64.44	84.16	106.5
Displacement	in ³	4.13	5.40	6.83	cm ³	67.73	88.46	112.0
Injection Hyd. Pressure, Max	psi	1,800	2,450	2,450	bar	124	169	169
Injection Melt Pressure, Max	psi	30,000	22,980	18,156	bar	2,068	1,584	1,252
Injection Rate	in ³ /sec	3.77	4.92	6.23	cm ³ /sec	61.78	80.62	102.09
Screw Stroke	in	4.33	4.33	4.33	mm	110	110	110
Screw L/D (xx:1)		23:1	20:1	18:1		23:1	20:1	18:1
Screw Performance								
At screw pressure	@psi	2,475	2,475	2,475	@bar	171	171	171
Torque at Screw	in-lb	2,100	3,775	3,775	Nm	237.3	426.6	426.6
Screw speed	rpm	350	170	170	rpm	350	170	170
Barrel Heat Control								
Number of Pyrometers (Barrel/Nozzle)		3/1	3/1	3/1		3/1	3/1	3/1
Total Heat Capacity	kW	6.4	6.4	6.4	kW	6.4	6.4	6.4

32 AND 40 mm SPECIFICATIONS

Injection Unit Specifications

Injection Capacity Max.	English	32 mm			40 mm			Metric	32 mm			40 mm		
		a	b	c	a	b	c		a	b	c	a	b	c
Screw diameter	in	1.26	1.42	1.65	1.57	1.77	1.97	mm	32	36	42	40	45	50
GP Styrene	ozs	3.51	4.44	6.04	7.6	9.6	11.9	g.	99.47	125.89	171.4	215.5	272.2	337.4
Displacement	in ³	6.38	8.07	10.99	13.80	17.47	21.57	cm ³	104.6	132.3	180.1	226.1	286.3	353.5
Injection Hyd. Pressure, Max	psi	2,400	2,400	2,400	2,050	2,540	2,540	bar	166	166	166	142	175	175
Injection Pressure, Max	psi	30,000	23,688	17,424	26,900	21,320	17,270	bar	2,068	1,634	1,201	1,861	1,470	1,191
Injection Rate	in ³ /sec	3.69	4.67	6.36	7.26	9.19	11.32	cm ³ /sec	60.47	76.53	104.22	118.97	150.27	185.5
Screw Stroke	in	5.12	5.12	5.12	7.09	7.09	7.09	mm	130	130	130	180	180	180
Screw L/D (xx:1)		23:1	20:1	17:1	23:1	20:1	18:1		23:1	20:1	17:1	23:1	20:1	18:1
Screw Performance														
At screw pressure	psi	2,475	2,500	2,500	2,500	2,500	2,500	bar	171	172	172	172	172	172
Torque at Screw	in-lb	3,775	4,600	4,600	5,450	7,100	9,150	Nm	426.6	519.8	519.8	615.8	802.3	1,034
Screw speed	rpm	170	130	130	300	230	180	rpm	170	130	130	300	230	180
Barrel Heat Control														
Number of Pyrometers (Barrel/Nozzle)		3/1	3/1	3/1	3/1	3/1	3/1		3/1	3/1	3/1	3/1	3/1	3/1
Total Heat Capacity	kW	7.0	7.0	7.0	12.7	12.7	12.7	kW	7.0	7.0	7.0	12.7	12.7	12.7

Clamping Unit Specifications

	English	28 - 32 - 40 mm	Metric	28 - 32 - 40 mm
Maximum mold size	in	12 x 18	mm	304.8 x 457.2
Clamp force	ton	80	kN	72.7
Maximum ejector stroke	in	1.97	mm	50
Maximum clamp stroke	in	14.5	mm	368
Minimum mold height	in	7.5	mm	190.5
Maximum daylight	in	22.0	mm	558.8

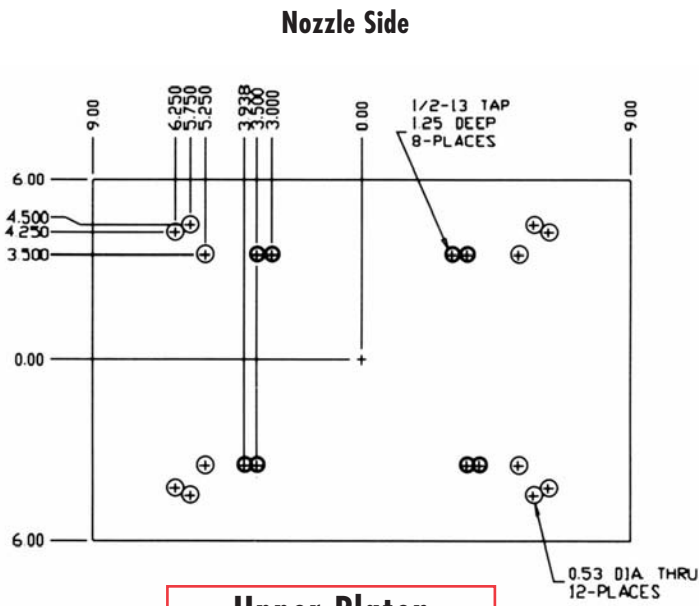
Machine Specifications

	English	28 - 32 - 40 mm	Metric	28 - 32 - 40 mm
Hopper capacity	in ³	990	cm ³	16,226
Hydraulic reservoir capacity	gal	50	ltr	187.50
Primary pump capacity	gpm	12 - 20	lpm	45.42 - 75.71
Secondary pump capacity	gpm	5	lpm	18.93
Motor (1750 rpm)	hp	20 - 30	kW	14.91 - 22.37
Machine voltage	V, Hz, Ph	460, 60, 3	V, Hz, Ph	460, 60, 3
Parting line range	in	4.5 - 10.5	mm	114.3 - 266.7

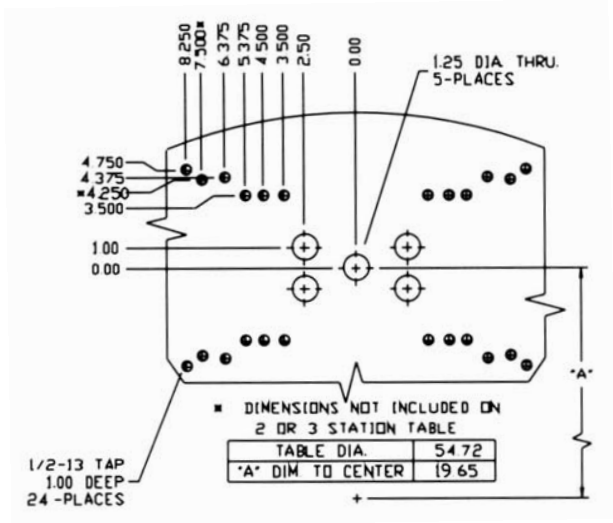
General Specifications

	English	Shuttle	Rotary	Metric	Shuttle	Rotary
Table	in	26.45 Stroke	54.72 (D)	mm	672 Stroke	1390 (D)
Overall dimensions (L x W x H) (est)	in	105 x 104 x 97	144 x 67 x 97	mm	2,667 x 2,642 x 2,464	3,658 x 1,702 x 2,464
Shipping weight (est)	lb	11,500	12,000	kg	5,216	5,443

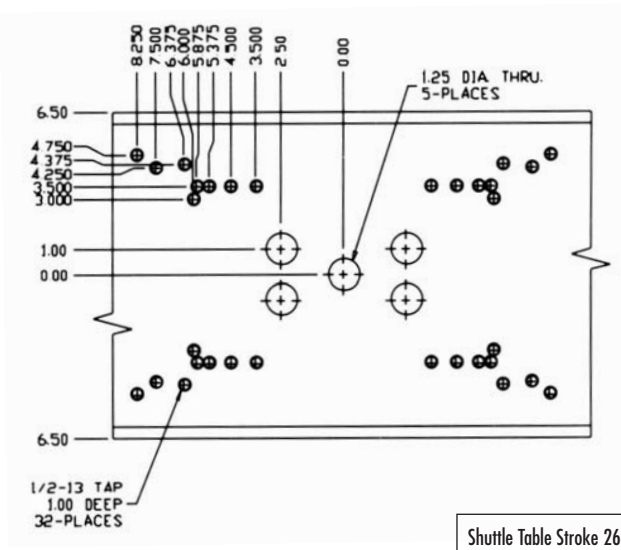
MAGNA V80



Upper Platen



Rotary



Shuttle Table Stroke 26.45"

Shuttle, Stationary

All specifications reflect average values based on typical machine layouts. Actual figures will vary depending on final machine configuration. If you require more specific data, consult a certified installation print for your particular machine. Performance specifications are based on theoretical data. Due to continual improvements, specifications are subject to change without notice.