

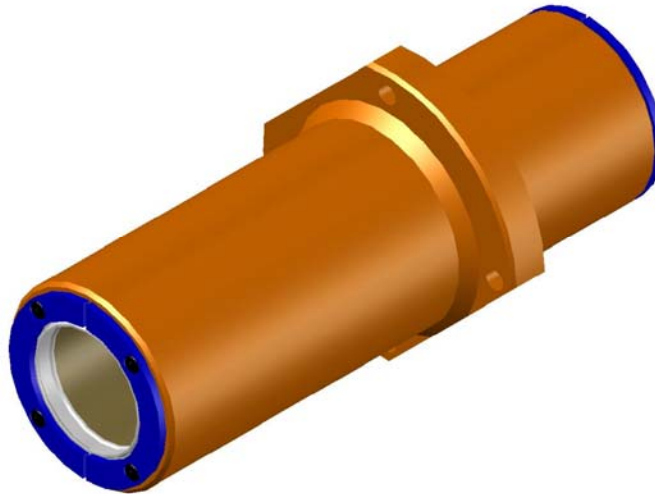
GET PRECISE CLAMP LOCKUP WITH SUPERIOR BUSHING LIFE USING UNILOY'S NEW "CLAMP PRO" TIE BAR BUSHING ASSEMBLIES!

Uniloy is proud to introduce this month's web posting featuring our new and improved "Clamp Pro" tie bar bushing assemblies. The "Clamp Pro" assemblies are available in 2", 2.5", and 3" diameters, which mean they can be installed in place of the existing bushing assemblies in any size Uniloy clamp.

Since the purpose of the clamp mechanism is to locate and hold the molds together securely while the molded product is being blown, precision clamp motion is a necessity. "Clamp Pro" bushing assemblies provide this precise clamp movement with the added benefit of extended lives for the molds and clamp components.

"Clamp Pro" Enhancements Include:

- **Bushing Retainers;** designed to accept longer bushings and wiper seals
- **Extended Length Bushings;** for more bearing contact and clamping precision. Available with bronze or composite bushing material for built in versatility
- **Wiper Seals and Seal Retainers;** to ensure longer bushing life



Why Replace Your Existing Tie Bar Bushings With “Clamp Pro”?

- The advanced technology of “Clamp Pro” provides up to twice the life expectancy compared to a standard, non-sealed, bronze bushing.
- “Clamp Pro” provides precision clamp movement which extends the life of your mold pins and bushings as well as other clamp wear items such as toggle pins and needle bearings.
- Wiper Seals keep the grease inside the bushing housing where it belongs. This means less mess, and a cleaner clamp.
- “Clamp Pro” bushing assemblies are a direct replacement for your existing bushing assemblies. Just unbolt the old bushing retainer, install the new assembly, and away you go.

Why Replace Your Existing Bronze Tie Bar Bushings With “Clamp Pro” Composite Bushings?

Uniloy “Clamp Pro” composite bushings are specially designed for improved durability which means your clamp maintains “like new” tolerances longer, for superior mold performance. These new bushings are manufactured from special composite bushing material designed for extended wear. The bushings in a “Clamp Pro” assembly are longer than the old standard bronze bushing providing more bearing surface area. Longer bushings are provided with either the composite or bronze bushing option. Composite bushings will provide:

- Improved clamping precision
- Reduced wear on mold pins and bushings
- Reduced pinch off mismatch
- Extended clamp component life

Why Should You Order Your New Bushings Retainers With Wiper Seals?

Wiper seals keep the grease in, and the dirt and contaminants out, extending the life of the bushing material. The life expectancy of either bronze or composite bushings can be extended by as much as two times by eliminating the abrasive effect of unwanted contaminants.

A grease pressure relief device is also provided when the seal option is selected. This device prevents damage or distortion of the seals due to pressure build-up inside the bushing housing.

Choosing the Right Bushing Assembly

The following chart includes the bill of materials (BOM'S) required when ordering. All you need to know is your machine model, and the quantity and diameter of the clamp tie bars.

BUSHING ASSEMBLY BOM'S			
SIZE	BRONZE BUSHINGS	COMPOSITE BUSHINGS	SEAL BOM'S
2.0"	10985990	10985991	10986007
2.5"	10985995	10985996	10986008
2.5" UR	10985992	10985994	
3.0"	10985997	10985999	10986009
3.0" UR	10986001	10986003	

Choose the right bushing assemblies by selecting the row associated with your tie bar diameter. The sizes followed by a "UR" are R2000 (or UR) series machines. Next choose the bill of material for the bushing type you would like, bronze or composite. The last step is to choose the seal BOM associated with your size bushing. The parts included in one BOM are enough for one bushing assembly.

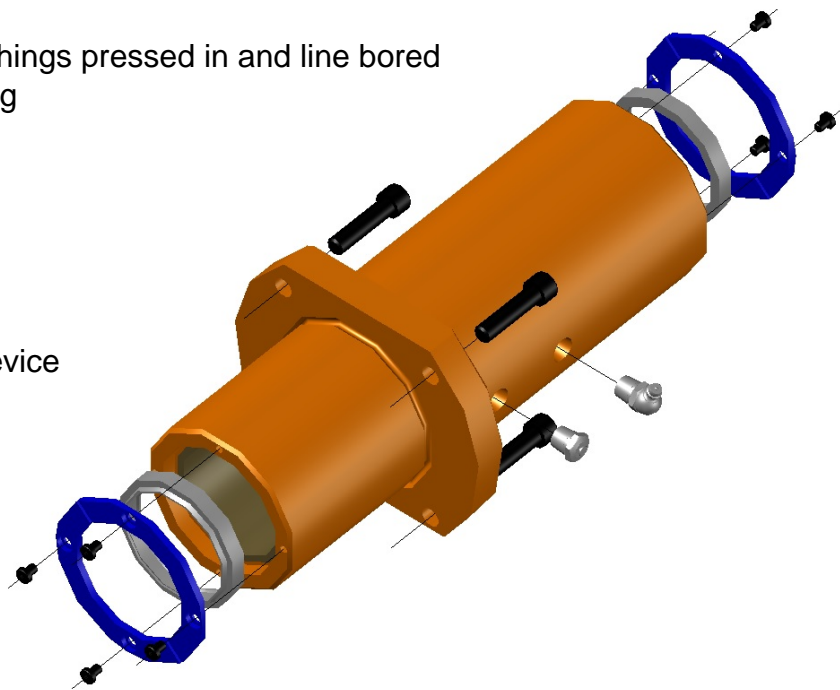
"Clamp Pro" packages include:

Bronze or Composite Bushing Assemblies

- Bushing retainers
- Bronze or composite bushings pressed in and line bored
- Grease zerk and pipe plug
- Mounting fasteners

Seals Kits Include

- Wiper seals
- Seal retainers
- Grease pressure relief device
- Mounting fasteners



A Note about Tie Bars

It is strongly recommended that your existing tie bars be inspected for wear and replaced if necessary. The effectiveness of new bushings on clamping precision depends on tie bars that are within original tolerance specifications. This is most important in the area where the bushing travels over the tie bar. The following chart provides original dimensional specs.

NOMINAL SIZE	TOLERANCE (INCHES)
2.0"	2.0000/1.9985
2.5"	2.5000/2.4985
3.0"	3.0000/2.9985

Sales and Service and Engineering

For more information including pricing on "Clamp Pro" Tie Bar Bushing assemblies, new tie bars, or any other machine upgrade, please contact your local Uniloy Parts Sales Representative. Trained Uniloy Service Representatives are available to assist in the installation of these packages at your facility. All Uniloy retrofit packages are engineered to suit your individual machine specifications. Complete engineering documentation including assembly drawings, parts lists, and schematics are always included.