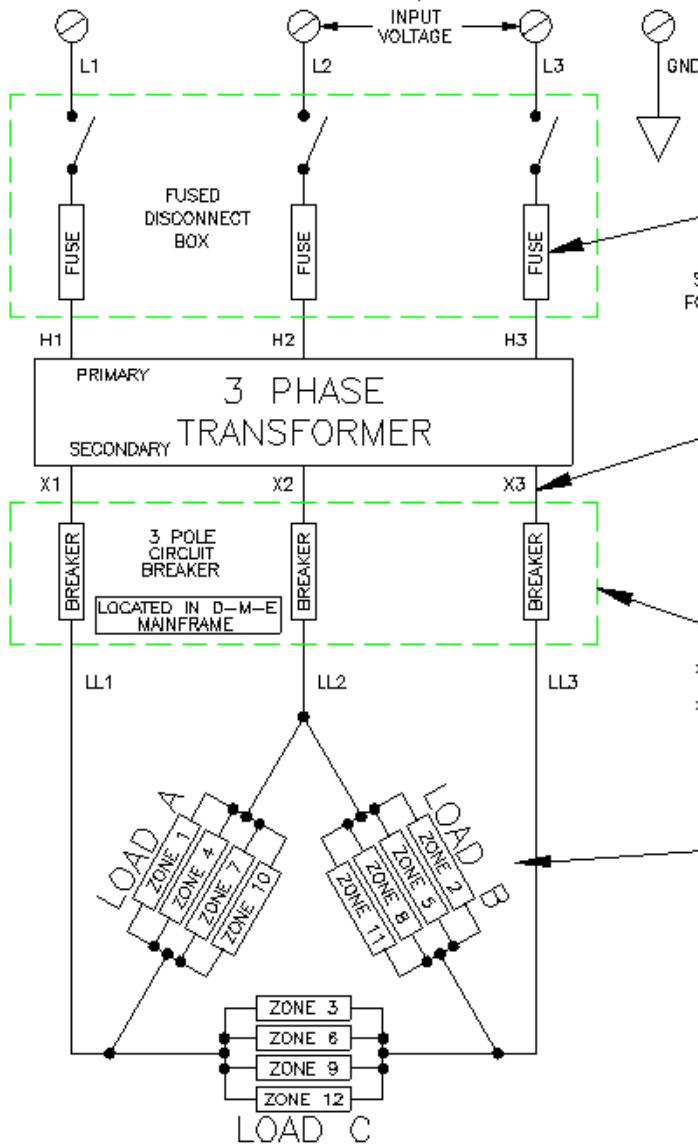


# D-M-E TRANSFORMER APPLICATIONS CURRENT/POWER SPECIFICATIONS (OPTION A)



PRIMARY CURRENT DRAW IN AMPS FOR VARIOUS 3 PHASE TRANSFORMERS (AT H1, H2, OR H3)

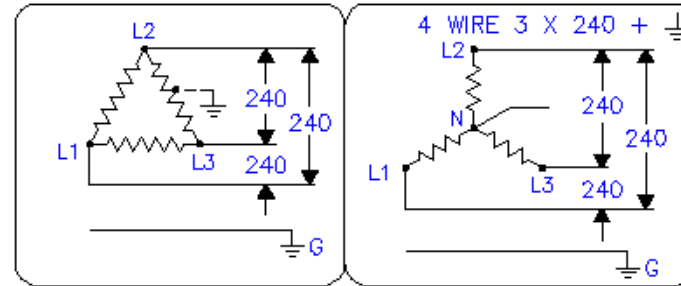
3 PHASE TRANSFORMER	INPUT VOLTAGE TO DISCONNECT									
	208 VAC		240 VAC		380 VAC		480 VAC		580 VAC	
	SPEC AMPS	FUSE AMPS	SPEC AMPS	FUSE AMPS	SPEC AMPS	FUSE AMPS	SPEC AMPS	FUSE AMPS	SPEC AMPS	FUSE AMPS
6 KVA	18.6	20	14.4	20	9.1	10	7.2	9	6.0	8
9 KVA	25.0	30	21.6	25	13.6	15	10.8	12	9.0	10
15 KVA	41.8	45	36.1	40	22.7	25	18.0	20	14.9	20
22.5 KVA	62.4	70	54.1	60	34.1	40	27.0	30	22.3	25
30 KVA	83.2	90	72.2	90	45.5	50	36.1	40	30.0	35
45 KVA	124.9	125	108.2	125	68.3	70	54.1	60	44.8	50

CALL D-M-E FOR TRANSFORMER AVAILABILITY

SECONDARY CURRENT DRAW IN AMPS FOR VARIOUS 3 PHASE TRANSFORMERS (AT X1, X2, OR X3)

3 PHASE TRANSFORMER	240 VAC SPEC AMPS
6 KVA	14.4
9 KVA	21.6
15 KVA	36.1
22.5 KVA	54.1
30 KVA	72.2
45 KVA	108.2

TRANSFORMER SECONDARY POWER TO D-M-E MAINFRAME INPUT



OPTION A  $\square$  3 $\phi$

CIRCUIT BREAKER RATING

CIRCUIT BREAKER	MAXIMUM CURRENT PER CONDUCTOR
50 AMP	50 AMP
70 AMP	70 AMP
100 AMP	100 AMP

\*\*\* SPECIAL ON NON-STACK FRAMES  
\*\*\* SPECIAL ORDER ONLY

LOAD SPECIFICATIONS (240 VAC)

240 VAC TRANSFORMER	CIRCUIT BREAKER	AVAILABLE AMPS AT LL1, LL2, OR LL3	MAX. LOAD CURRENT AT 240 VAC (AMPS) OF A, B, OR C	MAX. LOAD POWER AT 240 VAC (WATTS) OF A, B, OR C	TOTAL LOAD POWER (WATTS) OF A + B + C
6 KVA	50 AMP	14.4	8.3	2,000	6,000
9 KVA	50 AMP	21.6	12.4	3,000	9,000
15 KVA	50 AMP	36.1	20.8	5,000	15,000
22.5 KVA	50 AMP	50	28.8	6,928	20,784
30 KVA	70 AMP	70	40.4	9,699	29,098
45 KVA	100 AMP	100	57.5	13,856	41,589

\* REQUIRES SPECIAL HEAVY DUTY MAIN FRAME STAND

### AMP DRAW

LOAD CURRENT A = ZONE 1 AMPS + ZONE 4 AMPS + ZONE 7 AMPS + ZONE 10 AMPS  
 LOAD CURRENT B = ZONE 2 AMPS + ZONE 5 AMPS + ZONE 8 AMPS + ZONE 11 AMPS  
 LOAD CURRENT C = ZONE 3 AMPS + ZONE 6 AMPS + ZONE 9 AMPS + ZONE 12 AMPS

### WATTAGE DRAW

LOAD POWER A = ZONE 1 WATTS + ZONE 4 WATTS + ZONE 7 WATTS + ZONE 10 WATTS  
 LOAD POWER B = ZONE 2 WATTS + ZONE 5 WATTS + ZONE 8 WATTS + ZONE 11 WATTS  
 LOAD POWER C = ZONE 3 WATTS + ZONE 6 WATTS + ZONE 9 WATTS + ZONE 12 WATTS