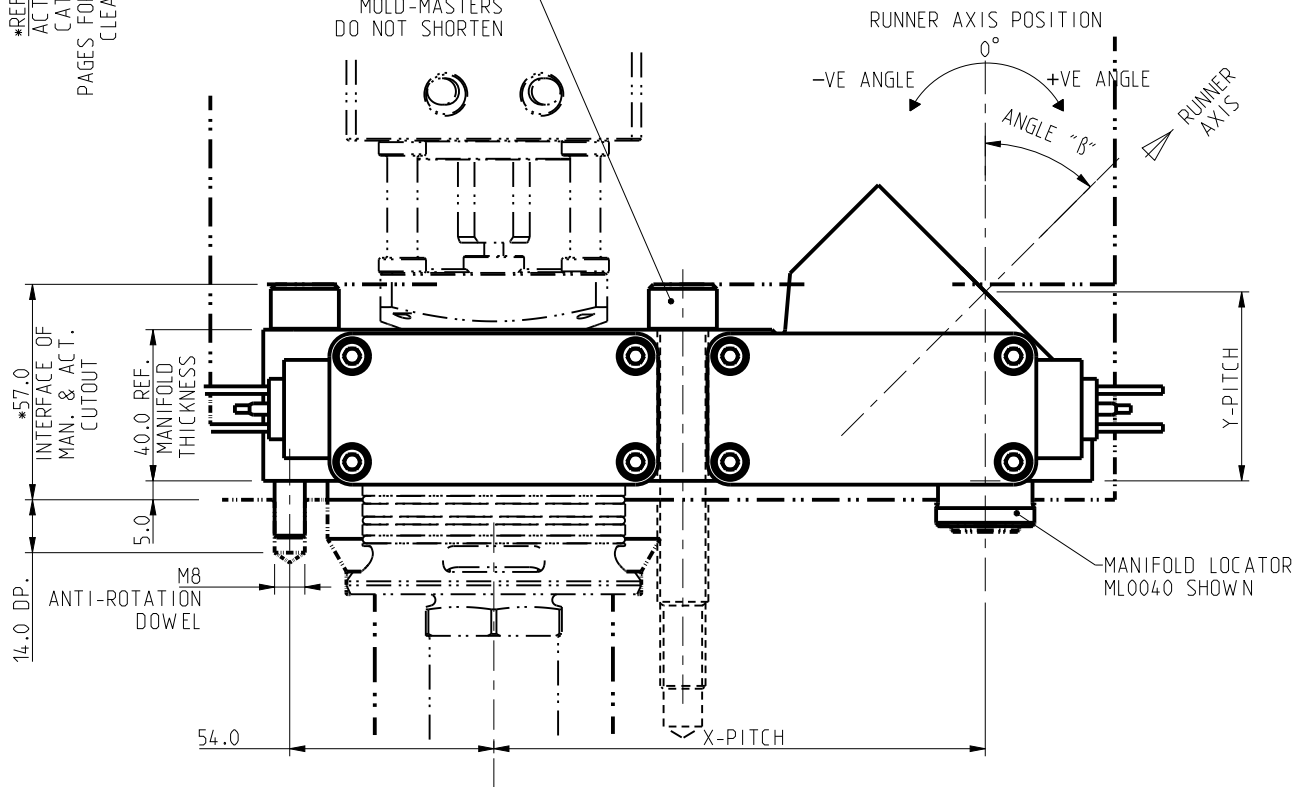


\*REFER TO ACTUATOR CATALOG PAGES FOR MIN. CLEARANCE

4X S.H.C.S. M12X95 (ISO-GRADE 12.9) NOT SUPPLIED BY MOLD-MASTERS DO NOT SHORTEN



ALL DIMENSIONS SHOWN AT PROCESSING CONDITIONS  
+45.0° REGULAR ANGLE "B" SHOWN

ANGLE "B"	REGULAR: +VE ANGLE (MAX. +65°) REVERSE: -VE ANGLE (MIN. -45°)
X-PITCH	ADJUSTED ACCORDING TO ANGLE "B"
Y-PITCH	ADJUSTED ACCORDING TO ANGLE "B"
LENGTH "A"	ADJUSTED ACCORDING TO ANGLE "B"