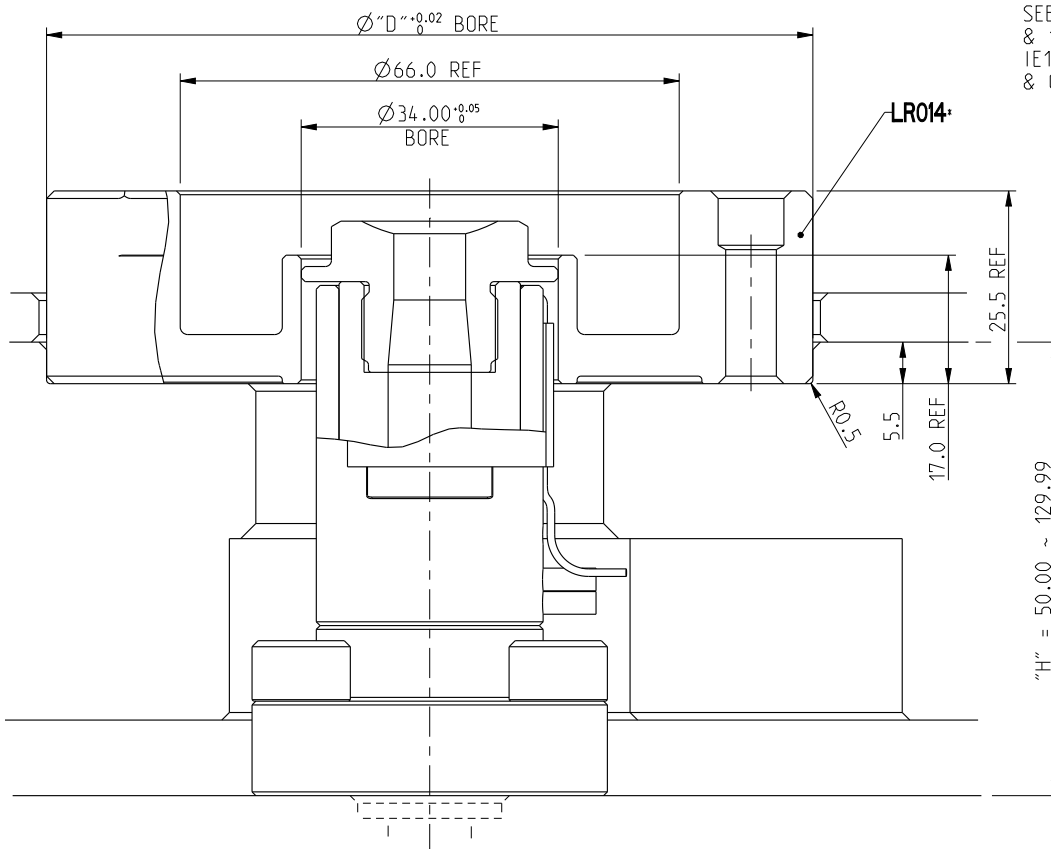


LOCATING RING OPTIONS		
P/N	Ø"D" ^{+0.02} / ₀	USED WITH:
LR0143	Ø101.36	INLET EXTENSIONS IE12*****P1 (FOR "H" = 50.00 ~ 129.99)
LR0144	Ø109.77	
LR0145	Ø99.77	



SEE PAGE 10.01.080
& 10.01.082 FOR
IE12*****P1 CUTOUT
& OPTIONS