

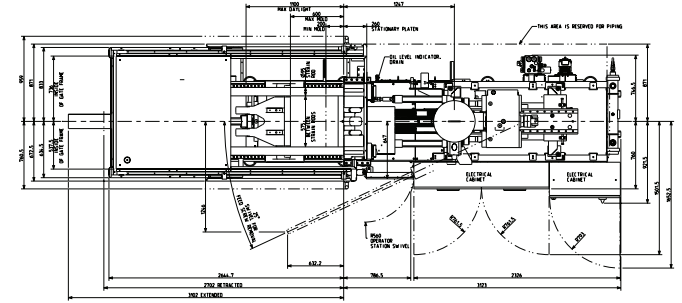
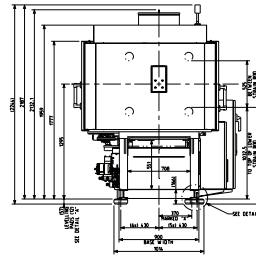
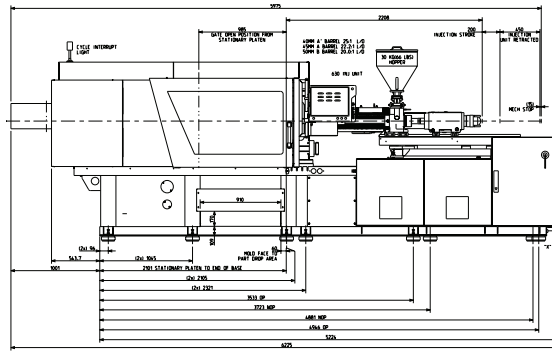


Q-SERIES

Tonnage: 200

**Frame Sizes:
630, 970**

TECHNICAL SPECIFICATIONS



	ENGLISH METRIC	630 Frame			970 Frame		
		A	B	C	A	B	C
General							
Electrical Motor	hp kW		15 11.5			15 11.5	
Total Oil Capacity	gal L		97 365			97 365	
Water Supply (29°C Inlet Temp)	gal/min L/min		13.2 50			13.2 50	
Connected Load	kW		27.2			28.4	
Overall Dimensions (L x W x H)	ft m		20.5 x 6.07 x 7.38 6.25 x 1.85 x 2.25			21.39 x 6.07 x 7.38 6.52 x 1.85 x 2.2	
Machine Weight	lbs kg		16,535 7,500			17,306 7,850	
Injection Unit Specifications							
Injection Capacity, Maximum GPPS	oz gms	8.4 239	10.7 303	13.2 374	12.8 363	15.8 448	22.8 646
Theoretical Displacement	in ³ cm ³	15.3 251	19.4 318	24 393	23.3 382	28.7 471	41.4 679
Maximum Injection Pressure	psi bar	36,100 2,492	28,500 1,969	23,100 1,595	32,600 2,249	29,800 2,057	20,700 1,428
Injection Rate	in ³ /sec cm ³ /sec	6.5 107	8.2 135	10.2 167	6.4 105	7.9 129	11.3 186
Injection Velocity	in/sec mm/sec		3.3 85			2.6 66	
Screw Stroke	in mm		7.9 200			9.4 240	
Back Pressure Limits	psi bar		500 34.5			500 34.5	
Screw Diameter	in mm	1.57 40	1.77 45	1.97 50	1.77 45	1.97 50	2.36 60
Screw L/D Ratio	L/D	25	22.2	20	26.7	24	20
Screw Speed	rpm		222			188	
Screw Torque @172 bar	in-lb Nm		9,800 1,080			11,800 1,305	
Plasticizing Rate (GPPS)	oz/sec gm/sec	0.53 15	0.71 20	1.16 33	0.60 17	0.99 28	1.52 43
Number of Pyrometers (Barrel/Nozzle)	qty		4/1			4/1	
Total Heat Capacity	kW		15.7			16.9	

©2019 Milacron LLC.
All Rights Reserved.
Pub Number: T4.1353.B.02.19

4165 Half Acre Rd.,
Batavia OH 45103
513.536.2000
info@milacron.com
www.milacron.com

		630 Frame			970 Frame		
	ENGLISH METRIC	A	B	C	A	B	C
Clamp							
Clamping Force	ton kN		202 1,800			202 1,800	
Opening Force	ton kN		20 180			20 180	
Clamp Stroke	in mm		19.7 500			19.7 500	
Clamp Close Velocity	in/sec cm/sec		30 75			30 75	
Clamp Open Velocity	in/sec cm/sec		28 70			28 70	
Eject Force (forward)	tons kN		5.6 50			5.6 50	
Eject Velocity (forward)	in/sec cm/sec		12 30			12 30	
Eject Velocity (retract)	in/sec cm/sec		12 30			12 30	
Ejector Stroke	in mm		6.9 175			6.9 175	
Mold Protect Pressure (max)	psi bar		985 68			985 68	
Maximum Daylight	in mm		43.3 1100			43.3 1100	
Minimum Mold Height	in mm		7.9 200			7.9 200	
Maximum Mold Height	in mm		23.6 600			23.6 600	
Maximum Mold Weight	lbs kg		4298 1950			4298 1950	
Platen Size (H x V)	in mm		31.88 x 30.3 810 x 770			31.88 x 30.3 810 x 770	
Distance Between Tie Rods	in mm		22.6 x 20.66 575 x 525			22.6 x 20.66 575 x 525	
Tie Rod Diameter	in mm		3.7 95			3.7 95	
Dry Cycle Time (Euromap 6)	sec-mm		1.85 - 403			1.85 - 403	

Notes

- 1) All machine dimensions and specifications are subject to change. Values are for reference only. All general assembly drawings or visuals included herein are for reference only. Please consult the general assembly drawing from a Milacron representative.
- 2) These values are for standard machine horsepower and voltage (460v/3ph/60Hz) with no additional options.



Q-SERIES

Tonnage: 200

**Frame Sizes:
630, 970**

TECHNICAL SPECIFICATIONS

©2019 Milacron LLC.
All Rights Reserved.
Pub Number: T4.1353.B.02.19

4165 Half Acre Rd.,
Batavia OH 45103
513.536.2000
info@milacron.com
www.milacron.com