

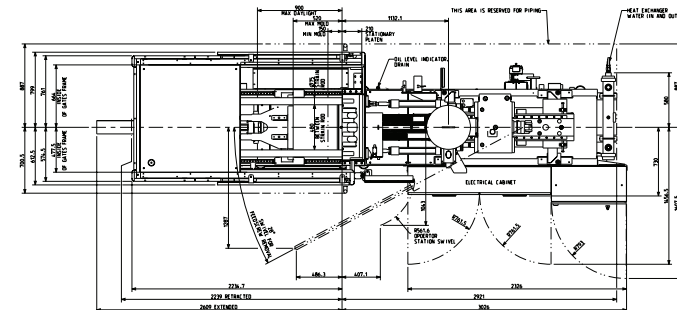
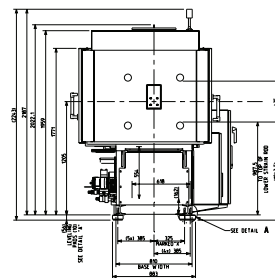
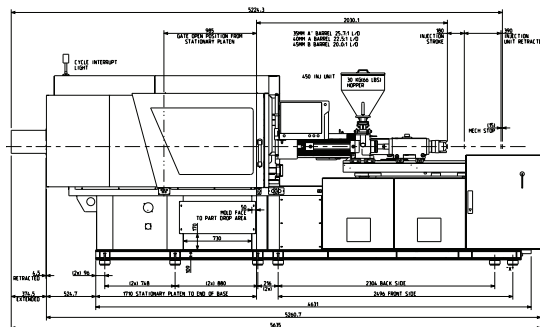


Q-SERIES

Tonnage: 125

**Frame Sizes:
450, 630**

TECHNICAL SPECIFICATIONS



		450 Frame			630 Frame		
	ENGLISH METRIC	A	B	C	A	B	C
General							
Electrical Motor	hp kW		15 11.5			15 11.5	
Total Oil Capacity	gal L		74 280			74 280	
Water Supply (29°C Inlet Temp)	gal/min L/min		13.2 50			13.2 50	
Connected Load	kW		22.8			27.2	
Overall Dimensions (L x W x H)	ft m		18.4 x 5.8 x 7.2 5.6 x 1.763 x 2.2			18.4 x 5.8 x 7.2 5.6 x 1.763 x 2.2	
Machine Weight	lbs kg		11,354 5,150			11,684 5,300	
Injection Unit Specifications							
Injection Capacity, Maximum GPPS	oz gms	5.8 165	7.6 215	9.6 272	8.4 239	10.7 303	13.2 374
Theoretical Displacement	in ³ cm ³	10.6 173	13.8 226	17.5 286	15.3 251	19.4 318	24.0 393
Maximum Injection Pressure	psi bar	35,400 2,443	28,700 1,984	22,700 1,568	36,100 2,492	28,500 1,969	23,100 1,595
Injection Rate	in ³ /sec cm ³ /sec	6.3 103	8.2 134	10.4 170	6.5 107	8.2 135	10.2 167
Injection Velocity	in/sec mm/sec		4.2 107			3.3 85	
Screw Stroke	in mm		7.1 180			7.9 200	
Back Pressure Limits	psi bar		500 34.4			500 34.4	
Screw Diameter	in mm	1.38 35	1.57 40	1.77 45	1.57 40	1.77 45	1.97 50
Screw L/D Ratio	L/D	25.7	22.5	20	25	22.2	20
Screw Speed	rpm		279			222	
Screw Torque @172 bar	in-lb Nm		7,900 876			9,800 1,080	
Plasticizing Rate (GPPS)	oz/sec gm/sec	0.5 13	0.7 19	0.9 26	0.5 15	0.7 20	1.2 33
Number of Pyrometers (Barrel/Nozzle)	qty		4/1			4/1	
Total Heat Capacity	kW		11.3			15.7	

©2019 Milacron LLC. All Rights Reserved.
Pub Number: T4.1351.B.02.19

4165 Half Acre Rd.,
Batavia OH 45103
513.536.2000
info@milacron.com
www.milacron.com

		450 Frame			630 Frame		
	ENGLISH METRIC	A	B	C	A	B	C
Clamp							
Clamping Force	ton kN		123 1,100			123 1,100	
Opening Force	ton kN		12 110			12 110	
Clamp Stroke	in mm		15.0 380			15.0 380	
Clamp Close Velocity	in/sec cm/sec		31 80			31 80	
Clamp Open Velocity	in/sec cm/sec		26 65			26 65	
Eject Force (forward)	tons kN		3.9 3.5			3.9 3.5	
Eject Velocity (forward)	in/sec cm/sec		12 30			12 30	
Eject Velocity (retract)	in/sec cm/sec		12 30			12 30	
Ejector Stroke	in mm		5.9 150			5.9 150	
Mold Protect Pressure (max)	psi bar		985 68			985 68	
Maximum Daylight	in mm		35.4 900			35.4 900	
Minimum Mold Height	in mm		5.9 150			5.9 150	
Maximum Mold Height	in mm		20.5 520			20.5 520	
Maximum Mold Weight	lbs kg		2535 1150			2535 1150	
Platen Size (H x V)	in mm		27.2 x 25.4 690 x 645			27.2 x 25.4 690 x 645	
Distance Between Tie Rods	in mm		18.9 x 17.1 480 x 435			18.9 x 17.1 480 x 435	
Tie Rod Diameter	in mm		3.0 75			3.0 75	
Dry Cycle Time (Euromap 6)	sec-mm		TBD - 336			TBD - 336	

Notes

- 1) All machine dimensions and specifications are subject to change. Values are for reference only. All general assembly drawings or visuals included herein are for reference only. Please consult the general assembly drawing from a Milacron representative.
- 2) These values are for standard machine horsepower and voltage (460v/3ph/60Hz) with no additional options.



Q-SERIES

Tonnage: 125

**Frame Sizes:
450, 630**

TECHNICAL SPECIFICATIONS

©2019 Milacron LLC. All Rights Reserved.
Pub Number: T4.1351.B.02.19

4165 Half Acre Rd.,
Batavia OH 45103
513.536.2000
info@milacron.com
www.milacron.com