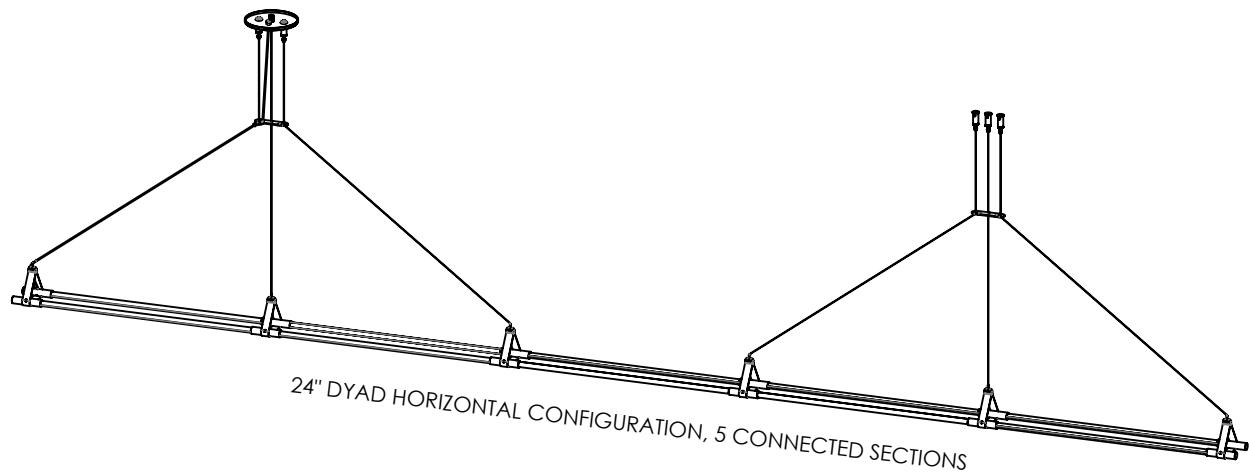
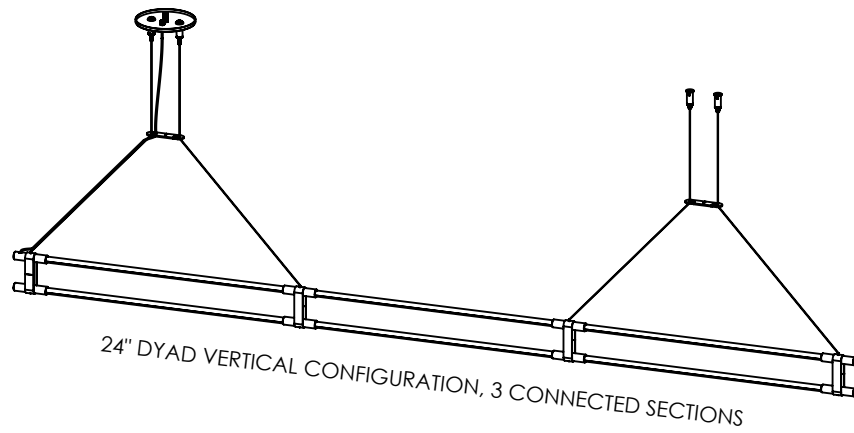
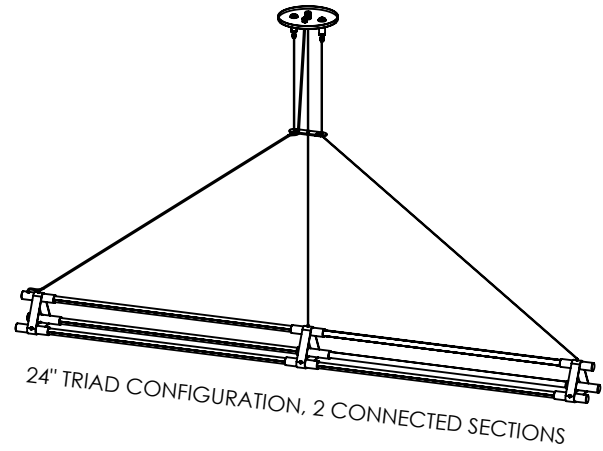
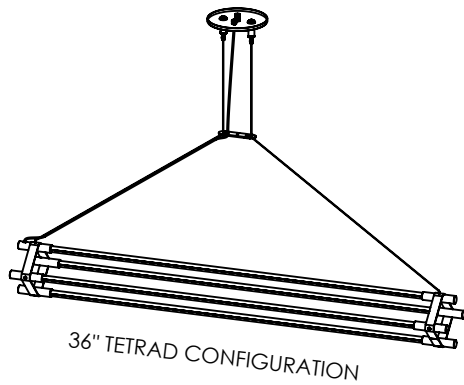


JUNIPER®

THIN Multiples

Installation Guide

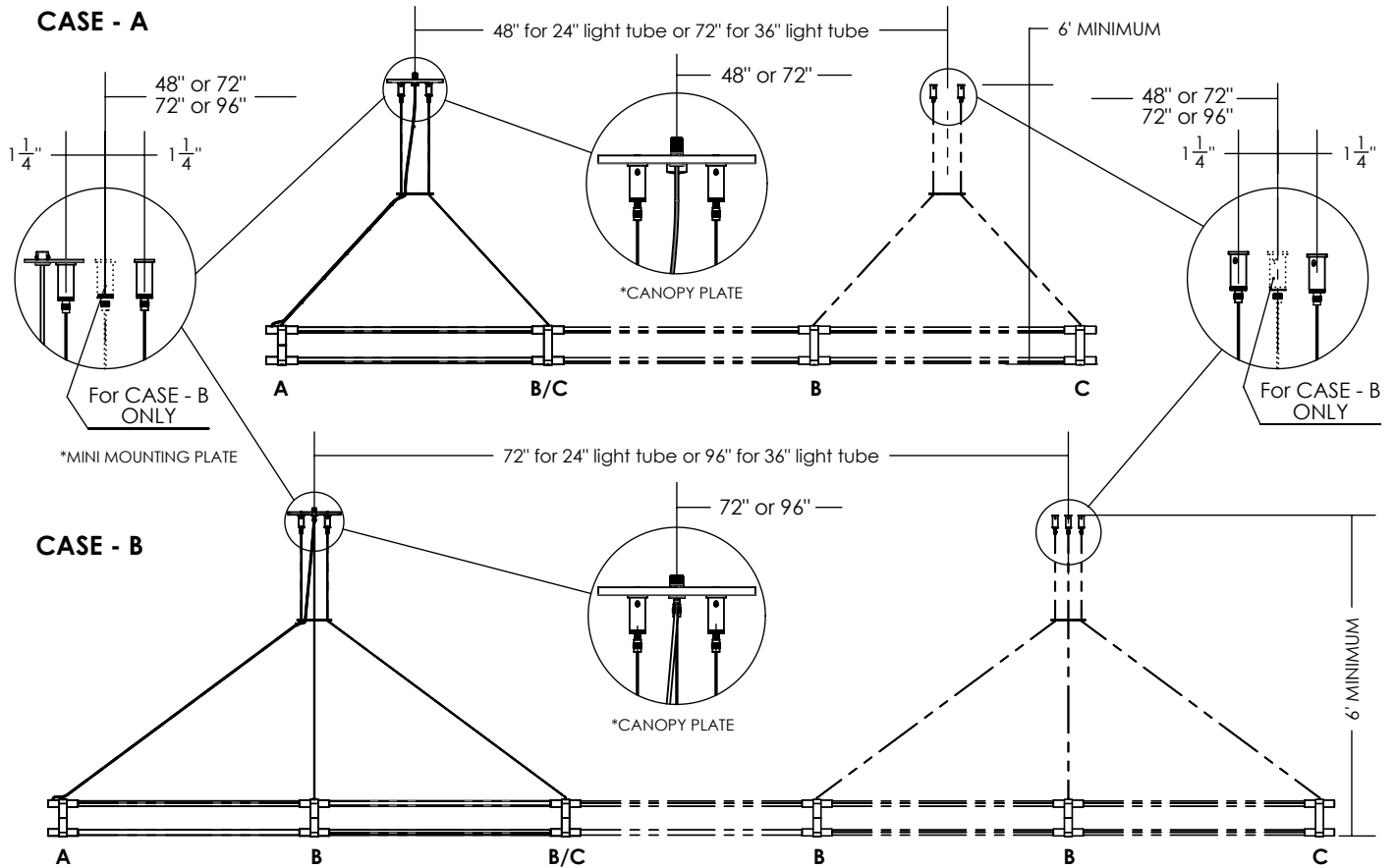
Designed by Peter Bristol & Juniper



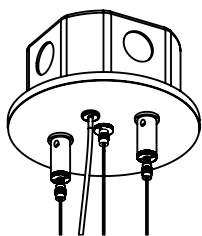
WARNING

**ONLY A LICENSED ELECTRICIAN SHOULD PERFORM INSTALLATION
DISCONNECT MAIN POWER AT THE SOURCE PRIOR TO INSTALLATION**

**INSTRUCTIONS MEANT FOR AN INDEPENDENT REMOTE DRIVER RATED CLASS 2
24V DC AT THE CONNECTIONS ONLY (NOT 120V AC)**

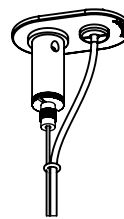
MARK MOUNTING POINTS**KEY**

- A POWER SLEEVES** MOUNTED BENEATH *CANOPY PLATE OR *MINI MOUNTING PLATE AT POWER END OF THE FIXTURE (SEE POWER FEED OPTIONS).
- B PASSTHROUGH SLEEVES** USED TO CONNECT SEGMENTS TOGETHER. MOUNTED IN BETWEEN POWER SLEEVES AND END SLEEVES.
- C END SLEEVES** MOUNTED AT THE END OF THE FIXTURE.

***POWER FEED OPTIONS****CANOPY PLATE**

FOR FIXTURES WIRED TO A JUNCTION BOX.

SEE PAGE 3 FOR DETAILED INSTALLATION AND WIRING INFORMATION.

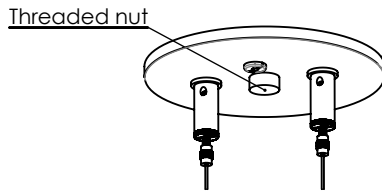
**MINI MOUNTING PLATE**

FOR IN-CEILING WIRING AND FIXTURES MOUNTED TO THE CEILING.

SEE PAGE 4 FOR DETAILED INSTALLATION AND WIRING INFORMATION.

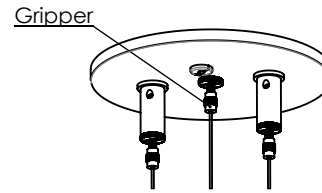
CANOPY PLATE CONFIGURATIONS

CASE - A



FOR COLLAR PINCHING TWO AIRCRAFT CABLES, REFER TO 5-A IN INSTRUCTIONS

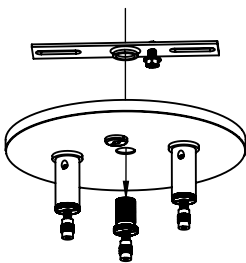
CASE - B



FOR COLLAR PINCHING THREE AIRCRAFT CABLES, REFER TO 5-B IN INSTRUCTIONS

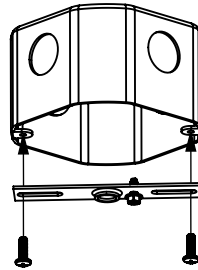
CEILING FIXTURE INSTALLATION WITH CANOPY PLATE

1



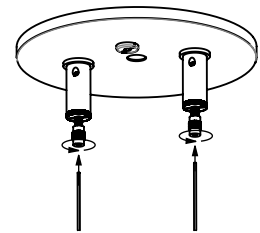
Remove gripper from the canopy plate to release the crossbar.

2



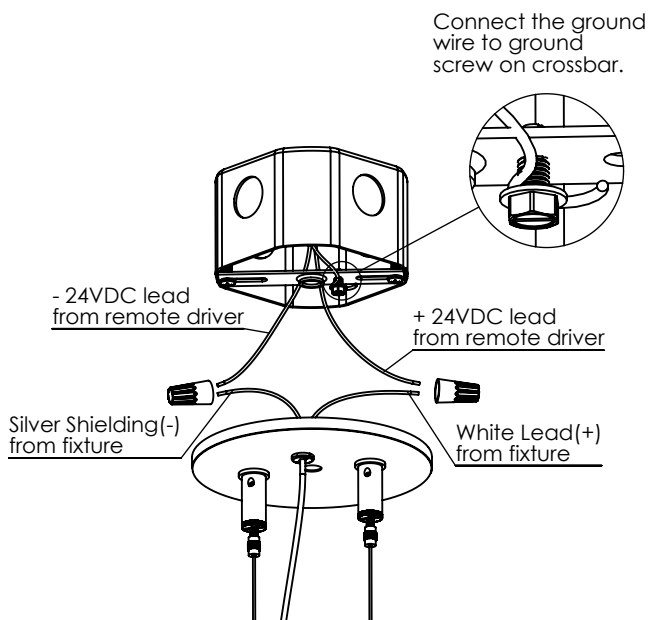
Attach the crossbar to the junction box using provided screws.

3



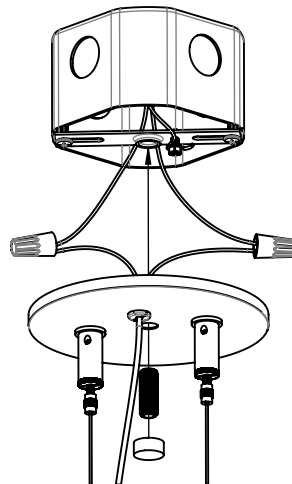
Partly unscrew safety nut on gripper, feed aircraft cable on power end through. Suspend an extra 2 feet of aircraft cable, more than the planned height of fixture.

4



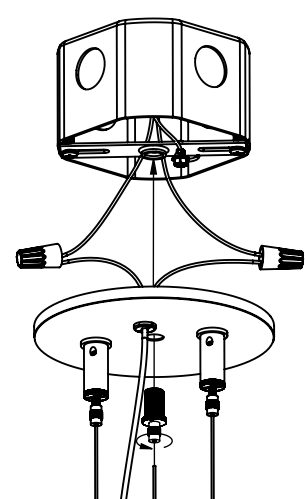
Pass power cable through bushing, and wire according to diagram.

5-A



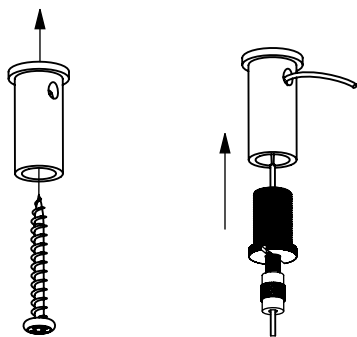
Place wires inside junction box and screw threaded rod into crossbar to mount canopy plate to junction box. Screw the nut over the threaded rod to cover it.

5-B



Place wires inside junction box and screw gripper into crossbar to mount canopy plate to junction box. Partly unscrew safety nut on gripper. Feed aircraft cable to the gripper.

6 (*IF APPLICABLE)

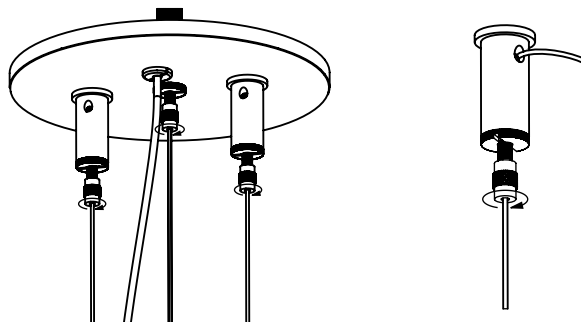


**Only applicable to more than one connected sections for "CASE - A" or more than two sections for "CASE - B"*

Install ceiling posts at all B and C mounting points using provided screws. Screw grippers into ceiling posts.

Woodscrews are provided for default installs. Alternate screws may be used at the recommendation of a licensed electrician.

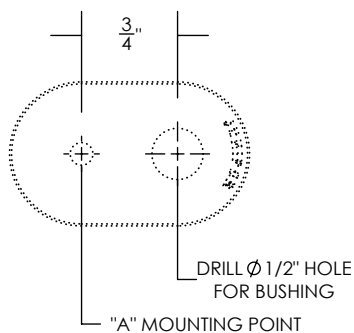
7



Adjust aircraft cable length as needed. Press safety nut on gripper to loosen aircraft cable. Screw safety nut in completely when finished. **Do not cut extra aircraft cable until full fixture is assembled and working.**

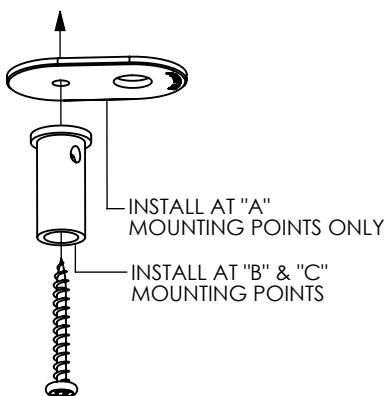
CEILING FIXTURE INSTALLATION WITH MINI MOUNTING PLATE

1



Drill hole for bushing according to diagram.

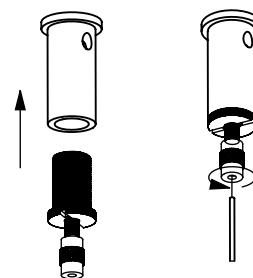
2



Install using provided screws according to diagram.

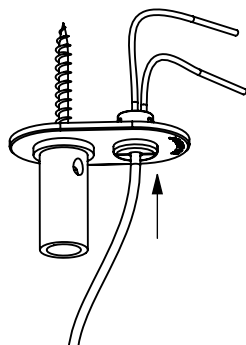
Woodscrews are provided for default installs. Alternate screws may be used at the recommendation of a licensed electrician.

3



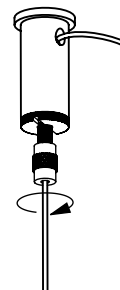
Screw gripper into ceiling post. Partly unscrew safety nut on gripper and feed aircraft cables through. Suspend an extra 2 feet of aircraft cable more than the planned height of the fixture on all grippers except "CASE - B ONLY" gripper (See page 2).

4



Pass power cable through bushing and wire to electrician-provided 18AWG in-wall rated cable (recommended).

5

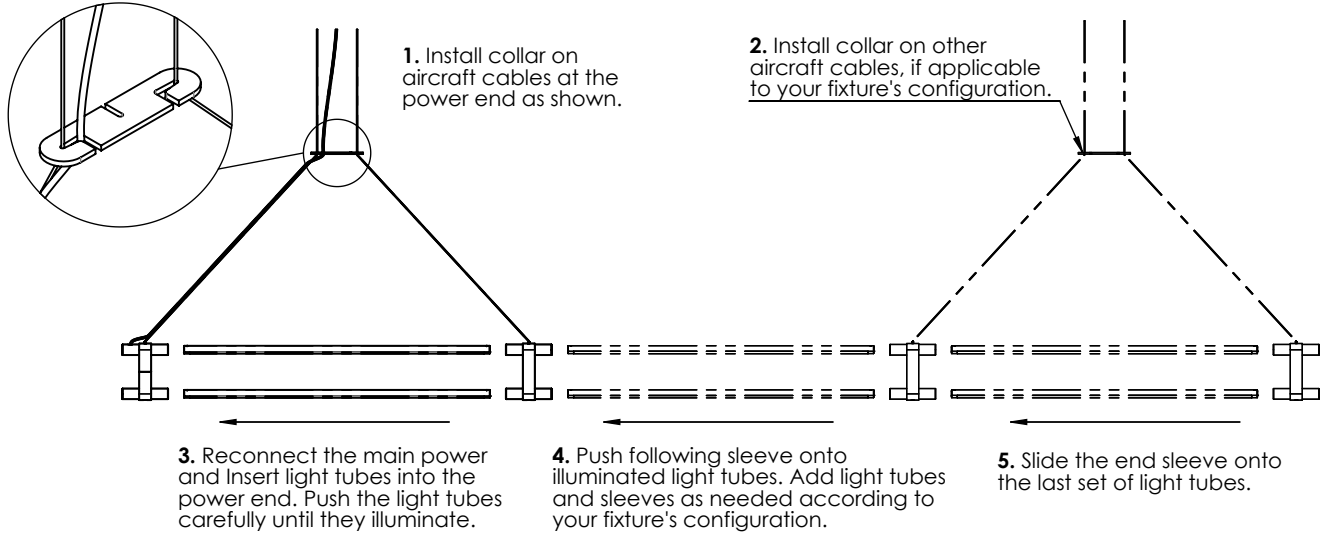


Adjust aircraft cable lengths as needed. Press safety nut on gripper to loosen aircraft cable. Screw safety nut in completely when finished. **Do not cut extra aircraft cable until full fixture is assembled and working.**

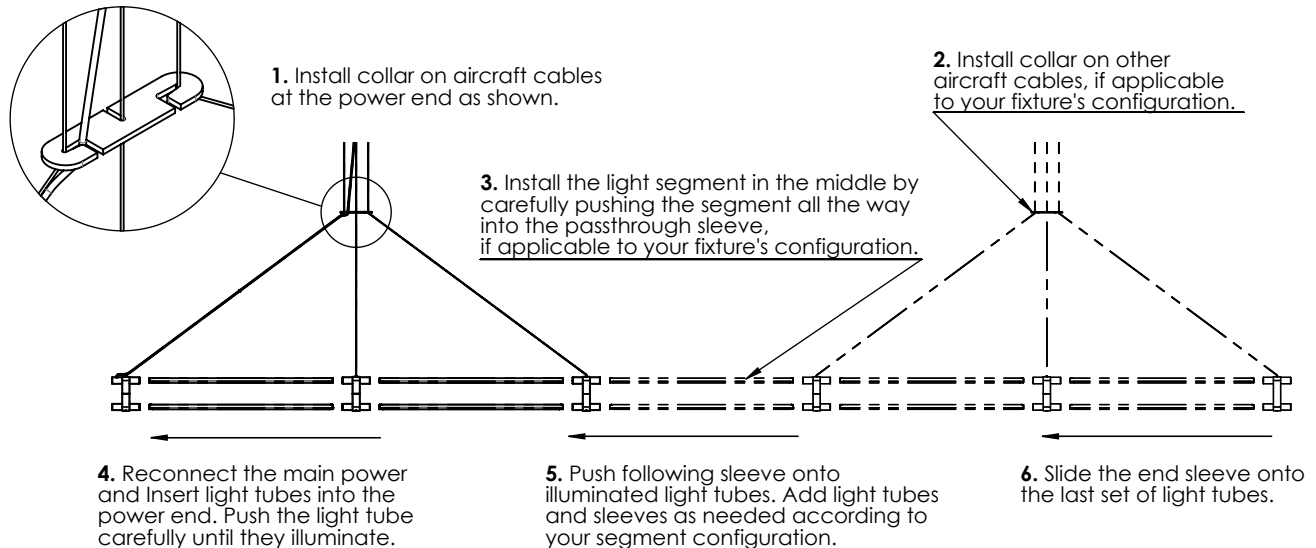
LIGHT SEGMENT INSTALLATION

The THIN Multiples fixture is designed with an inventive magnetic connection. Simply insert the light tubes into their sleeves for electrical contact to be made.

CASE - A: SINGLE SEGMENT COLLAR INSTALL



CASE - B: DOUBLE SEGMENT COLLAR INSTALL



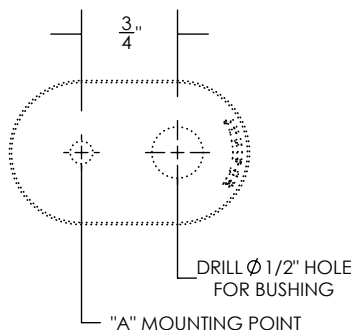
CARE INSTRUCTIONS

Brass will patina over time like other natural metals and regular care is required in order to retain the quality finish of you THIN fixture for years to come.

Gently wipe with a damp cloth to remove dirt, dust and fingerprints.

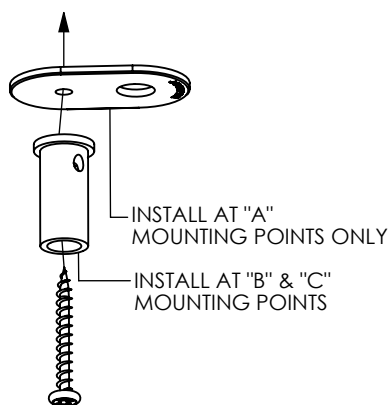
Use indoors only.

1



Drill hole for bushing according to diagram.

2



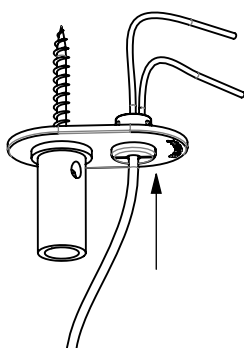
Install using provided screws according to diagram.

3



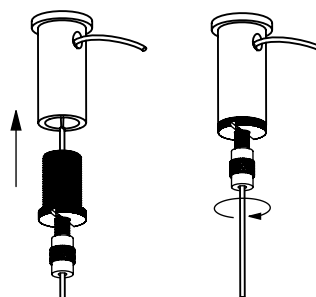
3. Partly unscrew safety nut on gripper, feed aircraft cables through.

4



Pass power cable through bushing and wire to electrician-provided 18AWG in-wall rated cable (recommended).

5



Screw grippers into ceiling posts. Adjust aircraft cable lengths as needed. Press safety nut on gripper to loosen aircraft cable. Screw safety nut in completely when finished. **Do not cut extra aircraft cable until full fixture is assembled and working.**