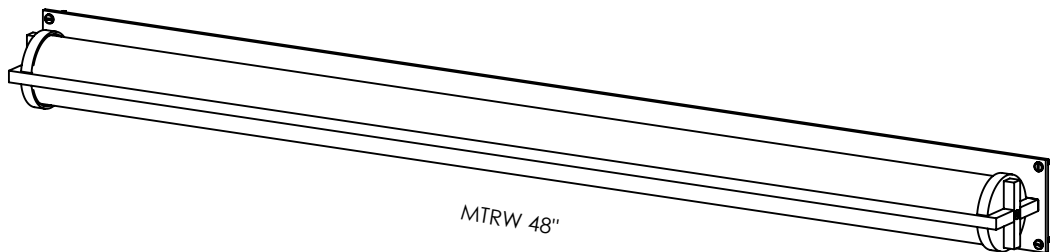
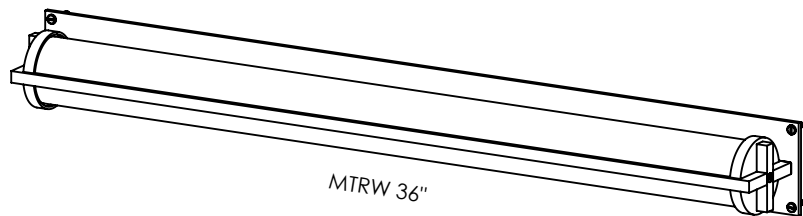
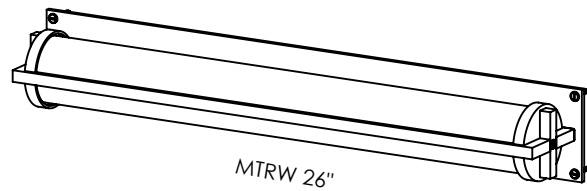


# JUNIPER®

## Metropolis Wall Sconce Installation Guide



**WARNING**

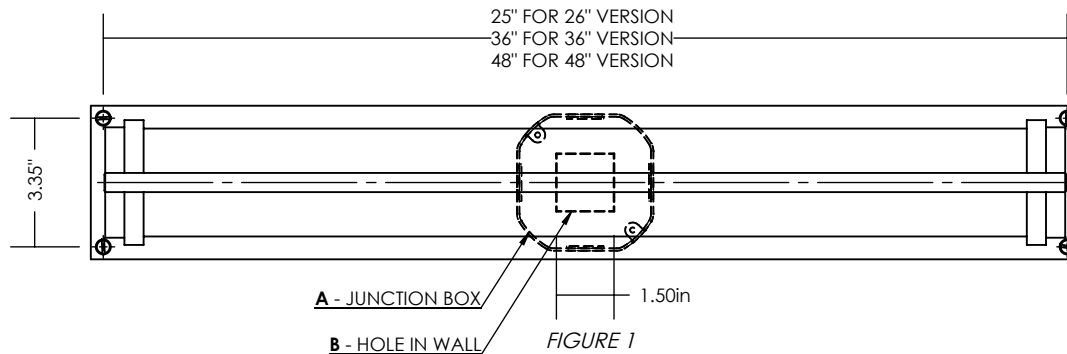
**A LICENSED ELECTRICIAN SHOULD PERFORM INSTALLATION.  
DISCONNECT MAIN POWER AT THE SOURCE PRIOR TO INSTALLATION.**

**INSTRUCTIONS ARE MEANT FOR A REMOTE CLASS 2 DRIVER.**

**BLOCKING MAY BE REQUIRED FOR DRY WALL MOUNTING.**

**STEP 1: MARK MOUNTING POINTS**

Carefully mark the mounting points with a pencil or marker, using the spacings indicated in Figure 1. **It is highly recommended to use a laser alignment/ measuring tool to ensure that mounted parts are properly distanced.**



**A** - When mounting the fixture over a junction box, make sure the fixture completely covers the junction box.

**B** - When mounting the fixture without a junction box, mark and cut out a 1.5in square hole in the wall to receive the wires for powering and grounding the fixture. Ensure that the hole is centered between the longer sides of the fixture.

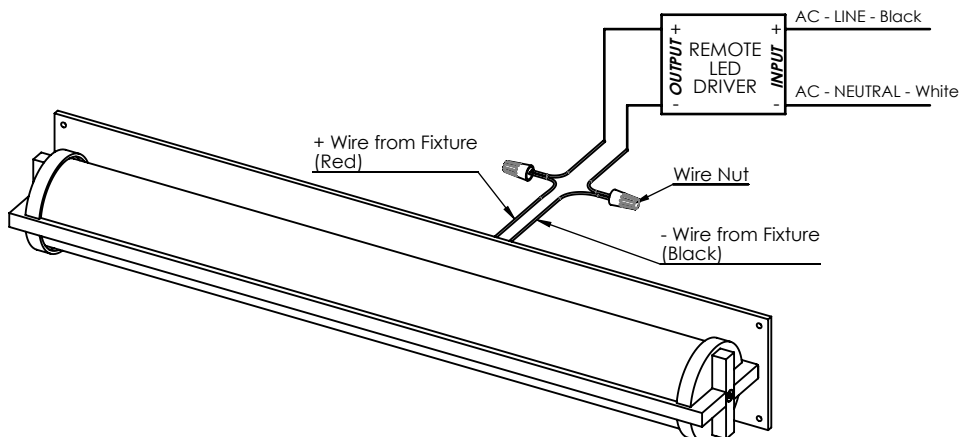
**STEP 2: WIRING THE FIXTURE**

FIGURE 2

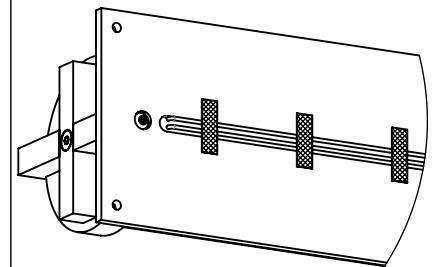


FIGURE 3

Connect wires according to the diagram shown in FIGURE 2. Tape the loose wire at the back of the fixture as shown in FIGURE 3.

**You may require assistance holding the light fixture while making wire connections. Wires to and from the driver are not provided.**

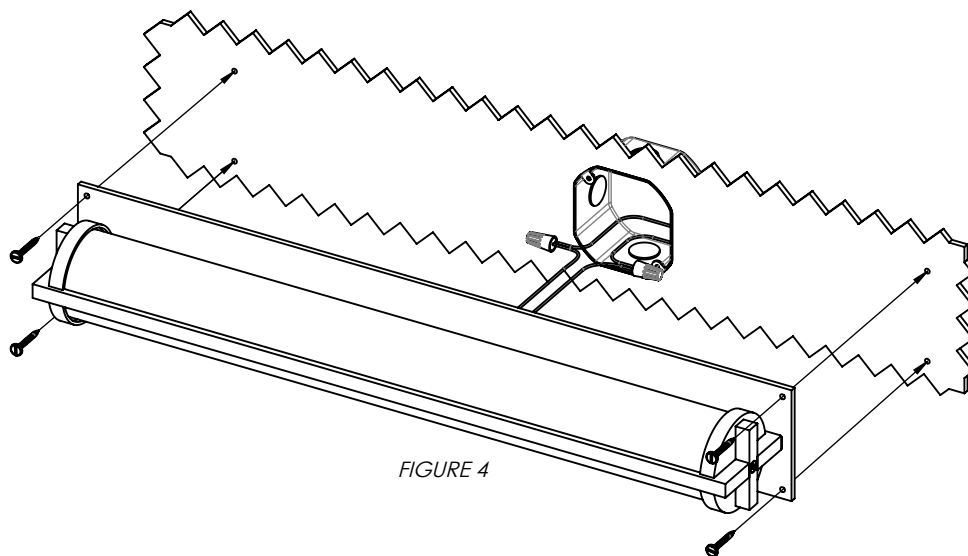
**STEP 2A: MOUNTING FIXTURE WITH JUNCTION BOX**

FIGURE 4

Push the wires and wire nuts inside the junction box and install the fixture using provided wood screws. **Blocking is recommended for drywall mounting.**

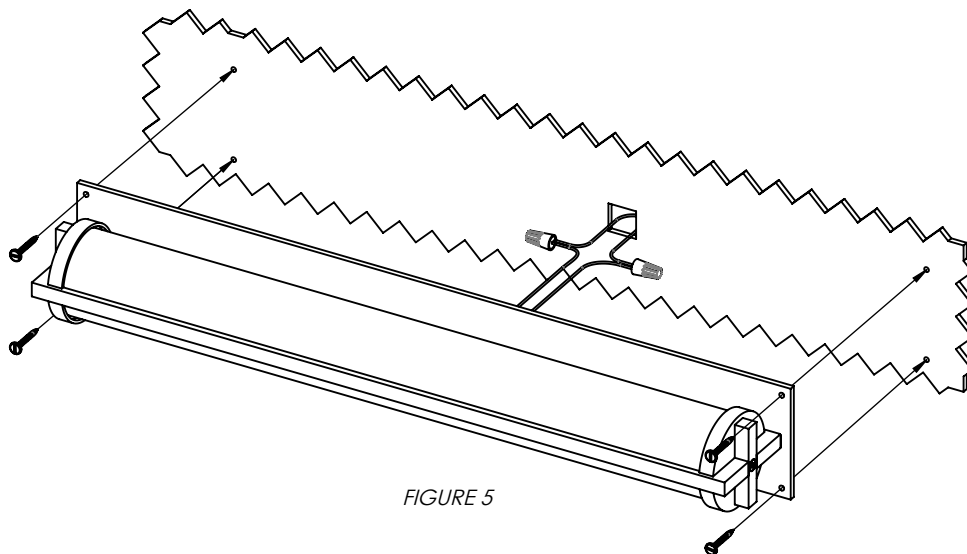
**STEP 2B: MOUNTING FIXTURE WITHOUT JUNCTION BOX**

FIGURE 5

Push the wires and wire nuts inside the hole in the wall and install fixture using provided wood screws. **Blocking is recommended for drywall mounting.**

**CARE INSTRUCTIONS**

Gently wipe with a damp cloth to remove dirt, dust, and fingerprints.

Do not use any chemical cleaning solution.

Use indoors only.