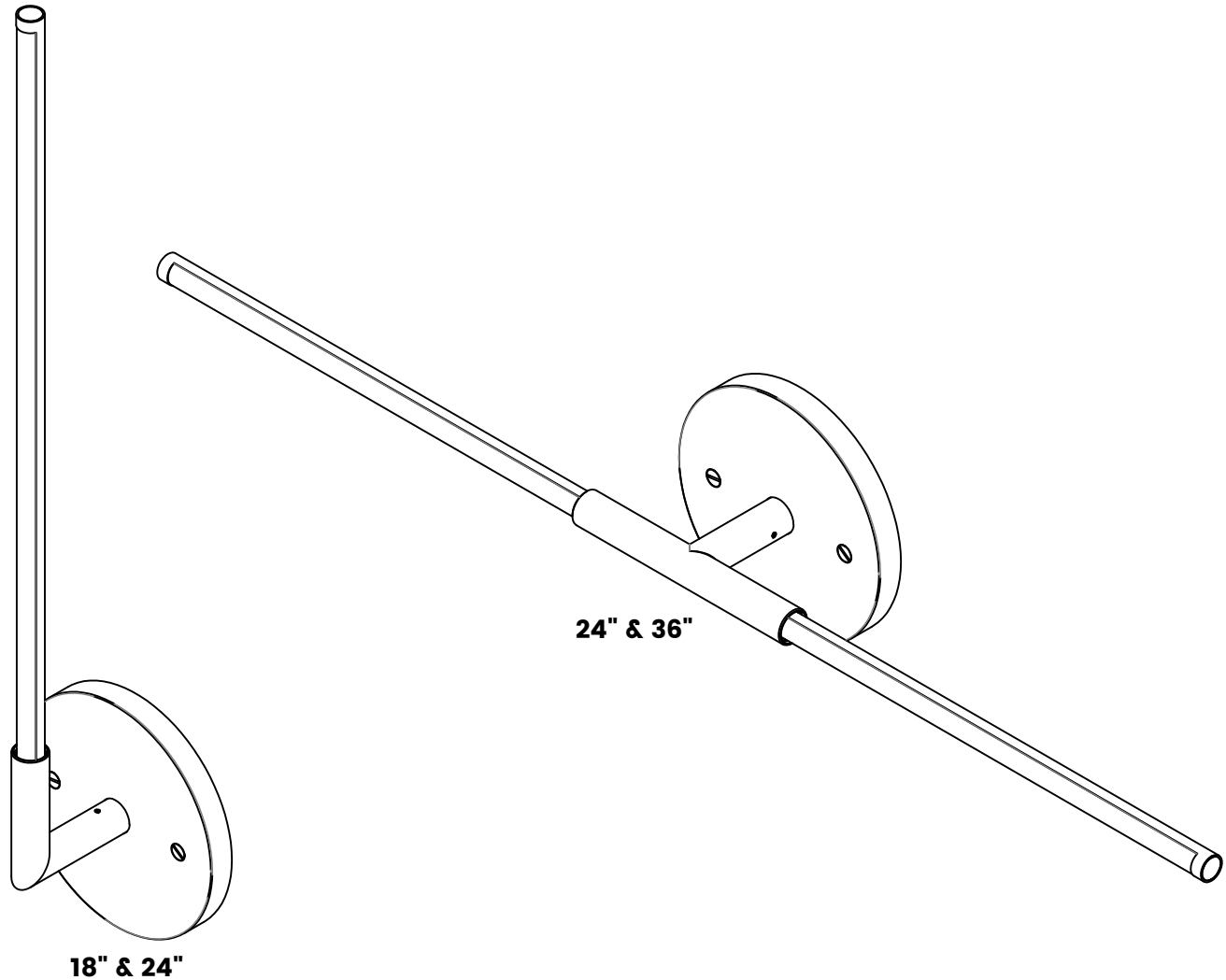


## Thin Float - Junction Box - Mounted Local & Remote Installation Guide

**JPR-FLO-0\_-\_-\_-\_-F-\_-J**



### CARE INSTRUCTIONS

Brass will patina over time like other natural metals and regular care is required in order to retain the quality finish of your fixture for years to come.

Gently wipe with a damp cloth to remove dirt, dust, and fingerprints.

Do not use any chemical cleaning solution.

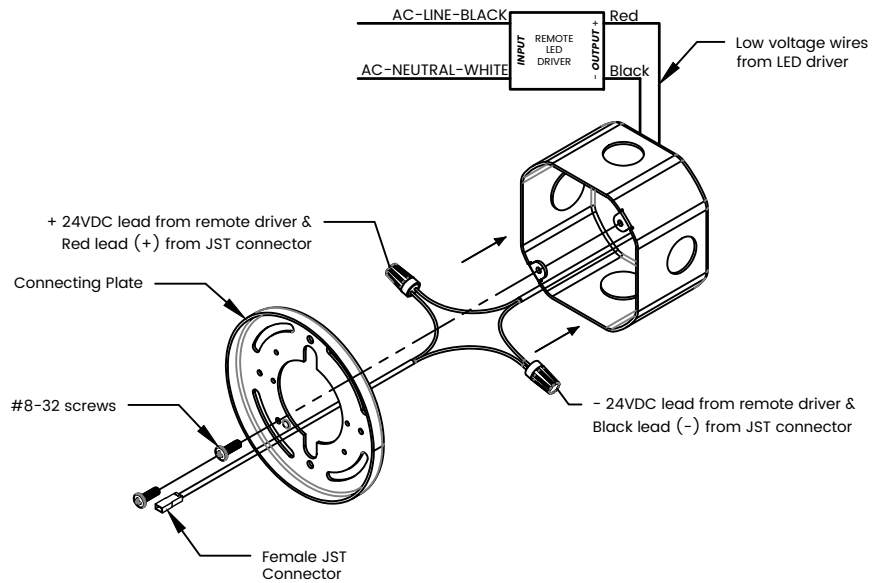
Use indoors only.

**WARNING**  
**A LICENSED ELECTRICIAN SHOULD PERFORM INSTALLATION.**  
**DISCONNECT MAIN POWER AT THE SOURCE PRIOR TO INSTALLATION.**

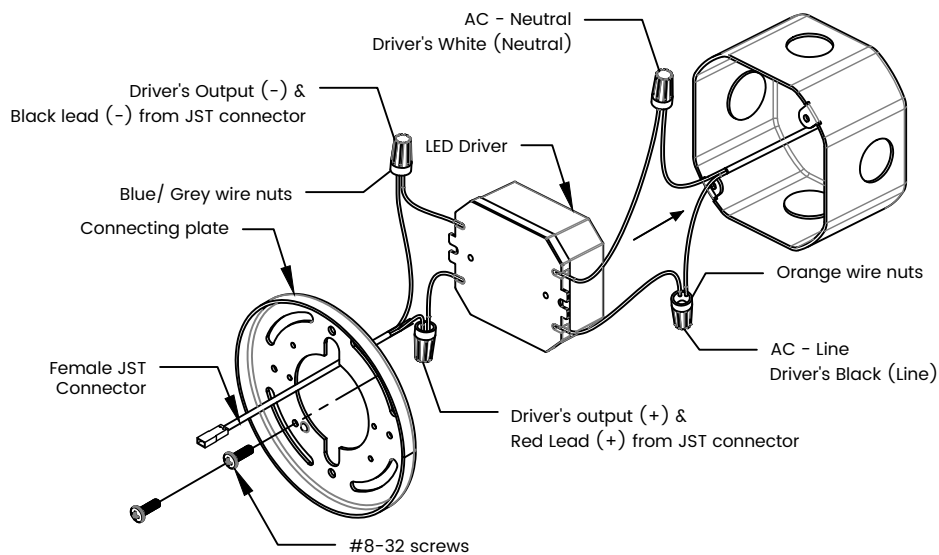
**INSTRUCTION MEANT FOR REMOTE CLASS 2 DRIVERS.**

## STEP 1: INSTALLING CONNECTING PLATE & WIRING

### (A) REMOTE INSTALLATION

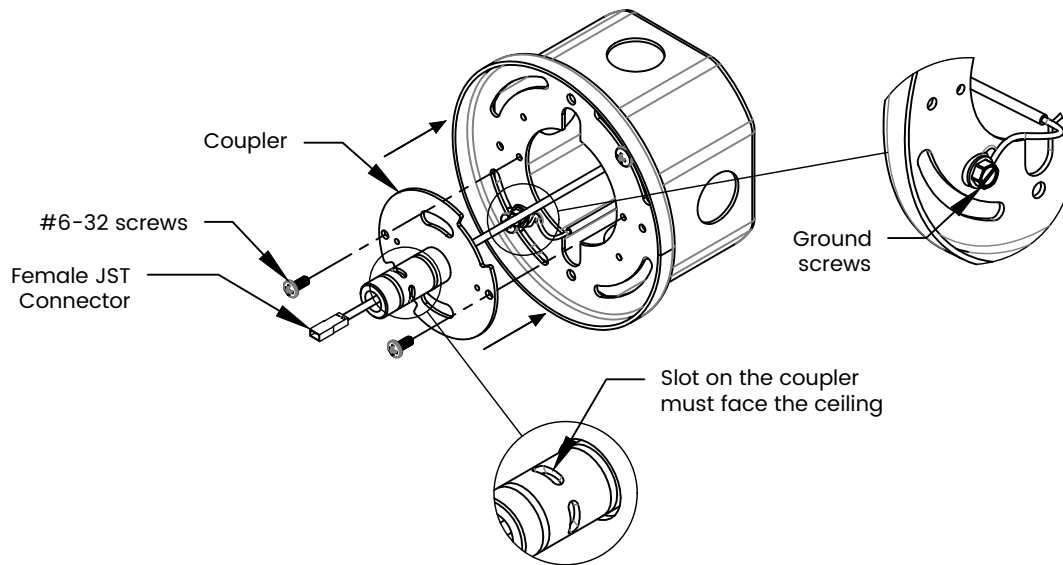


### (B) LOCAL INSTALLATION



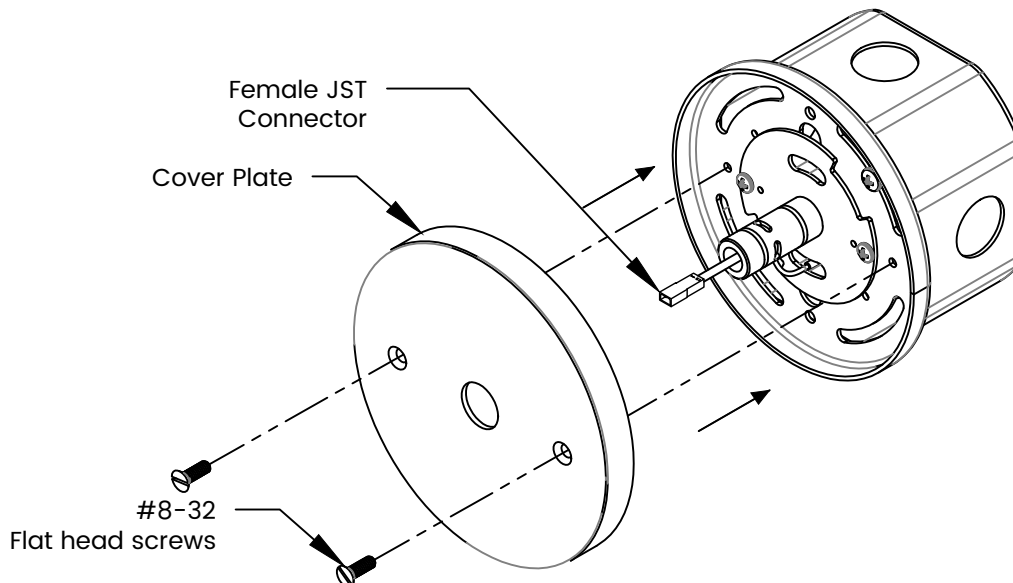
1. Make connections between provided Female JST connector and wires from the driver as show above. **Wires to and from the driver are not provided.**
2. Mount the provided connecting plate on the J-box using the #8-32 screws through provide slots

## STEP 2: INSTALLING COUPLER



1. Pass the female JST connector through the coupler and secure the coupler using #6-32 screws with connecting plate.
2. Make sure the slot on the coupler is facing the ceiling.
3. Connect ground wire to ground screw on connecting plate.

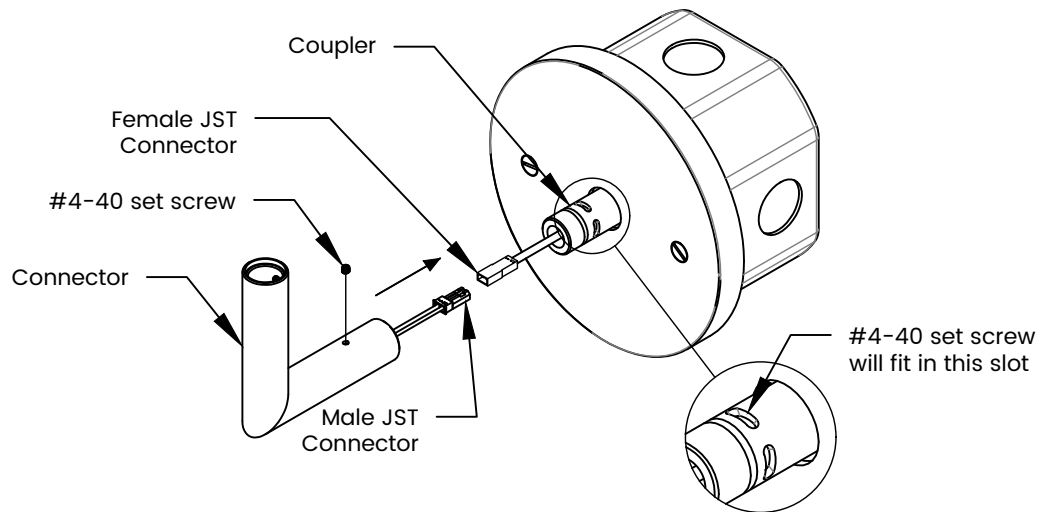
## STEP 3: INSTALLING COVER PLATE



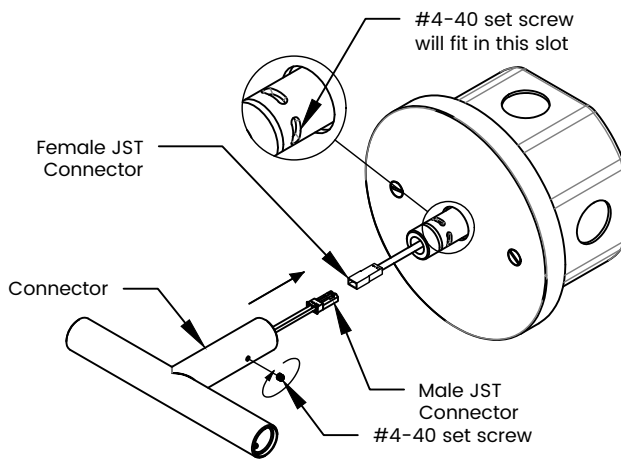
Mount the cover plate using provided #8-32 flat head screws and secure it with the connecting plate.

## STEP 4: ORIENTATION & INSTALLATION OF CONNECTOR

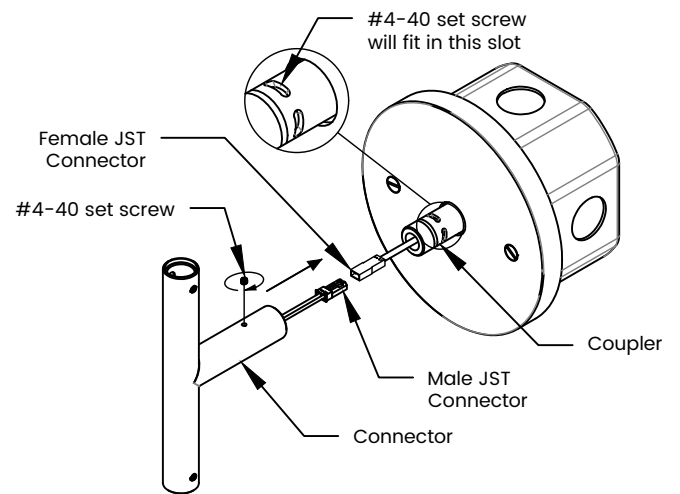
### (A) SINGLE FLOAT



### (B) RETRO FLOAT



For Horizontal Light Segments

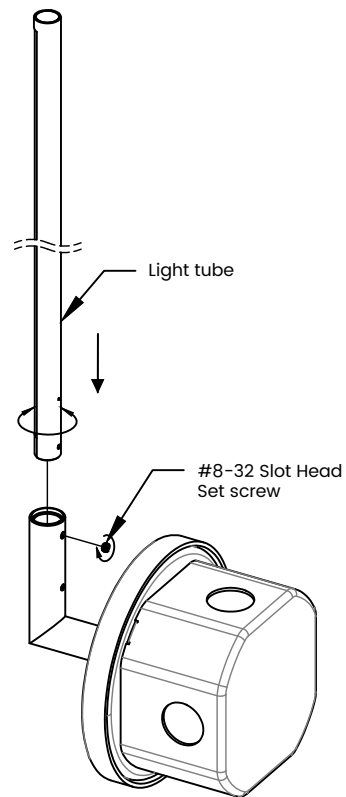


For Vertical Light Segments

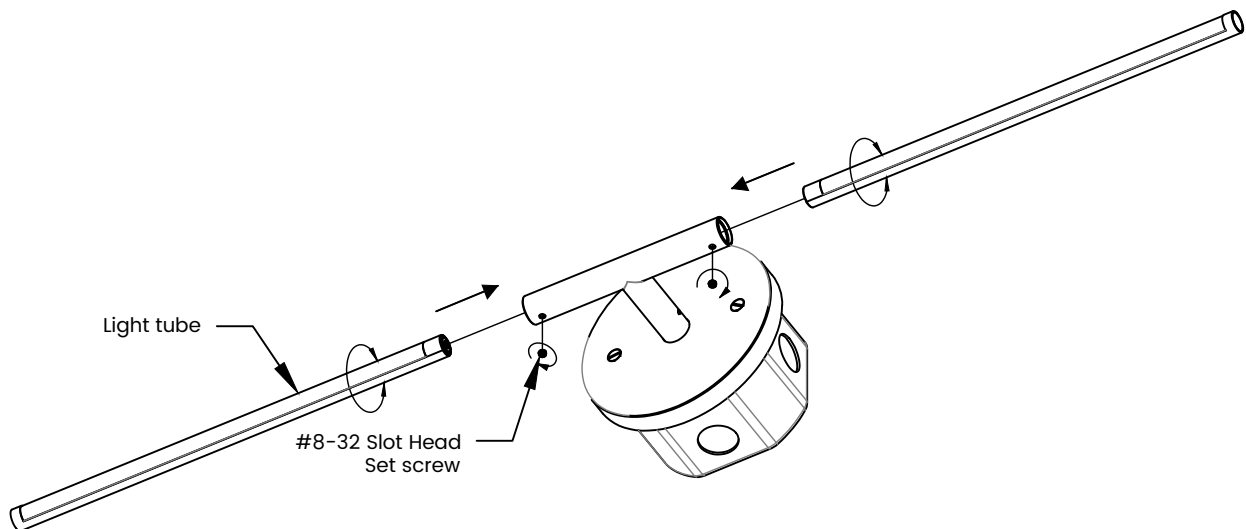
1. Connect the female JST from J-box to the male JST from the connector.
2. Push the JST connection into the J-box.
3. Install the connector on the coupler using provided #4-40 set screw. Slots on the coupler provide means to make small adjustment in the connector angle. Make sure that the set screw fits inside slot on the coupler.

## STEP 5: INSTALLING LIGHT TUBE

### (A) SINGLE FLOAT



### (B) RETRO FLOAT



The fixture is designed with an innovative magnetic connection. Simply insert the light tube into the connector for electrical contact to be made.

1. Insert light tube into the connector.
2. Rotate the light tube to adjust orientation.
3. Gently turn the provided #8-32 slot head set screw to lock light segment in place.
4. To change the orientation of light segment make sure unscrew the #8-32 slot head set screw before turning the light segment and gently screw it back when desired orientation is achieved.