

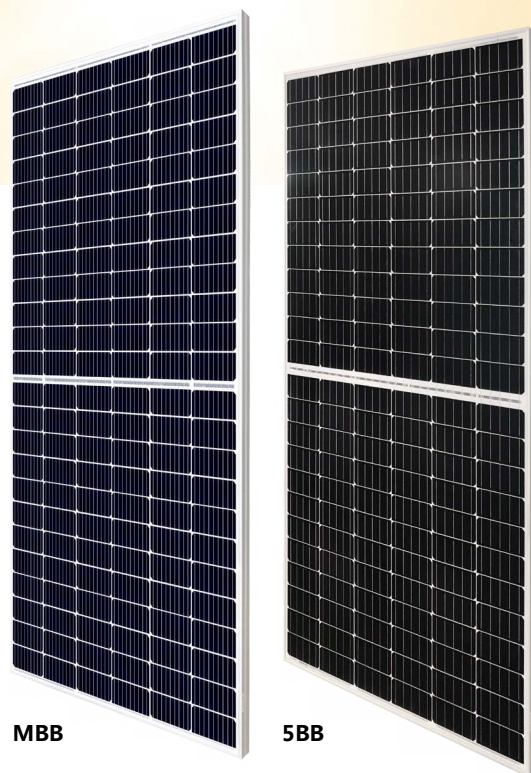


# KuMax

## HIGH EFFICIENCY MONO PERC MODULE

### CS3U-375 | 380 | 385 | 390 | 395MS

#### (1000 V / 1500 V)



#### MORE POWER



Low power loss in cell connection



Low NMOT:  $41 \pm 3^\circ\text{C}$   
Low temperature coefficient (Pmax):  $-0.37\% / ^\circ\text{C}$



Better shading tolerance



High PTC  
High PTC rating of up to: 93.13 %

#### MORE RELIABLE



Lower hot spot temperature



Minimizes micro-cracks



Heavy snow load up to 5400 Pa,  
wind load up to 3600 Pa\*



linear power output warranty



product warranty on materials  
and workmanship

#### MANAGEMENT SYSTEM CERTIFICATES

ISO 9001:2015 / Quality management system  
ISO 14001:2015 / Standards for environmental management system  
OHSAS 18001:2007 / International standards for occupational health & safety

#### PRODUCT CERTIFICATES\*

IEC 61215 / IEC 61730: VDE / CE / MCS / CEC AU  
UL 1703 / IEC 61215 performance: CEC listed (US) / FSEC (US Florida)  
UL 1703: CSA / IEC61701 ED2: VDE / IEC62716: VDE / IEC60068-2-68: SGS  
Take-e-way



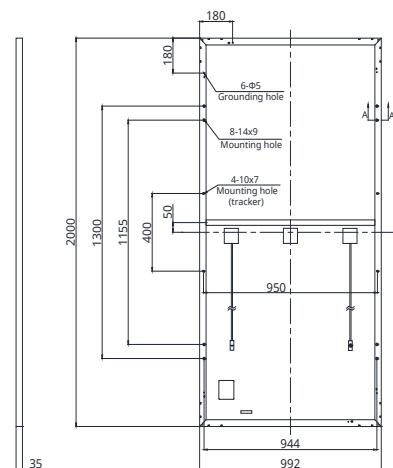
\*We can provide this product with special BOM specifically certified with salt mist, ammonia and sand blowing tests. Please talk to our local technical sales representatives to get your customized solutions.

**CANADIAN SOLAR INC.** is committed to providing high quality solar products, solar system solutions and services to customers around the world. No. 1 module supplier for quality and performance/price ratio in IHS Module Customer Insight Survey. As a leading PV project developer and manufacturer of solar modules with over 30 GW deployed around the world since 2001.

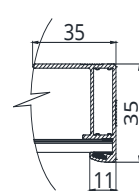
\* For detailed information, please refer to the Installation Manual.

## ENGINEERING DRAWING (mm)

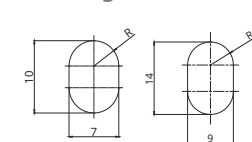
### Rear View



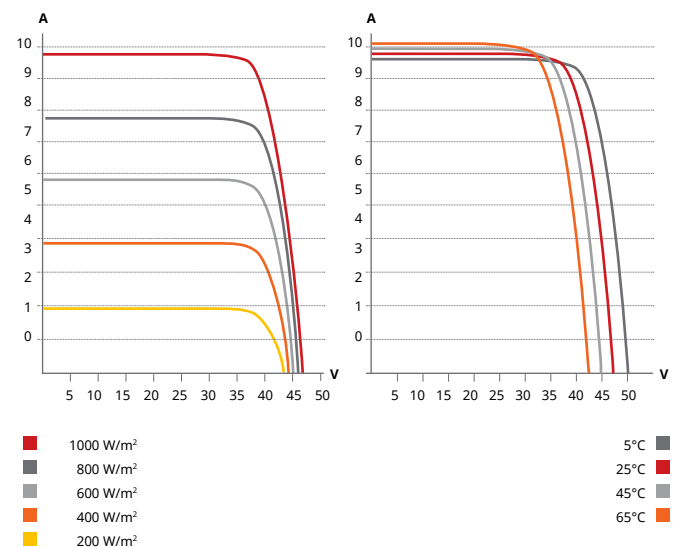
### Frame Cross Section A-A



### Mounting Hole



## CS3U-375MS / I-V CURVES



## ELECTRICAL DATA | STC\*

CS3U	375MS	380MS	385MS	390MS	395MS
Nominal Max. Power (Pmax)	375 W	380 W	385 W	390 W	395 W
Opt. Operating Voltage (Vmp)	39.8 V	40.0 V	40.2 V	40.4 V	40.6 V
Opt. Operating Current (Imp)	9.43 A	9.50 A	9.58 A	9.66 A	9.73 A
Open Circuit Voltage (Voc)	47.6 V	47.8 V	48.0 V	48.2 V	48.4 V
Short Circuit Current (Isc)	9.93 A	10.01 A	10.09 A	10.17 A	10.25 A
Module Efficiency	18.90%	19.15%	19.41%	19.66%	19.91%
Operating Temperature	-40°C ~ +85°C				
Max. System Voltage	1500V (IEC/UL) or 1000V (IEC/UL)				
Module Fire Performance	TYPE 1 (UL 1703) or CLASS C (IEC 61730)				
Max. Series Fuse Rating	30 A				
Application Classification	Class A				
Power Tolerance	0 ~ + 5 W				

\* Under Standard Test Conditions (STC) of irradiance of 1000 W/m², spectrum AM 1.5 and cell temperature of 25°C.

## ELECTRICAL DATA | NMOT\*

CS3U	375MS	380MS	385MS	390MS	395MS
Nominal Max. Power (Pmax)	280 W	284 W	287 W	291 W	295 W
Opt. Operating Voltage (Vmp)	36.9 V	37.1 V	37.3 V	37.5 V	37.7 V
Opt. Operating Current (Imp)	7.58 A	7.64 A	7.70 A	7.76 A	7.82 A
Open Circuit Voltage (Voc)	44.8 V	45.0 V	45.1 V	45.3 V	45.5 V
Short Circuit Current (Isc)	8.01 A	8.07 A	8.14 A	8.20 A	8.26 A

\* Under Nominal Module Operating Temperature (NMOT), irradiance of 800 W/m²-spectrum AM 1.5, ambient temperature 20°C, wind speed 1 m/s.

\* The specifications and key features contained in this datasheet may deviate slightly from our actual products due to the on-going innovation and product enhancement. Canadian Solar Inc. reserves the right to make necessary adjustments to the information described herein at any time without further notice. Please be kindly advised that PV modules should be handled and installed by qualified people who have professional skills and please carefully read the safety and installation instructions before using our PV modules.

## CANADIAN SOLAR INC.

545 Speedvale Avenue West, Guelph, Ontario N1K 1E6, Canada, [www.canadiansolar.com](http://www.canadiansolar.com), [support@canadiansolar.com](mailto:support@canadiansolar.com)

## MECHANICAL DATA

Specification	Data
Cell Type	Mono-crystalline
Cell Arrangement	144 [2 X (12 X 6)]
Dimensions	2000 X 992 X 35 mm (78.7 X 39.1 X 1.38 in)
Weight	22.5 kg (49.6 lbs)
Front Cover	3.2 mm tempered glass
Frame	Anodized aluminium alloy, crossbar enhanced
J-Box	IP68, 3 bypass diodes
Cable	4 mm² (IEC), 12 AWG (UL)
Cable Length (Including Connector)	Portrait: 400 mm (15.7 in) (+) / 280 mm (11.0 in) (-); landscape: 1250 mm (49.2 in); leap-frog connection: 1670 mm (65.7 in)*
Connector	T4 series
Per Pallet	30 pieces
Per Container (40' HQ)	660 pieces

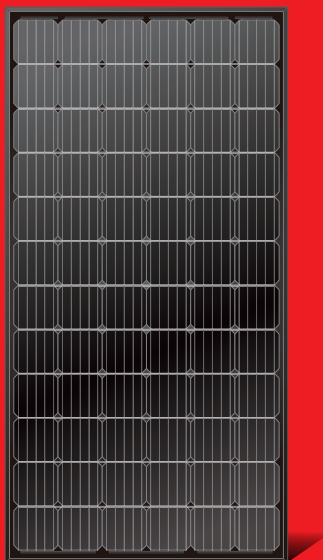
\* For detailed information, please contact your local Canadian Solar sales and technical representatives.

## TEMPERATURE CHARACTERISTICS

Specification	Data
Temperature Coefficient (Pmax)	-0.37 % / °C
Temperature Coefficient (Voc)	-0.29 % / °C
Temperature Coefficient (Isc)	0.05 % / °C
Nominal Module Operating Temperature	41 ± 3°C

## PARTNER SECTION



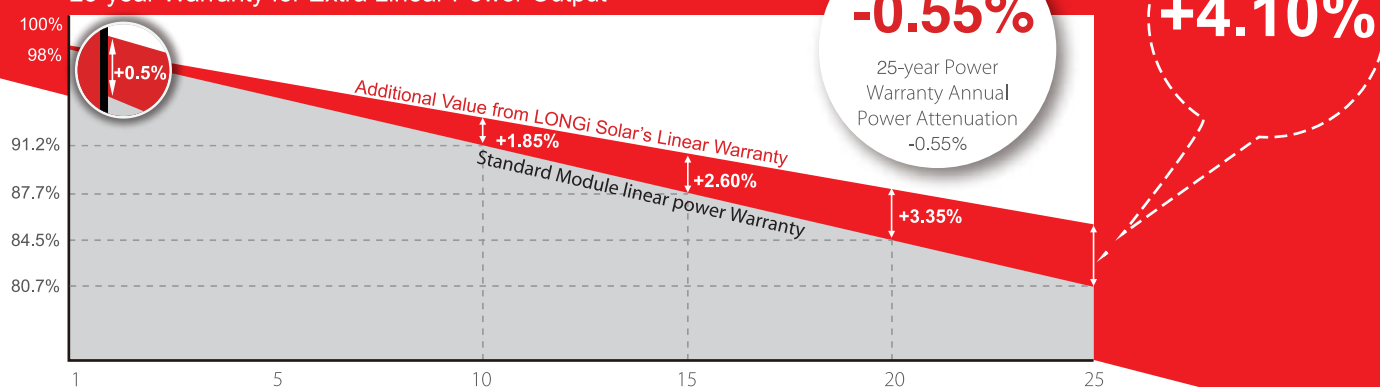


# LR6-72BK 325~345M

**High Efficiency Mono Technology  
(72C/All Black Module)**  
with advanced 5BB design to improve  
power output

*Aesthetic appearance with black frame and  
backsheet, best suited for rooftop installation*

10-year Warranty for Materials and Processing;  
25-year Warranty for Extra Linear Power Output



## Complete System and Product Certifications

IEC 61215, IEC61730, UL1703  
ISO 9001:2008: ISO Quality Management System  
ISO 14001: 2004: ISO Environment Management System  
TS62941: Guideline for module design qualification and type approval  
OHSAS 18001: 2007 Occupational Health and Safety



\* Specifications subject to technical changes and tests. LONGi Solar reserves the right of interpretation.

**Positive power tolerance** (0 ~ +5W) guaranteed

**High module conversion efficiency** (up to 17.8%)

**Better energy yield** with excellent low irradiance performance and temperature coefficient

**Solid PID resistance** ensured by solar cell process optimization and careful module BOM selection

**Adaptable to harsh environment:** passed rigorous salt mist and ammonia tests

**Robust frame** (40mm) withstands mechanical loading of 5400Pa for snow load on front and 2400Pa for wind load on rear side

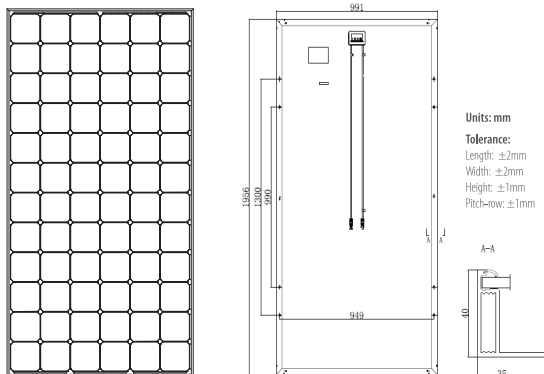
# LONGi Solar

Room 201, Building 8, Sandhill Plaza, Lane 2290, Zuchongzhi Road, Pudong District, Shanghai, 201203  
Tel: + 86-21-61047332 Fax: +86-21-61047377 E-mail: module@longi-silicon.com  
Facebook: www.facebook.com/LONGi Solar

Note: Due to continuous technical innovation, R&D and improvement, technical data above mentioned may be of modification accordingly. LONGi Solar have the sole right to make such modification at anytime without further notice; Demanding party shall request for the latest datasheet for such as contract need, and make it a consisting and binding part of lawful documentation duly signed by both parties.

# LR6-72BK 325~345M

## Design (mm)



## Mechanical Parameters

Cell Orientation: 72 (6×12)  
 Junction Box: IP67, three diodes  
 Output Cable: 4mm<sup>2</sup>, 1200mm in length  
 Connector: MC4 or MC4 comparable  
 Weight: 22.5kg  
 Dimension: 1956×991×40mm  
 Packaging: 26pcs per pallet

## Operating Parameters

Operational Temperature: -40 °C ~ +85 °C  
 Power Output Tolerance: 0 ~ +5 W  
 Maximum System Voltage: DC1000V (IEC&UL)  
 Maximum Series Fuse Rating: 20A  
 Nominal Operating Cell Temperature: 45±2 °C  
 Application Class: Class A

## Electrical Characteristics

Test uncertainty for Pmax: ±3%

Model Number	LR6-72BK-325M		LR6-72BK-330M		LR6-72BK-335M		LR6-72BK-340M		LR6-72BK-345M	
Testing Condition	STC	NOCT	STC	NOCT	STC	NOCT	STC	NOCT	STC	NOCT
Maximum Power (Pmax/W)	325	235.0	330	238.6	335	242.2	340	245.8	345	249.4
Open Circuit Voltage (Voc/V)	46.0	42.3	46.1	42.4	46.3	42.6	46.5	42.8	46.7	43.0
Short Circuit Current (Isc/A)	9.18	7.40	9.30	7.50	9.40	7.58	9.49	7.65	9.58	7.72
Voltage at Maximum Power (Vmp/V)	37.5	33.9	37.6	34.0	37.7	34.1	37.9	34.2	38.1	34.5
Current at Maximum Power (Imp/A)	8.67	6.94	8.78	7.02	8.89	7.11	8.97	7.18	9.05	7.24
Module Efficiency(%)	16.8		17.0		17.3		17.5		17.8	

STC (Standard Testing Conditions): Irradiance 1000W/m<sup>2</sup>, Cell Temperature 25 °C, Spectra at AM1.5

NOCT (Nominal Operating Cell Temperature): Irradiance 800W/m<sup>2</sup>, Ambient Temperature 20 °C, Spectra at AM1.5, Wind at 1m/s

## Temperature Ratings ( STC )

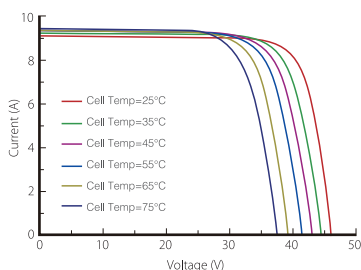
Temperature Coefficient of Isc: +0.059%/°C  
 Temperature Coefficient of Voc: -0.330%/°C  
 Temperature Coefficient of Pmax: -0.410%/°C

## Mechanical Loading

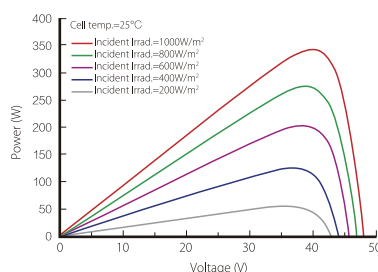
Front Side Maximum Static Loading: 5400Pa  
 Rear Side Maximum Static Loading: 2400Pa  
 Hailstone Test: 25mm Hailstone at the speed of 23m/s

## I-V Curve

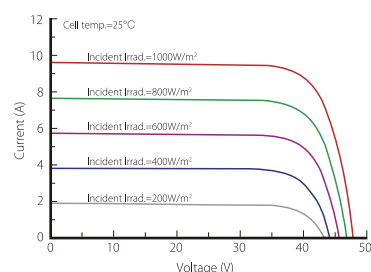
Current-Voltage Curve (LR6-72BK-340M)



Power-Voltage Curve (LR6-72BK-340M)



Current-Voltage Curve (LR6-72BK-340M)



**LONGi Solar**

Room 201, Building 8, Sandhill Plaza, Lane 2290, Zuchongzhi Road, Pudong District, Shanghai, 201203  
 Tel: + 86-21-61047332 Fax: +86-21-61047377 E-mail: module@longi-silicon.com  
 Facebook: www.facebook.com/LONGi Solar

Note: Due to continuous technical innovation, R&D and improvement, technical data above mentioned may be of modification accordingly. LONGi Solar have the sole right to make such modification at anytime without further notice; Demanding party shall request for the latest datasheet for such as contract need, and make it a consisting and binding part of lawful documentation duly signed by both parties.