

2026 Wednesday Evening Races

Jackson Park Yacht Club
June 3-September 16, 2026

NOTICE OF RACE

RULES: The race shall be governed by the Racing Rules of Sailing 2025-2028 as modified by verbal Special Sailing Instructions issued prior to each race.

ELIGIBILITY: The regatta is open to all members in good standing of the Jackson Park Yacht Club or any boat whose primary harbor is Jackson Park Outer harbor or 31st Street harbor, who have paid the prescribed fee of \$100 per racing season. Eligible individuals may enter using the online registration form at https://jpyc.railmeets.com/regattas/wednesday_night_2026

ENTRIES: Sections will be Spinnaker and Jib and Main only (JAM). It is strongly recommended, but not required, that each boat have a valid 2026 MWPHRF Handicap Certificate, either Standard or Cruiser (more information may be found at <http://mwphrf.org>). Each boat with such a Certificate must race in compliance with that Certificate. Boats without a valid 2026 MWPHRF certificate will be assigned handicaps by the Race Committee. Boats assigned handicaps cannot protest, nor seek redress for, their assigned handicaps. This changes RRS 60 and 61.

SERIES: The Wednesday evenings race series shall consist of the Hot Dog, Lunar, Twilight, Wild Card and 100 Boats on a Beer Can races. The first series will begin June 3, 2026. The Hot Dog, Lunar and Twilight will be four races in succession on Wednesday evenings with a makeup race if any of the four races are not sailed or abandoned. If all of the regularly scheduled races are held in a series, the makeup race will not be sailed. The 100 Boats on a Beer Can will be held on Tuesday, August 4th and Wednesday, August 5th. Any of the other sets of races will be temporarily suspended on August 5th and then resume on August 12th. The Wild Card series will consist of two Wednesday evening races only as the last races of the season. The season ends when all series races are completed or by agreement of the participants. The season will not continue after September 16, 2026.

SAILING INSTRUCTIONS: All yachts will race under the RRS 2025-2028. The RC boat for the evening will be responsible for setting the course and defining the start and finish lines. Course changes will also be handled by the RC boat. The RC boat for the evening will be appointed by the Chair of the Racing Committee, if present, or from volunteers who come forward.

NOTICES: Notices shall be posted on the Race Committee notice board on the lower level of the Jackson Park Yacht Club and online at https://jpyc.railmeets.com/regattas/wednesday_night_2026, as they are made. Changes will also be broadcast on the water on VHF channel 72. Competitors should monitor the VHF channel assigned.

EQUIPMENT: Each yacht shall carry a radio capable of receiving and transmitting on VHF channel 72. Each boat shall also carry its red protest flag. PFDs as required by the USCG are recommended to be worn at all times. All other USCG required equipment must be carried and maintained.

RACING AREA & COURSES: The racing area will be on the waters of Lake Michigan at a location announced prior to each race. The courses used will consist of government marks, club tetras or tomatoes. A list of some commonly used marks are included in Appendix B. The sequence of marks and the side to which they are taken will be discussed at the skippers meeting.

STARTING AREAS: Unless otherwise announced the starting area shall be North of Casino Pier. The approximate location is listed in Appendix B. Race Committee will post a notice on the online notice board at least 24 hours prior to the scheduled first warning in the event that the starting area will be moved to the 31st Street Starting Area (approximate location is listed in Appendix B)

SCORING: Time on time (ToT) scoring will be applied using the following formula. ToT correction factor = $650 / (550 + \text{MWP} \text{HRF Rating})$. Spinnaker entries will be scored using their DHCP rating and JAM boats will be scored using their NSHCP rating.

The scoring system for each set (Hot Dog, Lunar and Twilight) and the overall series will utilize the High-Point Percentage Scoring system detailed as follows. To qualify for inclusion in the final series results a competitor shall compete in (i.e., come to the starting area for) at least 50 percent of the completed races. The score for each boat finishing a race and not thereafter retiring, being penalized or given redress will be determined as listed in Appendix A, where 'N' will be the number of boats that compete in a particular race. All other boats that compete in that race, including any that finish and thereafter retire or are disqualified, will score 0 points. Boats that do not compete in that race (DNC) will not be scored. The series score for each boat will be a percentage calculated as follows: divide the sum of her race scores by the sum of the points she would have scored if she had placed first in every race in which she competed; multiply the result by 100. The qualified boat with the highest series score is the winner, and others are ranked accordingly. Race ties will be scored using rule A7. Series ties will be broken using rule A8.1. Rules A1, A3, A5, A6, A9 and A10 also apply.

SKIPPER'S MEETING: An orientation meeting will be held at 1830 on Wednesday, May 27th at the main JPYC Clubhouse, 6400 S. Promontory Drive.

START TIME: The first warning signal for Wednesday evening races will be made at 1855.

CHECK IN: Any boat that intends to race should check in with the Race Committee signal boat at least 1 minute prior to the first warning.

TIME LIMIT: The time limit for the races will be 2130 plus additional time for a postponed start. Any boat that does not finish by that time will be scored DNF.

PROTESTS: Official protests will be handled in accordance with the RRS 2025-2028. Time limit to file a protest will be 60 minutes after the last boat finishes.

PRIZES: At the end of the season plaques or other prizes will be presented to any boat that competed in a minimum of four races. Certificates will be awarded to other participants that raced in fewer than four events. The overall winner in each section (Spinnaker and JAM) will be awarded a special plaque or prize.

RISK STATEMENT: RRS 3 states: 'The responsibility for a boat's decision to participate in a race or to continue to race is hers alone.' By participating in this event each competitor agrees and acknowledges that sailing is a potentially dangerous activity with inherent risks. These risks include strong winds and rough seas, sudden changes in weather, failure of equipment, boat handling errors, poor seamanship by other boats, loss of balance on an unstable platform and fatigue resulting in increased risk of injury. **Inherent in the sport of sailing is the risk of permanent, catastrophic injury or death by drowning, trauma, hypothermia or other causes.**

Direct all inquiries to: racing@jacksonparkyachtclub.org

Appendix A: Race Scores

Define 'N' to be the number of boats that compete in a particular race.

Finishing place	Points
First	N
Second	N-1
Third	N-2
Fourth	N-3
Each place thereafter	Subtract one (1) point

Appendix B: Coordinates of Common Marks

End of Casino Pier:	N 41° 47.10' W 87° 34.10'
68th St. Crib:	N 41° 47.18' W 87° 31.88'
Bell buoy:	N 41° 48.41' W 87° 32.08'
N8 buoy	N 41° 45.57' W 87° 31.74'
31st St. Starting Area	N 41° 49.80' W 87° 34.50'

Appendix C: Possible Courses

The following are a list of possible courses that may be used. The Race Committee may use other courses as they deem appropriate and will announce the course(s) at the Skippers' Meeting.

Course A (depicted as red line) - Total approximate distance: 3.2 NMi

Mark	Approx. Location	Approx. Course	Approx. Dist.	Rounding
Start (Casino Pier)	N 41° 47.10' W 87° 34.10'	-	-	-
68th Street Crib	N 41° 47.18' W 87° 31.88'	087°	1.6 NMi	To Port
Finish (Casino Pier)	N 41° 47.10' W 87° 34.10'	267°	1.6 NMi	-

Course B (depicted as green line) - Total approximate distance: 4.9 NMi

Mark	Approx. Location	Approx. Course	Approx. Dist.	Rounding
Start (Casino Pier)	N 41° 47.10' W 87° 34.10'	-	-	-
68th Street Crib	N 41° 47.18' W 87° 31.88'	087°	1.6 NM	To Port
Bell buoy	N 41° 48.41' W 87° 32.08'	350°	1.3 NM	To Port
Finish (Casino Pier)	N 41° 47.10' W 87° 34.10'	228°	2.0 NM	-

Course C (depicted as blue line) - Total approximate distance: 5.5 NMi

Mark	Approx. Location	Approx. Course	Approx. Dist.	Rounding
Start (Casino Pier)	N 41° 47.10' W 87° 34.10'	-	-	-
N8 buoy	N 41° 45.57' W 87° 31.74'	131°	2.3 NM	To Port
68th Street Crib	N 41° 47.18' W 87° 31.88'	356°	1.6 NM	To Port
Finish (Casino Pier)	N 41° 47.10' W 87° 34.10'	267°	1.6 NM	-

Course D (depicted as purple line) - Total approximate distance: 4.0 NMi

Mark	Approx. Location	Approx. Course	Approx. Dist.	Rounding
Start (Casino Pier)	N 41° 47.10' W 87° 34.10'	-	-	-
Bell buoy	N 41° 48.41' W 87° 32.08'	048°	2.0 NM	To Port
Finish (Casino Pier)	N 41° 47.10' W 87° 34.10'	228°	2.0 NM	-

Course E (depicted as yellow line) - Total approximate distance: 4.6 NMi

Mark	Approx. Location	Approx. Course	Approx. Dist.	Rounding
Start (31st St. SA)	N 41° 49.80' W 87° 34.50'	-	-	-
Bell buoy	N 41° 48.41' W 87° 32.08'	128°	2.3 NM	To Port
Finish (31st St. SA)	N 41° 49.80' W 87° 34.50'	308°	2.3 NM	-

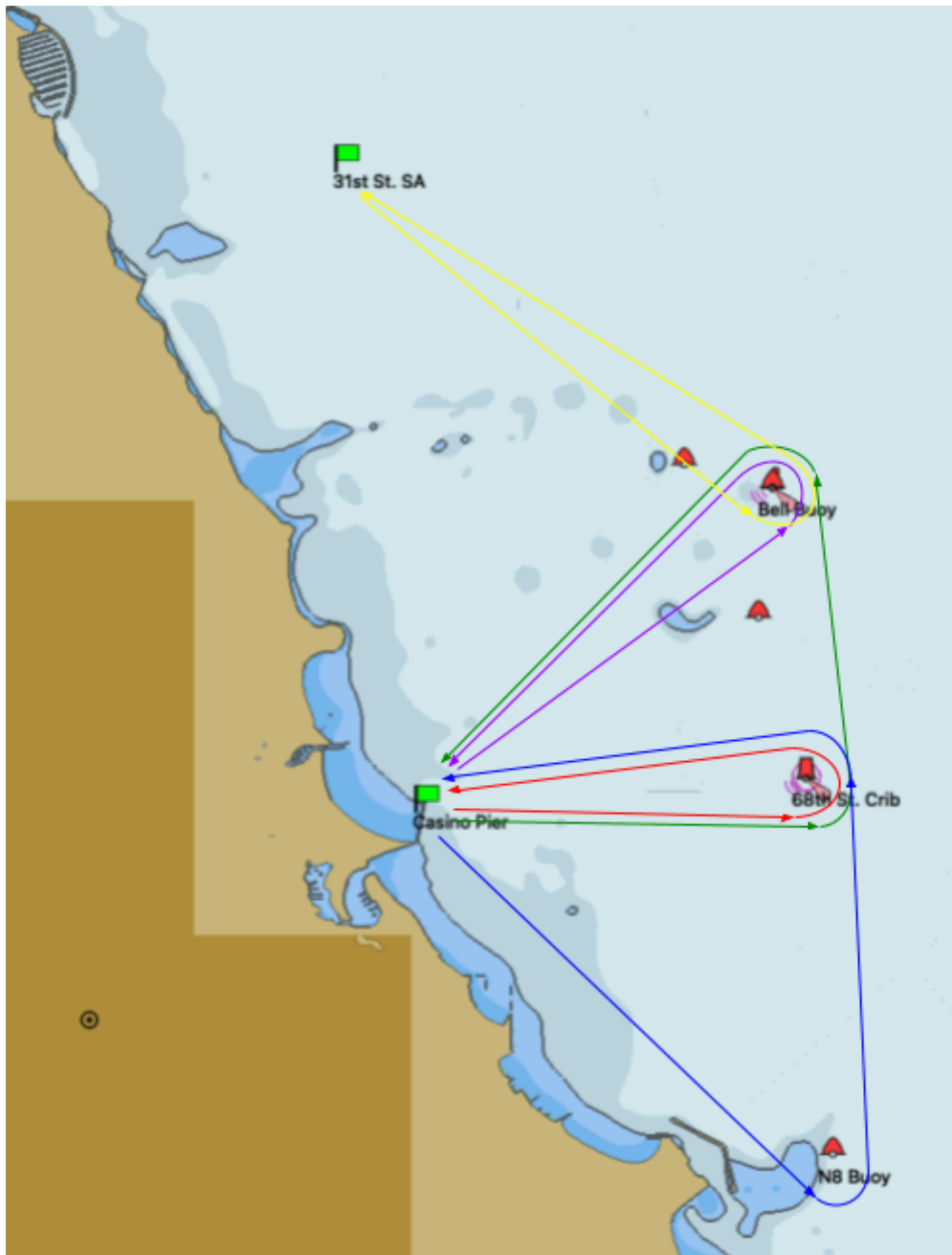


Diagram of courses listed in Appendix C.
This diagram is NOT to be used for navigational purposes.