

Young Audiences / Arts for Learning

2601 North Howard Street, Suite 320
Baltimore, Maryland 21218

PHONE: 410.837-7577

EMAIL: info@yamd.org

ONLINE: www.yamd.org

SPECIAL

STAFF

STACIE SANDERS EVANS
Executive Director
stacie@yamd.org

JENNIFER ANDIORIO
Director of Development
jennifer@yamd.org

VANCETO BLYDEN
Education Associate
vanceto@yamd.org

PAT CRUZ
Education Director
pat@yamd.org

KURTIS DONNELLY
Program Director
kurtis@yamd.org

MEAGHAN FARNO
Communications Manager
meaghan@yamd.org

LIZ GALUARDI
Residency Coordinator
liz@yamd.org

JESSICA PORTER
Special Projects and
Residency Coordinator
jessica@yamd.org

CARA SCHAEFER
Assistant to the
Executive Director/
Operations Manager
cara@yamd.org

DONNA SHERMAN
Program Coordinator
donna@yamd.org

LAUREN WEBB
Grants Manager
lauren@yamd.org

JAN WUENSCHELL
Finance Manager
jan@yamd.org

BOARD MEMBERS

BILL BUCKNER,
President

E. SCOTT JOHNSON,
Vice President

THOMAS J. SESSA,
Vice President

GREGORY BLAKE,
Treasurer

SHEELAGH M. ALLSTON,
Secretary

CANDICE BUCKNER

CHRIS DOHERTY

ELIZABETH ENGLISH

JASON S. KISSEL

LOIS MARK

CECILIA MEISNER

SUZANNE B. OWENS

ERIC M. PRIPSTEIN

MARK ROBINSON

MICHAEL STEIN

AMAZING!

2011 ANNUAL REPORT



Young
Audiences
Arts for
Learning

Maryland

OUR VISION

WE ENVISION A MARYLAND WHERE THE ARTS ARE VALUED FOR THEIR CAPACITY TO TRANSFORM LIVES, AND WHERE EVERY STUDENT IS IMMERSED IN OPPORTUNITIES TO IMAGINE, TO CREATE, AND TO REALIZE THEIR FULL POTENTIAL THROUGH THE ARTS.



Letter from the Executive Director

I remember my first assembly program in second grade. We piled into the school gym to see these big metal trash cans on the stage. I thought, “What in the world?” Then I was introduced to the steel drum and a world that was bigger than my own.

Young Audiences believes that the arts are the most effective tool schools have for creating engaging classrooms. We envision a day when every student will have the opportunity to imagine, to create, and to realize their full potential through the arts.

To achieve this vision, we:

- ✧ Bring the arts into schools by training and supporting the very best performing and visual artists in our communities.
- ✧ Train teachers of all grades and subject areas to use the arts to engage students in the learning process.
- ✧ Ensure high-poverty and rural communities have equitable access to the arts.

There is no other arts-in-education organization that can match the depth and breadth of our reach, which includes partnerships with 400 schools and community sites in 23 Maryland counties, impacting the education of nearly 200,000 students each year.

In October 2010 at our first Impact Breakfast, we unveiled our three-year plan to expand our reach into an additional 100 schools, serving 25,000 more students a year. Thanks to you, our donors, including our newly formed Sunburst Society, we were able to increase our reach to high-poverty and rural schools by 20 percent and provide 30,000 more hours of learning through the arts.

But there is more work to be done. I hope you will continue to join me in ensuring every student has what he or she needs to be successful in school and in life.

Now, I would like you to see the impact you helped us create.



Stacie Sanders Evans, Executive Director



SHINING OUR LIGHT ON THE FUTURE

This year, your support has nurtured Young Audiences, allowing us to grow to motivate more students, inspire more educators, and support more professional artists than ever before. In 2011, Young Audiences provided more than 4,000 arts experiences, impacting 200,000 Maryland schoolchildren, families, and educators, regardless of their resources—an increase of more than 25 percent compared to last year.

This year we partnered with 400 organizations to provide enriching and artistically excellent educational experiences to youth across the state. Partner organizations included schools, libraries, universities, and cultural institutions. Young Audiences provided extended residencies for thousands of Baltimore City students in the Summer Academies and Extended Learning Programs.



artists

All of our artists are highly-skilled professional teaching artists. They are evaluated and selected annually based on their artistic excellence and ability to connect with young people. Each artist takes part in a comprehensive application and audition process to ensure high-quality artistry. Each artists' program addresses one or more of the standards outlined in the Maryland State Curriculum and comes with a free teacher guide that connects the artistic experience to classroom curriculum and includes sample lesson plans, activities, and resources.

In fiscal year 2011, Young Audiences partnered with 100 professional artists to provide employment opportunities totaling \$563,175 in wages earned. These artists in turn provided meaningful and in-depth arts experiences in a variety of disciplines, including music, theatre, dance, and visual arts.



"You were so very kind to provide us with the majority of funding to allow us to bring music and theater to our students. What a wonderful opportunity to expose our students to great quality of music and storytelling. We have spent many hours playing the CDs that Milkshake gave to us. The students like to listen and dance to the music. Arianna Ross and her Monkey Tales inspired everyone's imagination. When I walk into the rooms, I hear fantastic stories that the children have thought about in detail. Thank you so much!" — **Lynne E. Duff**, Director of St. Charles Children's Learning Center at the College of Southern Maryland

access for all

In fiscal year 2011, Young Audiences reserved more than \$200,000 of funds raised to provide deeply-discounted programs for underserved, special needs, and Title I schools, through the Access for All and Rural Access for All initiatives. These signature programs significantly increased our work with inner-city and rural schools by lowering the financial barrier. Performances and workshops covered all artistic disciplines, ranging from ceramic mural workshops to slam poetry performances.

Now in its fourth year, Access for All allowed Young Audiences to serve more than 10,000 youth in 43 high-need schools in Baltimore City, where at least 85 percent of the student body is eligible for free and reduced-price lunches. Program funding secured by Young Audiences was matched with funds from the Baltimore City school district and the Maryland State Arts Council.

Based on the Access for All model, Rural Access allows Young Audiences to underwrite up to half the cost of programming for schools and community organizations outside the Baltimore-Washington corridor. These areas lack the concentration of teaching artists found in urban communities, and the associated mileage for booking artists in more remote areas can be prohibitive.

In fiscal year 2010-2011, 17,000 youth, families, and educators were able to experience a performance, take part in a workshop, or participate in an artist residency. Rural Access outreach produced a 32 percent growth in the number of schools and community organizations served, and a 12 percent growth in students served.



assemblies and performances

Thousands of students across Maryland learned about teamwork and collaboration, tapped into their creativity and imagination, and increased their understanding of other cultures through upbeat and motivational in-school assembly performances led by professional artists and ensembles, like Linda Fang. Linda's witty, humorous, and thought provoking performances are an excellent way to get students excited about history, language arts, and theatre, while building essential 21st Century skills.

In fiscal year 2011, Young Audiences provided 821 live performances by professional artists to introduce students to a variety of artistic disciplines and cultures.

"I saw you perform at Geneva School when I was only four years old. But I always remember you. Now I am nine. Your book the Ch'i-lin Purse is a wonderful book. I read it again and again. How can I ever forget you?"

Adam, Student,
Wayside Elementary



residencies



In fiscal year 2011, Young Audiences provided 146 in-depth artist-in-residence programs, totaling 3,054 workshops and performances, that afforded student participants quality time with a teaching artist and a more substantial and sequential learning experience in and through the arts.

"I thought I couldn't make beats out of random things," said Amari Roberts, a seventh-grade student at Imagine Discovery Public Charter School in Baltimore. "But I think I did pretty well. You can make a beat out of anything."

Amari learned that everyday objects, like pencils, barrels, and her own feet, can be used as instruments during a recent residency at Imagine Discovery. The residency was one of four artist-in-residence programs at Maryland middle schools, made possible by the MetLife Learning for Life Grant Program.



African dancer and musician Kwame Opare taught Amari and her classmates about rhythm through music and step dance. It was also an opportunity for Kwame to teach students about other subjects, including African history, science, and—most importantly—how to work together.

"I learned that I could do anything that is out of the box," Amari said.

"I didn't think I would be learning how to make beats on unconventional things, or that it would involve science when you make music."

KWAME OPARE



PROFESSIONAL DEVELOPMENT FOR EDUCATORS

This year, Young Audiences provided more than 300 hours of professional development opportunities for 852 teachers, equipping them with the skills to use the arts to engage all types of learners in their classrooms. Young Audiences remains committed to providing professional development and student arts experiences that align with schools' curriculum needs and naturally connect to lesson plans.

Young Audiences partnered with the Harford County Public Schools Title I office to provide year-long training in arts integration for teachers at schools that need assistance making adequate yearly progress on state standardized tests. An addition to the ongoing 21st Century Institutes in both Harford and Anne Arundel Counties, these professional development seminars provided training in arts integration to educators, focusing on how art can be used to enhance the skills and knowledge students need to succeed in school, work, and life in the 21st Century.

teaching artist institute

TESTIMONIAL BY MAX BENT, BEATBOXER
AND YOUNG AUDIENCES ROSTER ARTIST

Prior to becoming a Young Audiences artist, I spent seven years as a high school and middle school science teacher. During my first year teaching I was floundering. I started bringing music equipment to an afterschool club—and although I didn't know what arts integration was at the time—the music helped me create a bond with the students, which helped me connect with them in the classroom as well.

After leaving the public school system, I discovered the Teaching Artist Institute (TAI). I didn't know what to expect, but after completing the program, my passion for teaching and empowering young people has been restored.

TAI has been the spark to a flame in my heart for sharing my art to provide our children with a meaningful education. The rigorous curriculum and quality instructors of TAI have given me the guidance necessary to discover how I can reach my peak as an educator.

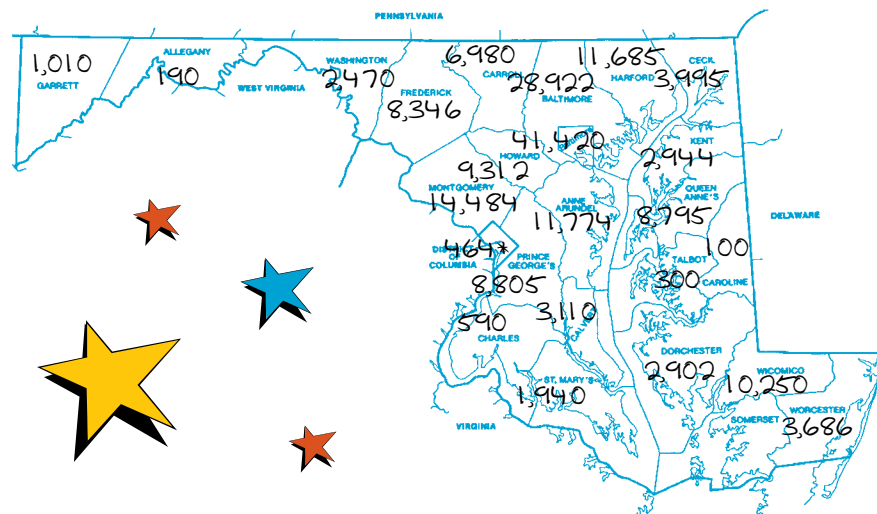
I have seen with my own eyes, proof that the arts are a powerful teaching tool. Through my experiences, when academic and fine arts objectives are melded into one seamless goal, students are required to adapt, improvise, and solve problems. Students **MUST** collaborate.

Without TAI, I would have never had the chance to rediscover my passion for teaching. I thank the people behind this program from the bottom of my heart.

This year TAI served 20 artists and 20 classroom teachers with more than 80 hours of training focused on incorporating 21st Century Skills into the classroom. These educators will reach approximately 500 students during this school year alone, and will continue to benefit students throughout their career.



STUDENTS SERVED BY YOUNG AUDIENCES BETWEEN JULY 1, 2010 AND JUNE 30, 2011.



- ✧ Served 204,151 students, educators, and families in 23 counties across Maryland.
- ✧ Provided 821 live performances by professional artists to introduce students to a variety of artistic disciplines and cultures.
- ✧ 185,907 total students were served—one in five Maryland students.
- ✧ With your support, Young Audiences could provide invaluable arts experiences to the 80 percent of Maryland schoolchildren we have not yet reached.
- ✧ 402 total schools, libraries, or community centers were served.
- ✧ 300 hours of professional development were presented to artists and educators.
- ✧ 852 classroom teachers and teaching artists benefited from professional development programs.

Generous individual, corporate, government, and foundation donors, like you, make the work of Young Audiences possible. THANK YOU!

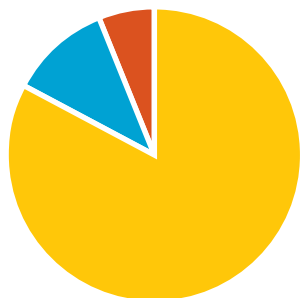
* Number includes Washington D.C. and all other out-of-state students served.

Ya BY the numbers



Young Audiences Income Sources:

- ☆ **Public Contributed Income:** 8%
(State and Local Government)
- ☆ **Private Contributed Income:** 41%
(Foundations, Corporations,
Private Donations, and Special
Event Net Income)
- ☆ **Program Income:** 51%

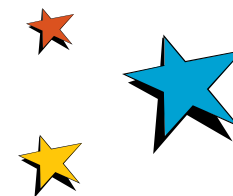


Young Audiences Expenses Breakdown:

- ☆ **Program Expenses:** 83%
- ☆ **Fundraising Expenses:** 11%
- ☆ **Administration Expenses:** 6%

- ☆ Young Audiences' total operating budget was \$1.5 million during the 2010-2011 fiscal year.
- ☆ Young Audiences is committed to fiscal responsibility and to providing Maryland youth access to the arts, and works diligently to raise the funds to ensure our vision is one day reached.

comments



Gayle Danley

I just want to say that the way that you can express your emotions and make it so people can feel how you feel is...just wonderful.

EMMA, Seventh Grade, Harper's Choice Middle

DishiBem

I think your writing is better than other books because your writing is actually understandable to a middle schooler.

DONOVAN, Fifth Grade, Edgewood Elm Elementary

Anna Menendez

I really enjoyed it when you showed us the Bull Dance and the Flamenco. I hope you can come back to Rockledge another time. I hope I can become a great dancer too!

VANESSA, Fourth Grade, Rockledge Elementary

Ssunna

You are the best speaker I have ever seen, not just in this school, but in any of the six schools I have attended. Each of your songs was something that you could get up and dance to.

TONY, Phoenix Center of Annapolis

Urgeworks

I enjoyed your show. It was funny, informative, and a lot of other stuff. The real reason I'm sending this message is because I want to be a successful game developer. Overall, your show inspired me to do great things. Thank you." **ALEX**

Harford County Professional Development

"I must admit that the ideas that I have received from the artists are clearly a different way of thinking. The best response comes from my students when we incorporate the arts-integrated lessons in our classroom. They are so engaged and really enjoy learning in this way."

DAWN, Harford County Teacher

partners

SERVED JULY 1, 2010 – JUNE 30, 2011



ALLEGANY COUNTY

Allegany Co. Library Washington St. Branch
Flintstone Elementary

ANNE ARUNDEL COUNTY

Aleph Bet Jewish Day School
Annapolis Branch A.A. Co. Library
Annapolis Elementary
Anne Arundel County Public Schools
Arnold Elementary
Barnes and Noble, Bowie Town Center
Bodkin Elementary
Broadneck Branch A.A.Co. Library
Brock Bridge Elementary
Brooklyn Park Middle School
BWI Double Tree Inn (Formerly Holiday Inn)
Central Elementary
Chesapeake Academy
Crofton Branch A.A.Co. Library
Crofton Elementary
Crofton Meadows Elementary
Davidsonville Elementary School
Eastport Annapolis Neck Branch A.A.Co. Library
Four Seasons Elementary School
Imagination Vacation
Indian Creek Lower/Middle School
Jessup Elementary
Lake Shore Elementary
Magothy River Middle School
Maryland City Branch A.A. Co. Library
Maryland City Elementary PTA
Millersville Elementary
Monsignor Slade Catholic School
Mountain Road Branch A.A. Co. Library
North County Branch A.A.Co. Library
North Glen Elementary
Park Elementary
Pathways School - Anne Arundel
Pre School for the Arts at St. Anne's School
Richard Henry Lee Elementary
Rippling Woods Elementary School
Seven Oaks Elementary School (A.A.Co)
Severna Park Branch A.A.Co. Library

South Shore Elementary
Southern Middle School
Southern Middle School
St. Anne's School
The Key School
The Phoenix Center Annapolis
Wiley H. Bates Middle School

BALTIMORE CITY

#007 Cecil Elementary
#076 Francis Scott Key Elem. & Middle
#105 Moravia Park Elementary Middle School
#11 Eutaw-Marshburn Elementary
#130 Booker T. Washington Middle School
#15 Stadium School
#21 Hilton Elementary
#213 Govans Elementary
#221 Mt. Washington Elementary
#224 Grove Park Elementary
#232 Thomas Jefferson Elementary
#233 Roland Park Elementary/Middle
#236 Hamilton Elementary/Middle School
#237 Highlandtown Elementary
#241 Fallstaff Middle School
#243 Armistead Gardens Elementary
#247 Cross Country Elementary
#256 Calvin Rodwell Elementary School
#260 Frederick Elementary
#262 Empowerment Academy
#307 Claremont High School
#314 Sharp Leadenhall Elementary
#401 Northwestern High School
#410 Mergenthaler Vocational Technical
#45 Federal Hill Preparatory School
#66 Mount Royal Elementary/Middle
#84 Thomas Johnson Elementary/Middle
#98 Samuel F. B. Morse Elementary
ACCE Academy
Baltimore City College High School
Baltimore Leadership School for Young Women
Baltimore Montessori Public Charter School

Baltimore Museum of Art
Bluford Drew Jemison Academy
Bluford Drew Jemison Math Science Technology Academy
Brown Memorial Tutorial Program
Bryn Mawr School / Middle Center Stage
City Neighbors Hamilton Charter School
Coldstream Park Elementary/Middle
Commodore John Rogers Elementary
Curtis Bay Elementary
Dallas F. Nicholas Elementary
Dickey Hill Elementary/Middle School
Edgecombe Circle Elementary/Middle
Enoch Pratt Free Library Forest Park Branch
Enoch Pratt Free Library Govans Branch
Enoch Pratt Free Library Herring Run Branch
Enoch Pratt Free Library Northwood Branch
Enoch Pratt Southeast Anchor Branch
Franklin Square Elem/Middle
Friendship Academy of Engineering and Technology
Friendship Academy of Science and Technology
Garrett Heights Elementary
Gilman School (Learning Camp)
Glenmount Elementary/Middle
Guilford Elementary/Middle School
Hampden Elementary Middle School
Hampden Family Center
Harford Heights Elementary
Harlem Park Elementary
Hazelwood Elementary
Highlandtown Elementary/Middle #215
Holabird Elementary
Hope Academy
John Ruhrah Elementary
Johnston Square Elementary
KIPP Ujima Village Academy
Lakewood Elementary
Maree Garnett Farring Elementary Middle School
Margaret Brent Elementary
Mary E. Rodman Elementary

Mi Segunda Casa - Education-Based Latino Outreach
Mt. St. Joseph High School
National Academy Foundation
New Era Academy High #422
New Song Academy
Northwood Appold Community Academy #2
Office of Teaching and Learning
Oheb Shalom Learning Ladder
Goodnow Community Center
Patterson Park Public Charter School
Paul's Place Outreach Center
REACH Partnership School
Rosemont Elementary Middle School
Southwest Baltimore Charter School
Steuart Hill Academic Academy
Tench Tilghman Elementary/Middle School
The Center Club
Turnbridge Public Charter School
Walters Art Museum
Windsor Hills Elementary/Middle School
Wolfe Street Academy
Women's Housing Coalition

BALTIMORE COUNTY

Arbutus Middle School
Baltimore County Commission on Arts and Sciences
Baltimore Highlands Elementary (BCCAS)
Bryn Mawr School / Lower
Camp Greentree at Mars Estates Elementary
Camp Honeybee at White Oak Elementary (BCCAS)
Carver Center (BCCAS)
Catonsville Elementary
Catonsville Middle
Chadwick Elementary
Chapel Hill Elementary
Chase Elementary
Creative Kids - Cockeysville
Dogwood Elementary (BCCAS)
Dundalk Middle School
Eastwood Elementary Magnet School
Edgemere Elementary (BCCAS)
Edgmere SRC
Elmwood Elementary
Featherbed Lane Elementary
Franklin Elementary
Franklin Middle School
Fullerton Community Building (BCCAS)
Fullerton Elementary (BCCAS)
Hadassah Lunch & Learn
Hampton Elementary
Harford Hills Elementary (BCCAS)

Inverness Center (BCCAS)
Krieger Schechter Day School
Loch Raven Center (BCCAS)
Loyola Blakefield
Lutherville Lab Elementary School
Milbrook Elementary
New Horizons/Chatworth (BCCAS)
Oheb Shalom Learning Ladder
Oliver Beach Elementary (BCCAS)
Owings Mills Elementary
Park School
Performing Arts Camp (BCCAS)
Pikesville Middle School
Pinewood Elementary
Reisterstown Elementary
Ridgely Middle School
Rodgers Forge Elementary
Southwest Academy
St. James' Academy
Stoneleigh Elementary
The Chatsworth School
Victory Villa Community Center (BCCAS)
Vincent Farm Elementary
West Towson Elementary
White Oak School
Woodlawn Community Center (BCCAS)

CALVERT COUNTY

Appeal Elementary
Dowell Elementary School
Huntingtown United Methodist Church
Mutual Elementary
The Tidewater School
Windy Hill Elementary

CAROLINE COUNTY

Caroline County Public Library

CARROLL COUNTY
Cranberry Station Elementary
Eldersburg Elementary
Freedom Elementary
Friendship Valley Elementary
Mt. Airy Middle School
New Windsor Middle School
Piney Ridge Elementary
Sandymount Elementary
Sykesville Middle School
Westminster Elementary
William Winchester Elementary
Winfield Elementary

CECIL COUNTY

Cecil County Public Schools Board of Ed.
Cecilton Elementary
Charlestown Elementary
Elk Neck Elementary
North East Elementary
Perryville Elementary

Rising Sun Elementary
The Tome School

CHARLES COUNTY
Archbishop Neale School
St. Charles Children's Learning Center at the College of Southern Md.

DORCHESTER COUNTY

Dorchester County Public Library - Cambridge Branch
Hurlock Elementary
Maple Elementary
Sandy Hill Elementary
The Judy Center (Dorchester Co.)
Vienna Elementary
Warwick Elementary

FREDERICK COUNTY

Brunswick Elementary
Carroll Manor Elementary
Crestwood Middle School
Emmitsburg Elementary
Green Valley Elementary
Liberty Elementary (Frederick Co.)
Middletown Middle School
Middletown Primary School
New Market Elementary
Oakdale Elementary
Orchard Grove Elementary
Sabillasville Elementary
Trinity School of Frederick
Wolfsville Elementary

GARRETT COUNTY

Accident Elementary
Bloomington Elementary
Broad Ford Elementary
Dennett Road Elementary
Garrett College
Grantsville Elementary

HARFORD COUNTY

Aberdeen Middle School
Abingdon Elementary
Edgewood Elementary
Edgewood Middle School
Emmorton Elementary
Harford County Public School
Harford Day School
Havre de Grace Elementary
Homestead Wakefield Elementary
Magnolia Elementary (Joppa)
Mountain Christian School
Richlin Ballroom
Ring Factory Elementary
William Paca Old Post Road Elementary

HOWARD COUNTY

Children's Manor Montessori
Cradlerock School
Deerfield Run Elementary School
Ellicott Mills Middle School
Forest Ridge Elementary
Harper's Choice Middle School
Howard County Public Schools
Jeffers Hill Elementary School
Johns Hopkins Applied
Science Center
Oakland Mills Middle
Pointers Run Elementary School
Running Brook Elementary
The Robert J. DiPietro
Community Center
Thunder Hill Elementary
Triadelphia Ridge Elementary
Wilde Lake Middle School
Worthington Elementary

KENT COUNTY

Galena Elementary School
Henry Highland Garnett Elementary
Kent County Middle School
Kent County Public Library
Chestertown Branch
Kent School
Millington Elementary
Rock Hall Elementary
Upper Chesapeake Summer
Center for the Arts at
Washington College
Worton Elementary

MONTGOMERY COUNTY

Bannockburn Elementary
Bells Mill Elementary
Bethesda Elementary
Bradley Hills Elementary
Briggs Chaney Middle School
Cabin John Middle School
Candlewood ES
Cashell Elementary
Chevy Chase Elementary
Christa McAuliffe Elementary
Clarksburg Elementary
Clearspring Elementary
Doctor Charles R. Drew Elementary
DuFief Elementary
Eastern Middle School
Fallsmead Elementary
Glenallen Elementary
Greencastle Elementary
Kensington/Parkwood Elementary
Lois P. Rockwell Elementary
Maryland Artist Teacher Institute
Mill Creek Parish Pre School
North Chevy Chase Elementary
Our Lady of Lourdes
Pathways School - Springville
Piney Branch Elementary
Rosa Parks Middle

Seven Locks Elementary
Silver Spring International Middle
Stonegate Elementary School
Takoma Park Middle School
The Franklin Schools
Thurgood Marshall
Elementary School
Wayside Elementary
Westbrook Elementary
William Farquhar Middle School
Wood Acres Elementary

PRINCE GEORGE'S COUNTY

Bradbury Heights Elementary
Calverton Elementary
Grand Pacheco
Greenbelt Elementary
Greenbelt Middle School
John Hanson French
Immersion School
Judith Hoyer Montessori
Pathways School - Crossland
Re-entry
Pathways School - Northwood
Prince George's Co Library Bowie
Branch
Prince George's Co Library
Hyattsville Branch
Prince George's Co. Library
Glenarden Branch
Rockledge Elementary
St. Mary's School (Landover Hills)
William Paca Elementary -
Landover

QUEEN ANNE'S COUNTY

Centreville Elementary
Centreville Middle School
Church Hill Elementary
Grasonville Elementary School
Kennard Elementary
Kent Island Elementary
Matapeake Elementary
Queen Anne's County Library
Centreville Branch
Queen Anne's County Library Kent
Island Branch
Stevensville Middle School
Sudlersville Elementary

ST. MARY'S COUNTY

Greenview Knolls Elementary
Hollywood Elementary (St. Mary's)
Mechanicsville Elementary
(Mechanicsvl)
Ridge Elementary

TALBOT COUNTY

The Country School

WASHINGTON COUNTY

Boonsboro Middle School
Eastern Elementary (Hagerstown)
Emma K. Doub Elementary
Fountaindale Elementary

Greenbrier Elementary
Paramount Elementary
Washington County Board
of Education

WASHINGTON D.C.

Blessed Sacrament School
Southern Delaware School of
the Arts

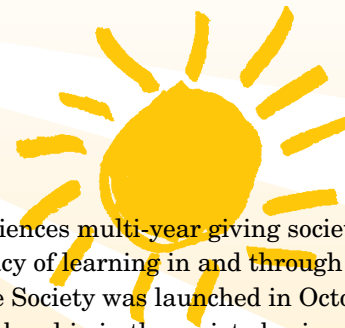
WICOMICO COUNTY

Beaver Run Elementary
Charles H. Chipman Elementary
Delmar Elementary
East Salisbury Elementary
Fruitland Intermediate
Fruitland Primary
Glen Avenue Elementary
Mardela Middle/High School
North Salisbury Elementary
Northwestern Elementary
Pemberton Elementary
Pinehurst Elementary
Pittsville Elementary/
Middle School
Prince Street Elementary
Salisbury Middle School
Ward Museum of Wildfowl Art
West Salisbury Elementary
Westside Intermediate
Westside Primary
Wicomico County Library
Salisbury Branch
Wicomico Middle School
Willards Elementary

WORCESTER COUNTY

Berlin Branch Library
Berlin Intermediate
Buckingham Elementary
Most Blessed Sacrament
Catholic School
Ocean City Branch Library
Ocean Pines Branch Library
Pocomoke Branch Library
Pocomoke Elementary
Pocomoke High School
Pocomoke Middle School
Snow Hill Branch Library
Snow Hill Middle School
Stephen Decatur Senior High
Worcester Preparatory School

SUNBURST SOCIETY



The Sunburst Society is Young Audiences multi-year giving society, which was created to provide a legacy of learning in and through the arts for Maryland students. The Society was launched in October 2010 at our Impact Breakfast. Membership in the society begins with a \$1,000 annual pledge for 5 years. All contributions provide unrestricted operating funds for Young Audiences and allows us to sustain our programming and current outreach as we plan for future growth and strive to achieve our vision that one day every student will have the opportunity to imagine, to create, and to realize their full potential through the arts.

We would like to thank our Sunburst Society members:

FUELING ACHIEVEMENT

Lois and Phillip Macht Family Philanthropic Fund*

CREATING INSPIRATION

Christie and Greg Blake*
Muriel Berkeley
Candice and Bill Buckner*
Ken Davies*
Laura and Chris Doherty*
Cecil and Sheryl Flamer*
Cindy and Scott Johnson*
Jason Kissel and Don Abrams*
Richard and Virginia Patterson
Scott and Terry Peterson*
Eric Pripstein*
Mark Robinson
Jennifer and Michael Sachs*
Stacie Sanders Evans and Ben Evans*
Jerry Schaefer*
Julie and Tom Sessa*
Susan and Mike Stein*

**denotes a founding member who joined in 2010*

**If you would like to join or learn more about the society,
please contact Director of Development Jennifer Andiorio.**

DONORS

GIFTS MADE FROM JULY 1, 2010 – JUNE 30, 2011

\$50,000+

Maryland State Arts Council
 \$25,000 - 49,999
 Baltimore County Commission on Arts & Sciences
 Baltimore Office of Promotion & The Arts
 The Drescher Foundation
 The Jacob and Hilda Blaustein Foundation
 Louis B. II and Josephine L. Kohn Family Foundation, Inc.

\$10,000 - 24,999

Alison Rose Tunis Fund of the Baltimore Community Foundation
 GEICO Philanthropic Foundation
 The Johns Hopkins Neighborhood Fund
 Joseph and Harvey Meyerhoff Family Charitable Funds
 The National Endowment for the Arts
 Mayo and Molly Shattuck
 The Walden Company
 The William G. Baker, Jr. Memorial Fund
 Young Audiences Affiliate Development Fund

\$5,000 - 9,999

Bank of America
 Bill and Candice Buckner
 Constellation Energy Foundation
 The Cupid Foundation
 The Goldsmith Family Foundation, Inc.
 The Helen P. Denit Charitable Trust
 The Henry and Ruth Blaustein Rosenberg Foundation
 Legg Mason
 The Lois and Phillip Macht Family Philanthropic Fund
 Nancy Peery Marriott Foundation, Inc.
 Proceeds from the Sherry Shoot Out
 Sylvan/Laureate Foundation
 Wright Family Foundation

\$1,000 - 4,999

ALLINES Staffing Professionals
 Ayers Saint Gross, Inc.
 Baltimore Community Foundation
 Ben & Esther Rosenbloom Foundation
 Greg and Christie Blake
 Brown Advisory
 Virginia Campbell
 The Campbell Foundation, Inc.
 Coale, Pripstein & Associates
 Tina Crockett*
 CSX
 Ken Davies
 Chris and Laura Doherty
 Dugan, Babij & Tolley, LLC
 Eddie C. & C. Sylvia Brown Family Foundation
 David and Harriet Finkelstein
 Cecil and Sheryl Flamer
 Gordon, Feinblatt, Rothman, Hoffberger and Hollander
 The Harry L. Gladding Foundation, Inc.
 Jack and Joy Heyrman
 Howard Energy, Inc.
 The John J. Leidy Foundation, Inc.
 E. Scott and Cindy Johnson
 Kirkland & Ellis, LLP
 Jason Kissel and Donald Abrams
 Diane Markman
 MetLife Learning for Life
 Neu-Ion, Inc.
 Terry and Scott Peterson in honor of Sue MacDonald
 PNC Bank
 Eric Pripstein
 Mark Robinson
 Rosenberg Martin Greenberg LLP
 The Rotary Club of Columbia
 Patuxent, Inc.
 Michael and Jennifer Sachs
 Stacie Sanders Evans and Ben Evans
 Jerry Schaefer
 The Scott Plank & Dana DiCarlo Family Foundation
 Tom and Julie Sessa
 Sidus Group, LLC
 Eric Siegel
 Michael and Susan Stein
 Susan A. and Paul C. Wolman Jr. Fund
 T. Rowe Price Foundation, Inc.
 Christine and David Wallace
 Wells Fargo

\$250 - 999

Adam and Sheelagh Allston
 The Abraham & Ruth Krieger Family Foundation
 Jennifer Andiorio and Matt Hohner
 Scott Berkowitz and Lesley Farby
 Brightport Managed Solutions
 Brigitte and Donald Manekin Philanthropic Fund
 David and Mona Brown
 Jennifer Carr
 Edmund Coale
 Councilman Bill Cole
 Charles and Peggy Ecker
 Carol Embrey
 Tracey Feild
 Michael and Juli Finkelstein*
 Lara Hall
 Laura Jacobsen
 Patricia Karzai
 Robert and Stephanie Kimmons
 Dr. Julian Krollik
 Lee Financial Associates Inc.
 Victoria Linkous
 Amy Macht and George Grose
 Michael and Lois Mark
 John McLucas
 Order Productions
 Richard and Virginia Patterson*
 Donna Paulson
 Adam and Nina Roa
 Mary Lou Ryce
 Buck Sanders
 Christopher and Ann Shafer
 Mark Steckbeck
 Steven Drake Associates, LLC
 Tanya Washington
 Bobbi Young-Mace and Tim Mace

LESS THAN \$250

Anonymous
 Advance Business Systems
 Sandra Rossello Allen in memory of Stuart R. Wilcox
 Beatrice Ashford
 Avid Technology Professionals, LLC
 Adam and Randi Benesch
 Steven and Laurie Berkowitz
 Jason Berkowitz in honor of Scott Berkowitz
 Michael Berkowitz in honor of Scott Berkowitz
 Colin Bills in honor of Ellie Mitchell
 Robert and Sharan Blohm
 Gary Boardley

Barbara Bonnell
 Lowry Brooks
 Nancy Buckley in memory of Sylvia Pripstein
 Jennifer Burdick
 Ruth Bush in memory of Sylvia Pripstein
 Chris and Jean Calambro
 Eileen Carson
 John Ceschini
 David Clewell
 Amy Cohn
 Pam Connolly
 Stephen and Adele Considine
 Mary Rose Cook
 Rebecca Cornelius
 Linda Cox
 Gayle Danley
 John Deal and Barbara de Beaufort
 Richard and Kathleen Deasy
 Andrew Defilippis in honor of Scott Berkowitz
 Zeyn Desai
 Lois Devoe
 Dr. Frank C. Marino Foundation
 Pamela Dunne
 Bradley Dunnells
 Jane Dyer
 Sonya Epstein
 Cynthia Ernst
 JoAnn Escobosa
 Rich Espey
 Linda Fang
 Dr. Charlotte Ferencz
 Delores Ford
 Sally Foster
 Andrew Frank and Mark Benson in honor of Paula Frank
 Eleanor Fried
 Louis Friedman
 Richard Gaige
 Liz Galuardi
 Maritha Gay
 Elisha Gilliam
 Dr. Phillip and Sharon Goldstein
 Edward Goldstein
 Amy Goodwin
 Irvin and Nanette Greif
 Laura Groo
 The Rev. Dr. Alison Halsey
 William and Erin Hankins
 Aaron Heinsman
 Douglas and Annie Herbert
 Sue Hess
 Sabrina Hocker
 Emilie Hodgkin
 Aaron Horne
 David and Harriet Hutzler
 Gary Hyman
 Jerry and Elise Janofsky
 Janet Jeffein
 Mark and Teresa Jeschke
 Glenda Johnson

Jeanie Jung
 Sachin Kalyani
 Ron Kaplan
 Leonard Kaplan
 Ken and Jeannette Karpay
 Daniel Katz
 Ann Kennedy
 Delores Klein
 Steven Klepper
 Rupa Krishnaswamy
 Paul Lee
 Jennifer Lee
 Marilyn Lee
 Richard Lehmann
 Ruth Levine
 Dan and Nancy Long
 Norma Long and Jan Carver
 Patricia Lowe-Gould
 Diane Macklin
 Stanford Malinow
 Mary Marcum
 Diana Mark
 Allegra Marquart
 Matthew Martin
 Sheryl May
 Pia May
 Hugh McCarthy
 Marrian McCormick
 Ann McIntosh
 Aliya McLendon
 Cecilia Meisner
 William and Laurie Michael
 Milkshake Music
 Karen Miller
 Justin Milner
 Searle and Deborah Mitnick
 James and Gloria Murphy
 Daniel and Joanne Nathans
 Andrew Norden in honor of Scott Berkowitz
 Eileen O'Brien
 Tom and Sue Owens
 Carol Palanker
 Sandra Patterson in memory of Sylvia Pripstein
 Anne Perkins
 Andrew Peters
 Samuel and Ann Pettijohn
 Joyce Phillip
 Greg Pilewski
 Marion Pines
 Andy and Ann Powell
 Zachary Price
 Sylvia Pripstein
 Irwin Pripstein in memory of Sylvia Pripstein
 Alvin Ramsey
 Elliott Rauh
 Ken Rice
 William Richards
 Lawrence and Sandra Rinck
 JoAnn Robinson

Lee and Beverly Rosenblatt in memory of Sylvia Pripstein
 J. Wynn Rousuck and Alan Fink
 Michael Sarbanes
 Sedica Sawez and Kurt Van Ryzin
 Cara Schaefer
 Dave Scher
 Steph Schreckinger
 Betty Schroll
 William Shaughnessy
 David Simon
 Ellwood and Thelma Sinsky
 Karen Sitnick
 Lori Snyder
 Dr. Clifford and Bernadette Solomon
 Dr. Neil and Frema Solomon in memory of Sylvia Pripstein
 J.P. Somersalter
 Annie Spain
 Councilwoman Rikki Spector
 Donna Stark
 David Stern
 Renee Suttner in memory of Sylvia Pripstein
 Kavita Thakrar
 Jay Tucker
 Felicity Turner
 Spencer and Denise Vaughan
 Randi Vega
 Scott and Jean Vieth
 Thiru Vignarajah and Rakhi Naik
 Shelley Wahlgren
 Virginia Patterson Walczak
 Michele Walsh
 Lauren Webb and Brennan Tolstoi
 Janice Webber
 Janet Williams
 Beverly Winter
 Tammy Winters
 Young Audiences, Inc.
 John Zesiger

*Includes a gift made in memory of Sylvia Pripstein

MATCHING GIFTS FROM COMPANIES & FOUNDATIONS

The Jacob and Hilda Blaustein Foundation
 The Annie E. Casey Foundation
 PNC Bank
 T. Rowe Price