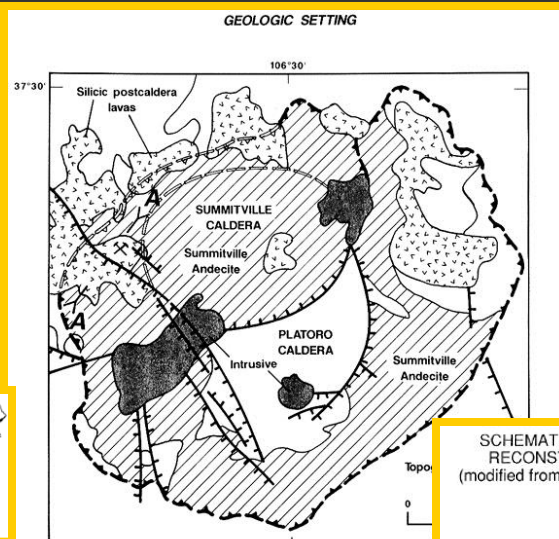
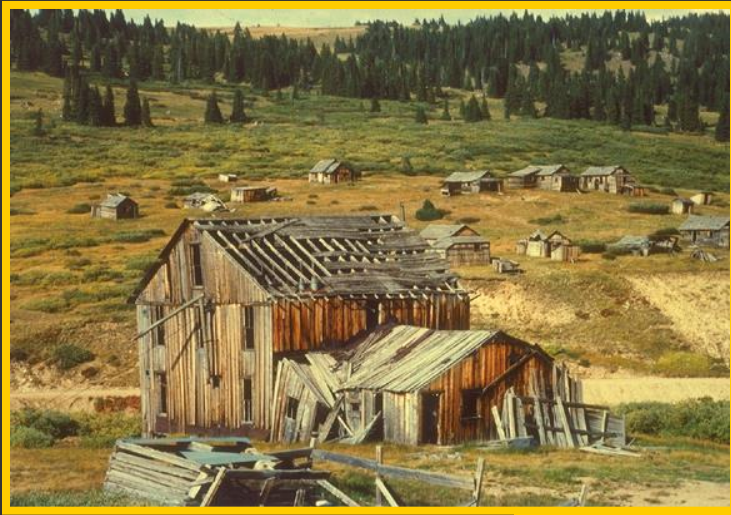


# SUMMITVILLE, COLORADO

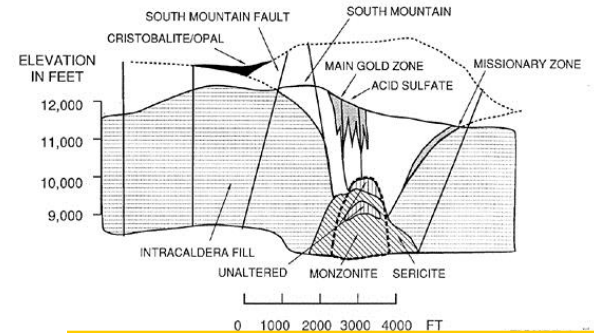


## HIGH SULFIDATION SYSTEM

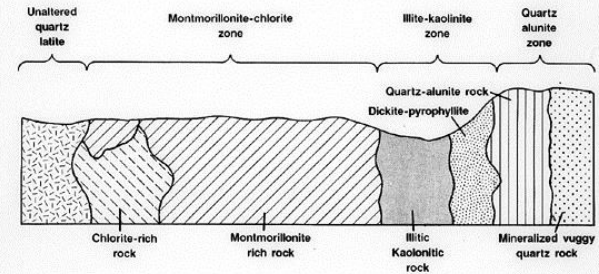
### CLASSIC ZONING

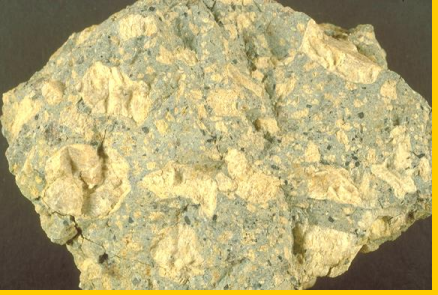


SCHMATIC CROSS SECTION - SUMMITVILLE DISTRICT SHOWING RECONSTRUCTED TOPOGRAPHY AT TIME OF MINERALIZATION (modified from Steven and Ratte, 1960; Enders and Coolbaugh, 1987 with post mineralization fault displacement removed)



The intense acid leaching that occurred at Summitville produced a distinctive advanced argillic alteration suite. This figure summarizes the alteration envelopes seen consistently in the mine illustrating the progressively less acid environment that develops away from the veins. (Modified from Stoffregen, 1987)

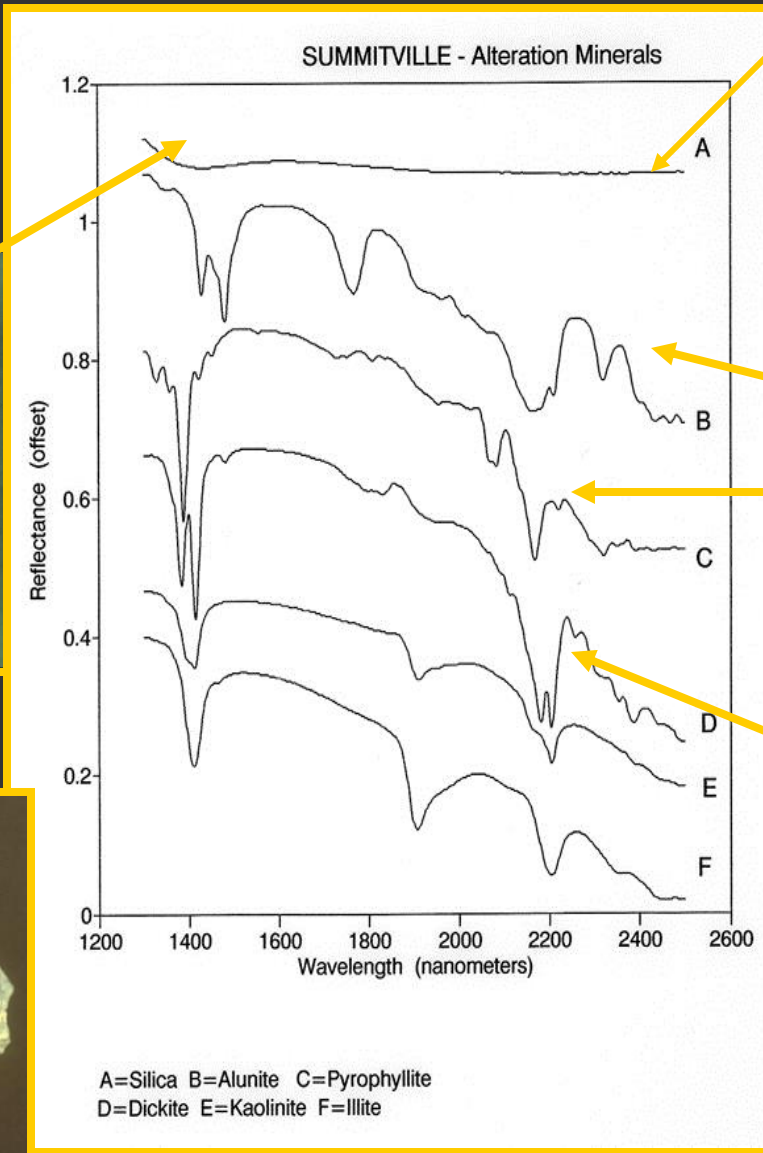




**FRESH  
ROCK**



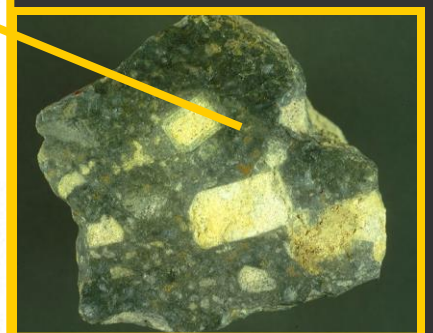
**SILICA  
VEIN  
CENTER**



**COVELLITE**

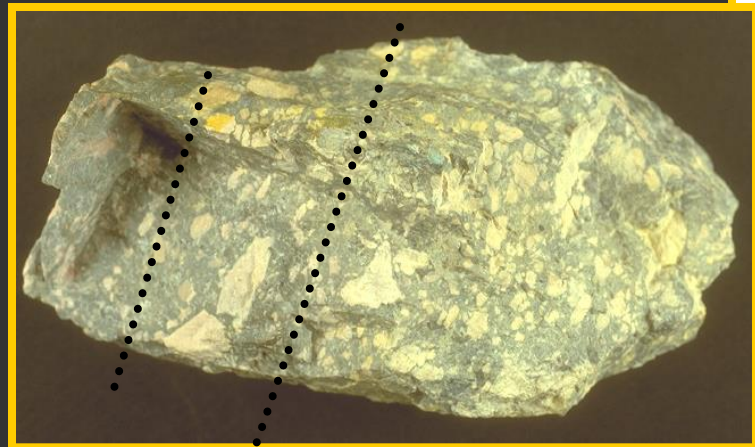


**ALUNITE, PYROPHYLLITE**



**DICKITE**

VQ QA QAP APD D K



**VEIN CROSS SECTION**



P.O. BOX 1027, ARVADA, CO. 80005  
303 403 8383.....PUSA@RMI.NET  
www.spectral-international.com